

Temporary Road Closure

WHERE ? Braehead Road, Kirkcaldy (from Jct. Duddingston Drive for whole length).

Access for emergency service vehicles will be maintained.

No Access for residents vehicles between 8am to 4.30pm

Pedestrian access will be maintained.

WHEN ? Daily from 8am to 4.30pm Wednesday 12th February 2025 to Friday 14th February 2025.

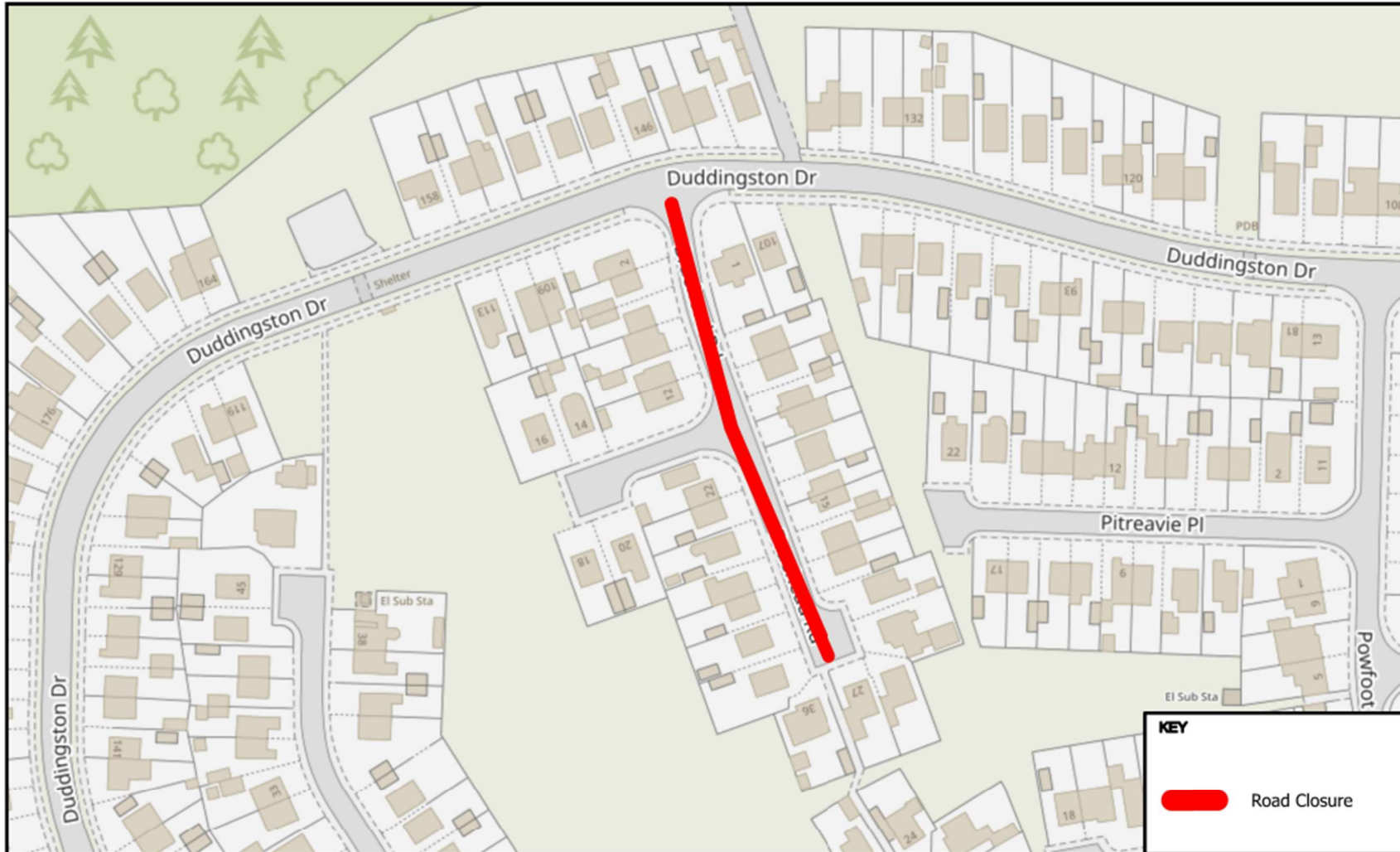
WHY ? To allow carriageway excavation works to be carried out in safety.

WHO ? Fife Council Roads and Transportation Services are responsible for these works and can be contacted as follows:

Project Engineer: 03451 55 55 55 Ext 493669

Emergency/Out of Hours: 03451 55 00 99






KEY

 Road Closure

© Crown copyright and database rights 2025.
 Ordnance Survey 100023385
 Aerial Photography © copyright Getmapping.

N

 Scale: 1:1,307

Braehead Road, Kirkcaldy..

Prepared By: BL
 Service: Roads & Transportation



**The Road Traffic (Temporary Restrictions)
Procedure Regulations 1992**

