

KELTY



LOCAL PLACE PLAN 2024



CONTENTS

2

- 3 FOREWORD
- 4 INTRODUCTION
- 5 OUR COMMUNITY NOW INCLUDING LPP BOUNDARY MAP
- 10 COMMUNITY CONSULTATION
- 11 PICTURE MY PLACE - RESULTS OF THE PLACE STANDARD
- 12 KELTY LOCAL PLACE PLAN
- 13 THE FOURTH NATIONAL PLANNING FRAMEWORK (NPF4)
- 14 SUSTAINABLE AND PRODUCTIVE PLACES
- 16 LIVEABLE PLACES
- 18 PROPOSITIONS FOR CONSIDERATION IN THE FIFE LOCAL DEVELOPMENT PLAN
- 20 NPF4 AND THE PLAN4FIFE LINK TO COMMUNITY ASPIRATIONS
- 22 PLACE AND WELLBEING OUTCOMES

THEMES AND PRIORITIES FOR COMMUNITY ACTION:

- 23 THEME 1 | MOVEMENT
- 24 THEME 2 | SPACES
- 25 THEME 3 | RESOURCES
- 27 THEME 4 | CIVIC
- 28 THEME 5 | STEWARDSHIP
- 29 OUR COMMUNITY VISION
- 30 MAKING THE LINKS TO THE PLAN 4 FIFE
- 31 MONITORING, REVIEW AND RE-SETTING
- 32 APPENDIX
- 36 MAKING IT HAPPEN



We are pleased to present one of the first Local Place Plans to be prepared in Fife. This is the outcome of hard work and commitment by the Kelty Community Council alongside their community and all those with an interest in the future of Kelty.

The Kelty Local Place Plan has been prepared by following the outcomes of the consultation and workshops that took place during 2021-23, supported by the Coalfields Regeneration Trust (CRT).

The CRT Place Standard Toolkit and Virtual Engagement Room allowed us to reach out to the local community and has been a key driver behind the content of this work.

We have worked closely with the Fourth National Planning Framework (NPF4) and used it as our guide when framing our Local Place Plan.

Thanks goes to Green Map System for their support in providing their resources to help us make the spatial mapping as accessible as possible using icons to identify policy and place.

To help achieve this, the Kelty Local Place Plan sets out a future vision for how our communities could be improved and the actions required to help achieve this.

The local community have also identified community action priorities that they want to see happen. These are set out under the five themes of the Improvement Service 'Place and Wellbeing Outcomes' designed to improve Scotland's wellbeing and reduce inequality.

The community working together has been the key to success so far and continues to act as a benchmark for future engagement in planning and community planning in Kelty.

INTRODUCTION

4



“ Whatever the problem, community is the answer. MARGARET WHEATLEY

CRT Place is a place based approach to support the regeneration and creation of sustainable and resilient communities in Scotland’s former coal mining communities. We are using a range of methods to capture people’s views of where they live, as it is now and how they see the future in their local community.

This approach promotes dialogue and cooperation between community members, partners and outside agencies. Any type of community led plan is always a work in progress, however it provides concrete steps to help shape local communities going forward. The aim of this is that future generations can thrive in changing times so that no one is left behind.

Background

Kelty community members produced the first Kelty Community Action Plan that ran from 2016-2021 with support from Coalfields Regeneration Trust. Due to the effects of the Covid pandemic it’s been a slow journey to be able to review the plan,

but the Kelty Steering Group have been working with CRT throughout to organise a community wide engagement, with the aim of producing a new Kelty Local Place Plan designed to deliver the spatial vision and community action priorities for the district.

The Steering group, during the process of creating this local place plan, drew support from members of Kelty Community Council.



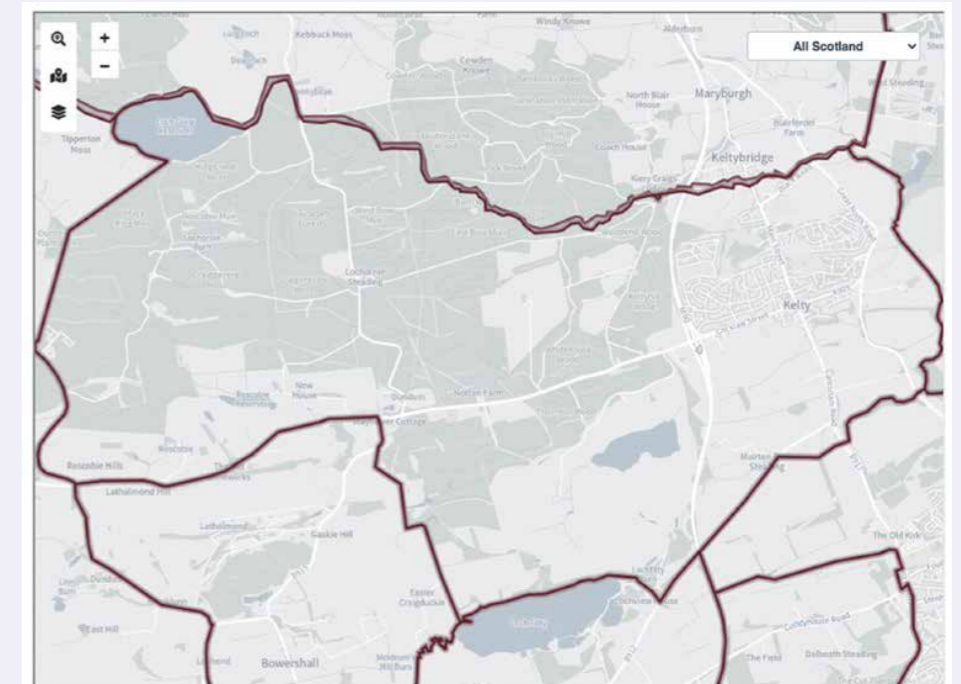
5

OUR COMMUNITY NOW



Location

Kelty is a town located in Fife, Scotland. It is situated in the heart of Fife, approximately 4 miles (6.4 kilometers) southeast of the town of Cowdenbeath and around 18 miles (29 kilometers) north of the city of Edinburgh. Kelty lies between the villages of Cowdenbeath and Kinross, near the boundary with Perth and Kinross. It is part of the parish of Beath and is known for its mining heritage.



Kelty Community Council Boundary and is also the boundary for the Local Place Plan

Source: <https://www.communitycouncils.scot/>



Population

Kelty is a village with a diverse population and has a total population of

6,899

residents as of 2021.

Source: <https://know.fife.scot/>

The male population is **3,405**, while the female population is **3,494**.

Children (0-15 years) account for **1,360**, working-age individuals (16-64 years) are **4,216**, and older adults (65+ years) make up **1,323** of the population.

The percentage breakdown



Housing

The housing market in Kelty offers a range of options, including detached houses, semi-detached houses, flats, and apartments.

3,356

Total households in Kelty 2022

Source: <https://know.fife.scot/>

Housing tenure:

- Owner/occupier: **58.0%**
- Private rented: **6.5%**
- Social rented: **33.7%1**

Poverty and Deprivation:

- Child poverty (15 and under) in relative poverty: **17.8%**
- Working-age employment deprived: **12.1%**
- Total population income deprived: **15.6%**

Education and Skills

The % of households where residents aged 16-74 have no qualifications is **32.5%** which is above the Scotland average of **26.8%**. In relation to those with Level 4+ (degree) qualifications, Kelty is significantly lower at **14.9%** than Scotland as a whole at **26.1%**. Source Census 2011

Currently there are several primary schools: Kelty Primary School and St. Joseph's RC Primary School. High school students attend Beath High School in Cowdenbeath or St Columba's secondary school in Dunfermline.

Fife College in Dunfermline can offer a wide range of courses for students going on to further education with over 40 specialist areas of skills development.

Kelty Health and Care

The average age of people with good health or people with a limiting long term illness is higher than Scotland as a whole with **23.7%** of residents living with a limiting long term illness (Scotland



figures **19.6%**). Health and other services are accessed from the local health clinic in the Main Street. Waiting times are an issue for some. Source *Census 2011*.

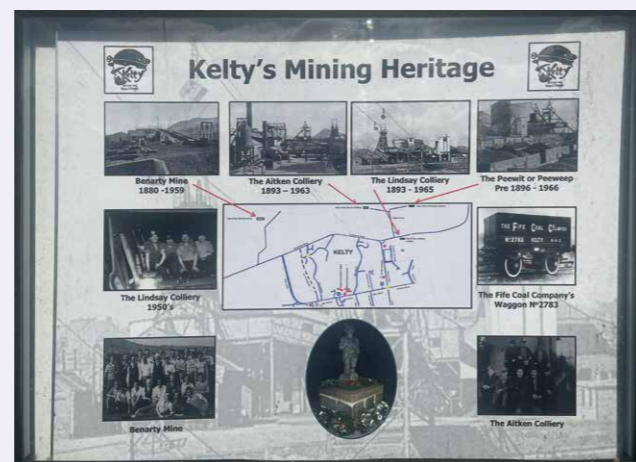
Work and Local Economy

Kelty's economy is diverse, with residents engaged in various sectors such as manufacturing, retail, healthcare, and services. Local businesses play a crucial role in providing employment opportunities and contributing to the economic growth of the village.

More people are economically active (**68%**) than inactive (32%) and of these less are self-employed (**4.7%**) compared to Scotland as a whole (**7.5%**) In Kelty, the job breakdown shows that 41% are full time employees with **13.5%** in part time work. Source *Census 2011*

Heritage

Kelty's industrial heritage was centred on coal mining. It was the village's economic backbone, providing jobs, shaping its identity and fueling its economic growth. Although the industry has faded, its legacy endures in the collective memory of residents and lives on in the local traditions. The Kelty coal race being a first class example of how the legacy lives on.



Social and Community

Kelty is a close-knit community with strong social ties among residents. Community events, clubs, and organizations contribute to the vibrant social life of the village.

Kelty has 2 churches including **St. Josephs** and **Kelty Parish Church**.

Kelty Community Centre on the Main Street hosts a number of facilities and services including:

Assembly hall, Astro 11's, Astro 7's, Astro 5's, Book lending, Foodbank/pantry, Housing service, Public access computers, Youth Clubs and Youth Room.

Among activities available at the centre: kids birthday parties, indoor sports activities / events, educational and leisure activities, dance classes, martial arts classes, youth clubs, out of school clubs, art group, and social clubs.

Other local community groups include:

- Kelty Community Council
- Kelty Hearts Community Club
- Kelty Art Group
- Kelty and Blairadam Allotment Association
- Kelty Community Library
- Kelty Community Cinema
- Kelty and District Loving Hands
- Kelty Gala Committee
- Kelty Street Art Collective – K-Art
- Kelty Scouts
- Kelty Ex-Service Mens Club
- Kelty Masonic Lodge
- Kelty Primary School PTA
- St Joseph's Primary School PTA
- Oor Wee Café based in Community centre
- Scottish Coal Carrying Champoinships
- Kelty and Blairadam Concert Band





I wish there were more small independent shops

I wish there were speed bumps to stop boy racers.

I wish there were more activities for both youth and seniors.

I wish I was more aware of what's going on locally

I wish we had somewhere to have a meal in the evening/ weekend

Gathering Everyone's Views

A series of community engagement events and online surveys over the last year has enabled us to gather people's views to help inform this action plan.

Consultations included:

- The Community Centre hosted a Place Standard assessment session and an evening mapping workshop hosted by Kelty Community Council, facilitated by Coalfields Regeneration Trust.
- The Masonic Lodge hosted a Community Voting event and mapping workshop.
- Kelty 3 Wishes Campaign - the 3 Wishes campaign took the form of a postcard and an on-line survey option as well as being available at local events.

119 postcards completed making 357 wishes for a better place to live

The 3 Wishes campaign highlighted the community's aspirations around improvements relating to infrastructure, amenities, activities, and recreational opportunities, as well as community safety and helped inform the community priorities for action section of this plan.

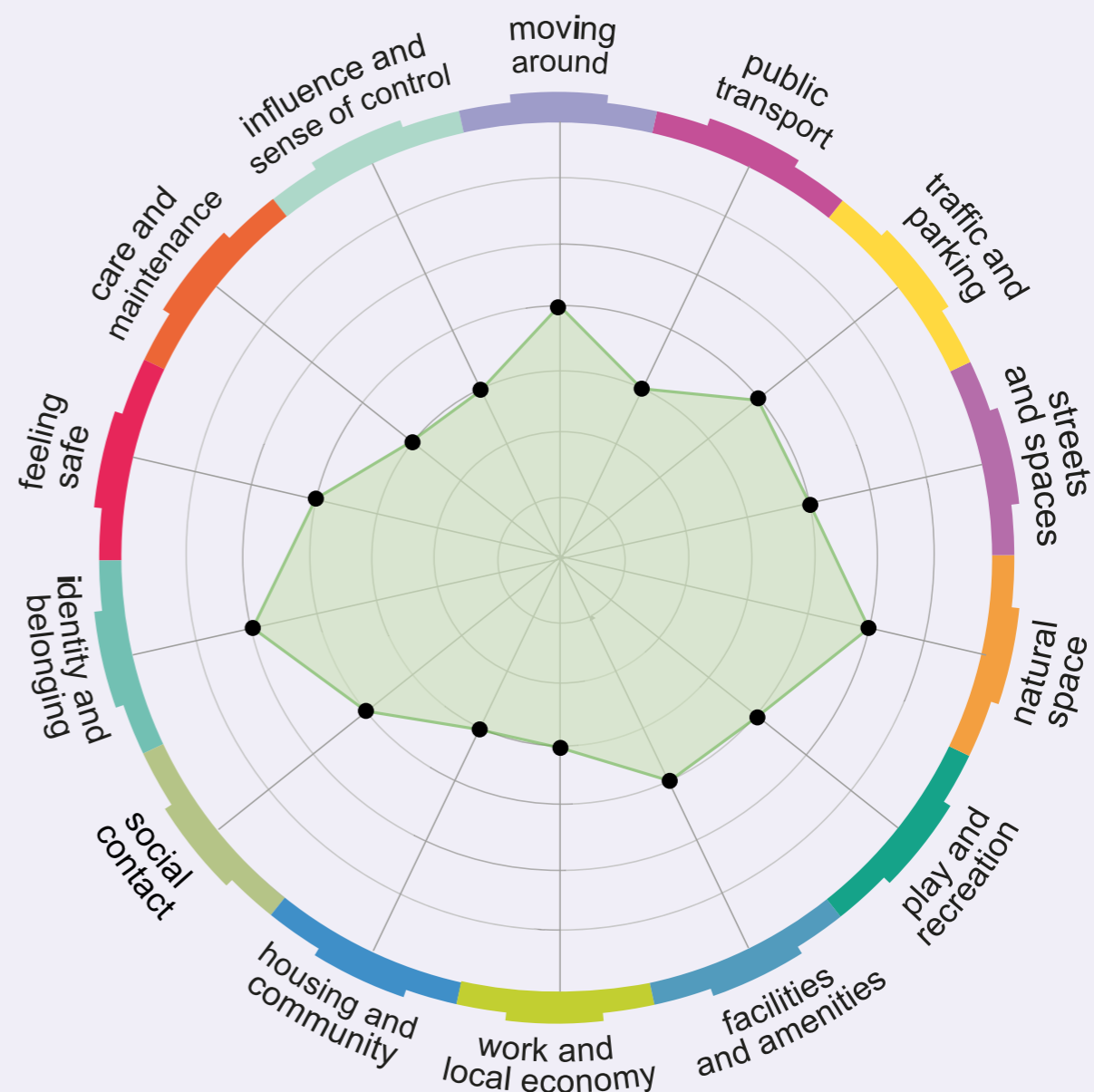
Results of the Place Standard Assessment

Community Engagement Using the Place Standard Assessment Tool

Consultations were hosted as part of attending the Gala in June 2022, attending the Coal Race in August 2022, a mapping event in October in the Community Centre 2022 and a Community Gathering in February 2023.

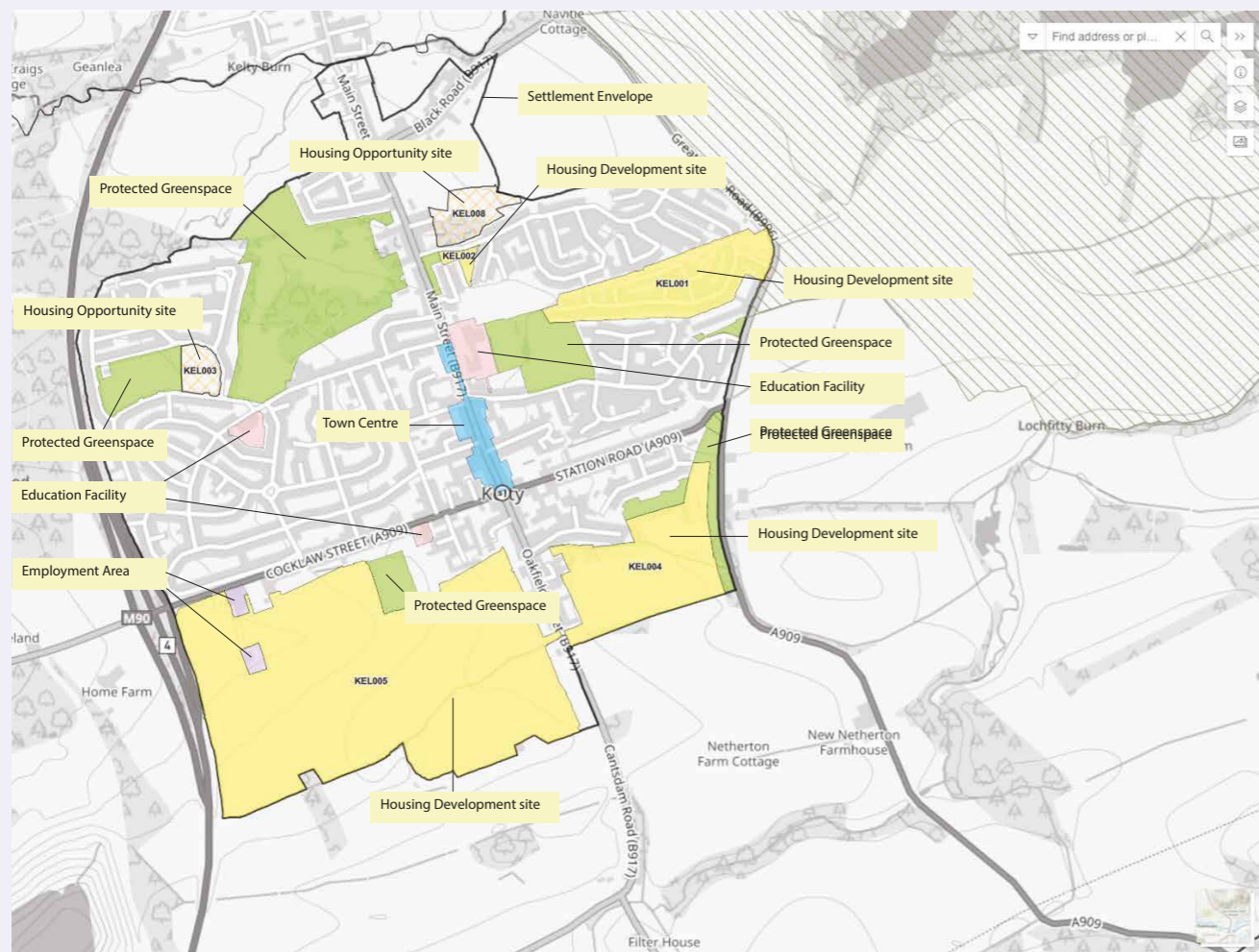
55 Place Standard Assessments were completed

The graph shows the strong and the weak areas, the higher the score plotted the better the service or provision. This gives a good indicator of where improvements need to be made.



Throughout the Local Place Plan development and consultation phases regard was made to the following plans and policies:

- Fife Local Development Plan 2017 Local development plan (FIFEplan) | Fife Council
- Local Outcome Improvement Plan for Fife 2017-2027 A Plan for Fife | Our Fife - Creating a successful, confident and fairer Fife
- Kelty Community Action Plan 2016 - 2021
- The Fourth National Planning Framework (NPF4) was consulted throughout the same period. <https://www.gov.scot/publications/national-planning-framework-4/>



Map showing 2017 Local Development Plan - Kelty area

KELTY LOCAL PLACE PLAN GIVES REGARD TO NATIONAL PLANNING FRAMEWORK 4

“ The world is changing, and so are Scotland’s places. This strategy sets out how we will work together in the coming years to improve people’s lives by making sustainable, liveable and productive places. This will play a key role in delivering on the United Nations Sustainable Development Goals, as well as our national outcomes. We have substantially re-worked the Framework’s ‘National Spatial Strategy’, which sets out how our approach to planning and development will help achieve a net zero, sustainable Scotland by 2045.”

STATEMENT BY MINISTER FOR PUBLIC FINANCE, PLANNING AND COMMUNITY WEALTH TOM ARTHUR ON THE FOURTH NATIONAL PLANNING FRAMEWORK (NPF4) ON 8TH NOVEMBER 2022

CRT Local Place Plan Maps use icons to represent NPF4 policies

CRT helps fulfil a requirement of Local Place Plans to show the links between local propositions and the Fourth National Planning Framework.

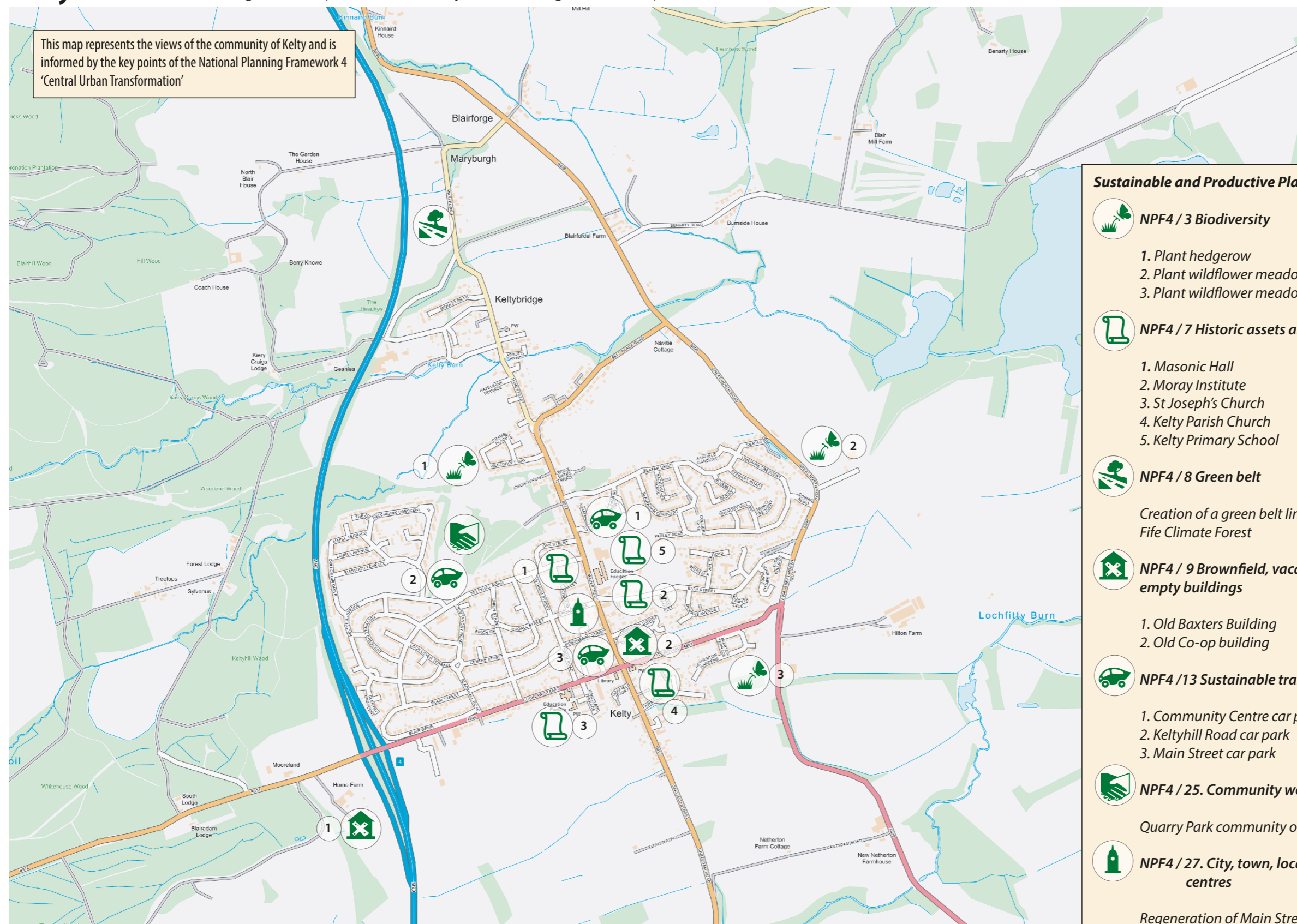
Map themes are in line with NPF4 and include Sustainable, Productive & Liveable.



Kelty How to read the icons e.g. NPF4/2 represents NPF4 Policy 2 Climate Mitigation and Adaptation

Sustainable and Productive Places

This map represents the views of the community of Kelty and is informed by the key points of the National Planning Framework 4 'Central Urban Transformation'



Sustainable and Productive Places

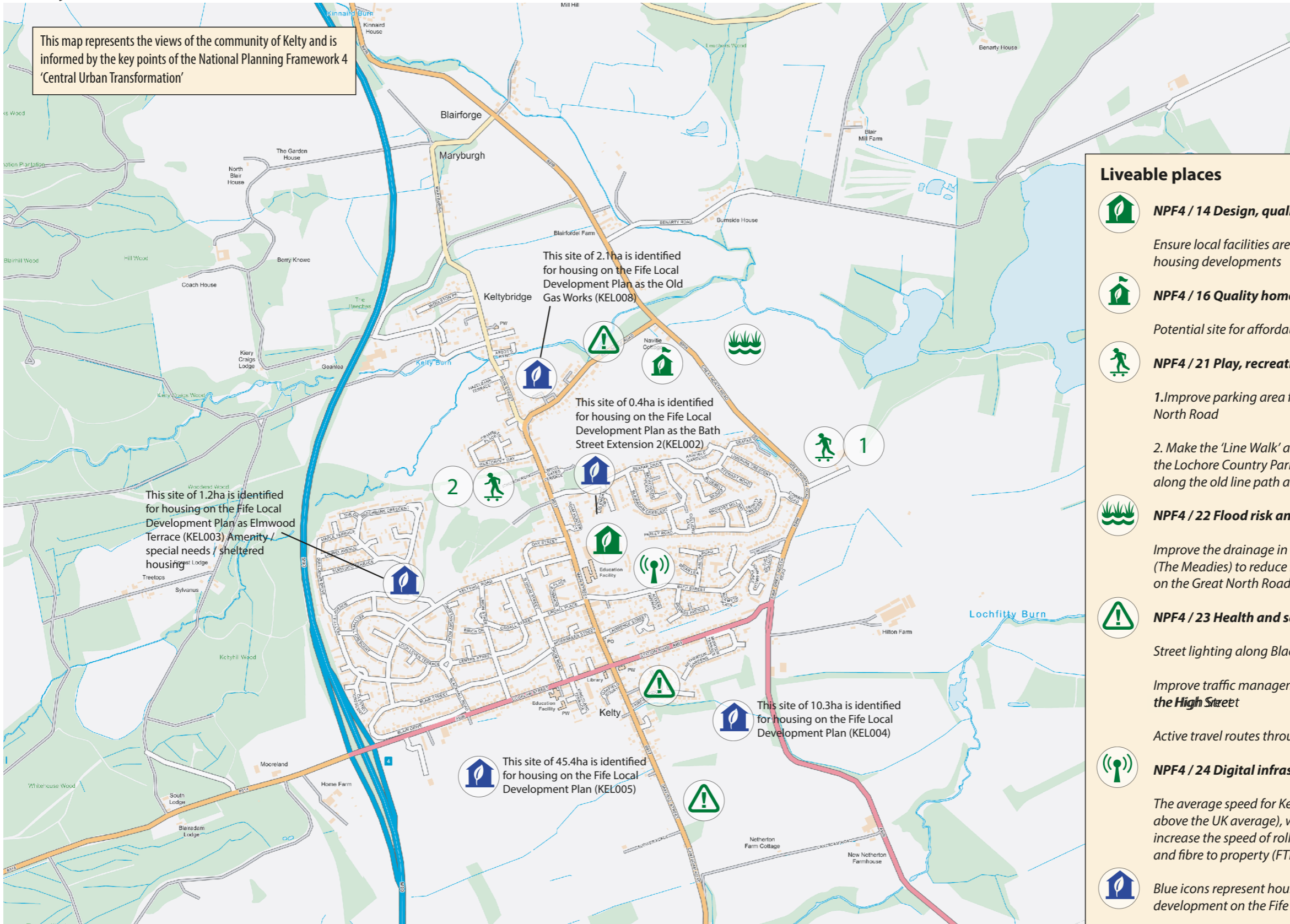
-  **NPF4 / 3 Biodiversity**
 1. Plant hedgerow
 2. Plant wildflower meadow
 3. Plant wildflower meadow at top end of park
-  **NPF4 / 7 Historic assets and places**
 1. Masonic Hall
 2. Moray Institute
 3. St Joseph's Church
 4. Kelty Parish Church
 5. Kelty Primary School
-  **NPF4 / 8 Green belt**

Creation of a green belt linked to the Fife Climate Forest
-  **NPF4 / 9 Brownfield, vacant, derelict land and empty buildings**
 1. Old Baxters Building
 2. Old Co-op building
-  **NPF4 / 13 Sustainable transport**
 1. Community Centre car park
 2. Keltyhill Road car park
 3. Main Street car park
-  **NPF4 / 25. Community wealth building**

Quarry Park community orchard
-  **NPF4 / 27. City, town, local and commercial centres**

Regeneration of Main Street

Kelty



Liveable Places

Liveable places

- NPF4 / 14 Design, quality and place**
 Ensure local facilities are adequate to support new housing developments
- NPF4 / 16 Quality homes**
 Potential site for affordable social housing
- NPF4 / 21 Play, recreation and sport**
 1. Improve parking area for the Meadies at Great North Road
 2. Make the 'Line Walk' a multi user path to connect the Lochore Country Park (The Meadies) to Blairadam along the old line path and the Iron Bridge
- NPF4 / 22 Flood risk and water management**
 Improve the drainage in the Lochore Country Park (The Meadies) to reduce flooding and surface water on the Great North Road
- NPF4 / 23 Health and safety**
 - Street lighting along Black Road
 - Improve traffic management at the Crossroads and the High Street
 - Active travel routes through the town
- NPF4 / 24 Digital infrastructure**
 The average speed for Kelty is 102.68 Mbps (7.2% above the UK average), work with providers to increase the speed of rollout of fibre to cabinet (FTC) and fibre to property (FTP)
- Blue icons represent housing sites identified for development on the Fife Local Development Plan

PROPOSITIONS FOR CONSIDERATION IN THE FIFE LOCAL DEVELOPMENT PLAN INCLUDING LINKS TO NPF4 POLICIES

18



19



The following propositions relate to the Local Place Plan Maps: Sustainable and Productive Places, Liveable Places

NPF4 / 3 BIODIVERSITY

1. Plant a hedgerow between the farmer's field and the bottom park to create a wildlife corridor.
2. Kelty is situated between Blairadam Forest and Lochore Meadows Country Park (The Meadies), access to the Meadies from The Great North Road is poor with limited car parking. The parking area should be extended and improved, with the surrounding area landscaped for a wild flower meadow to improve biodiversity.
3. Plant a wildflower meadow at the top end of the park.

NPF4 / 7 HISTORIC ASSETS AND PLACES

The Community Council would like to reference the following buildings and sites as historic assets of Kelty:

1. The Masonic Hall, Main Street
2. Moray Institute, Main Street
3. St Joseph's Church, Cocklaw Street
4. Kelty Parish Church
5. Kelty Primary School

NPF4 / 8 PRESERVE THE GREEN BELT

The Community Council recommends the creation of a green belt, linked to the Fife Climate Forest, that supports the protection and preservation of protected green space within and surrounding Kelty.

NPF4 / 9 BROWNFIELD, VACANT, DERELICT LAND AND EMPTY BUILDINGS

The Community Council would like to reference the following buildings and sites for potential community use:

1. Old Baxters building – B914
2. The Old Co-op building – Main Street

NPF4 / 13 SUSTAINABLE TRANSPORT

Public e-charging points should be installed at:

1. Community Centre car park.
2. Keltyhill Road car park
3. Main Street car park

We support any plans for active travel routes through the town.

NPF4 / 14 DESIGN, QUALITY AND PLACE

There are 5 areas indicated on the Fife Council Local Development Plan for housing development (KEL001, 002, 003, 004, 005, 008) totalling, in excess of, 55 hectares (136 acres). The Council must ensure that all local facilities and services are adequate to support the social and environmental impact of these developments.

NPF4 / 21 PLAY, RECREATION AND SPORT

1. Improve parking for the Lochore Meadows Country Park (The Meadies) at Great North Road (see NPF4 / 3).
2. Make the 'Line Walk' a multi user path to connect Kelty to Lochore Meadows Country Park and Blairadam Forest via the Iron Bridge (see map P21).

NPF4 / 22 FLOOD RISK AND WATER MANAGEMENT

Improve the drainage in the Lochore Meadows Country Park (The Meadies) to reduce flooding and surface water on the Great North Road.

NPF4 / 23 Health and Safety

Install street lighting along Black Road.

Improve traffic management at the crossroads with Main Street.

NPF4 / 24 DIGITAL INFRASTRUCTURE

The average speed for Kelty is 102.68 Mbps (7.2% above the UK average), work with providers to increase the speed of rollout of fibre to cabinet (FTC) and fibre to property (FTP).

NPF4 / 25 COMMUNITY WEALTH BUILDING

Creation of a Community Orchard at Quarry Park.

NPF4 / 27 CITY, TOWN, LOCAL AND COMMERCIAL CENTRES

Regeneration of Main Street:

1. No more take-away food shops
2. Improve signage
3. Improve parking

NPF4 AND THE PLAN4FIFE LINK TO COMMUNITY ASPIRATIONS

These propositions can be linked to NPF4 and to the Plan4Fife strategy as follows:

1. NPF4 / 3 BIODIVERSITY

Improving access to Lochore Meadows Country Park and enhancing biodiversity aligns with Plan4Fife's goals of promoting sustainable development and enhancing natural assets.

2. NPF4 / 7 HISTORIC ASSETS AND PLACES

Identifying historic assets and places in Kelty reflects Plan4Fife's emphasis on preserving cultural heritage and promoting community identity.

3. NPF4 / 8 PRESERVE THE GREEN BELT

Identifying sites for preservation aligns with Plan4Fife's goal of protecting green spaces and ensuring sustainable development patterns.

4. NPF4 / 9 BROWNFIELD, VACANT, DERELICT LAND AND EMPTY BUILDINGS

Identifying brownfield sites for potential community use supports Plan4Fife's objectives of promoting brownfield redevelopment and revitalising communities.

5. NPF4 / 13 SUSTAINABLE TRANSPORT

Supporting sustainable transport initiatives and improving infrastructure aligns with Plan4Fife's goals of promoting active travel and reducing carbon emissions.

6. NPF4 / 14 DESIGN, QUALITY AND PLACE

Ensuring that housing developments are accompanied by adequate local facilities and services reflects Plan4Fife's emphasis on creating well-designed and sustainable communities.

7. NPF4 / 16 QUALITY HOMES

Identifying sites for affordable housing supports Plan4Fife's objectives of promoting inclusive development and providing housing options for all residents.

8. NPF4 / 21 PLAY, RECREATION AND SPORT

Improving access to recreation areas and creating multi-user paths aligns with Plan4Fife's goals of promoting active lifestyles and enhancing community well-being.

9. NPF4 / 22 FLOOD RISK AND WATER MANAGEMENT

Implementing measures to improve drainage and reduce flooding supports Plan4Fife's objectives of promoting climate resilience and sustainable water management.

10. NPF4 / 23 HEALTH AND SAFETY

Installing street lighting and improving traffic management align with Plan4Fife's goals of enhancing safety and creating inclusive communities.

11. NPF4 / 24 DIGITAL INFRASTRUCTURE:

Improving digital infrastructure and increasing broadband speed supports Plan4Fife's objectives of promoting connectivity and digital inclusion.

12. NPF4 / 25 COMMUNITY WEALTH BUILDING

Identifying sites for community use, such as allotments and community orchards, aligns with Plan4Fife's goals of promoting community empowerment and economic resilience.

13. NPF4 / 27 CITY, TOWN, LOCAL AND COMMERCIAL CENTRES

Regenerating local centres and improving signage and parking align with Plan4Fife's objectives of promoting vibrant and accessible town centres

1. Improve parking for the Lochore Meadows Country Park(The Meadies) at Great North Road (see NPF4 / 3)
2. Make the 'Line Walk' a multi user path to connect Kelty to Lochore Meadows Country Park and Blairadam Forest via the Iron Bridge.



Kelty 'Line Path' made into a multi user path to connect Lochore Meadows to Blairadam Forest



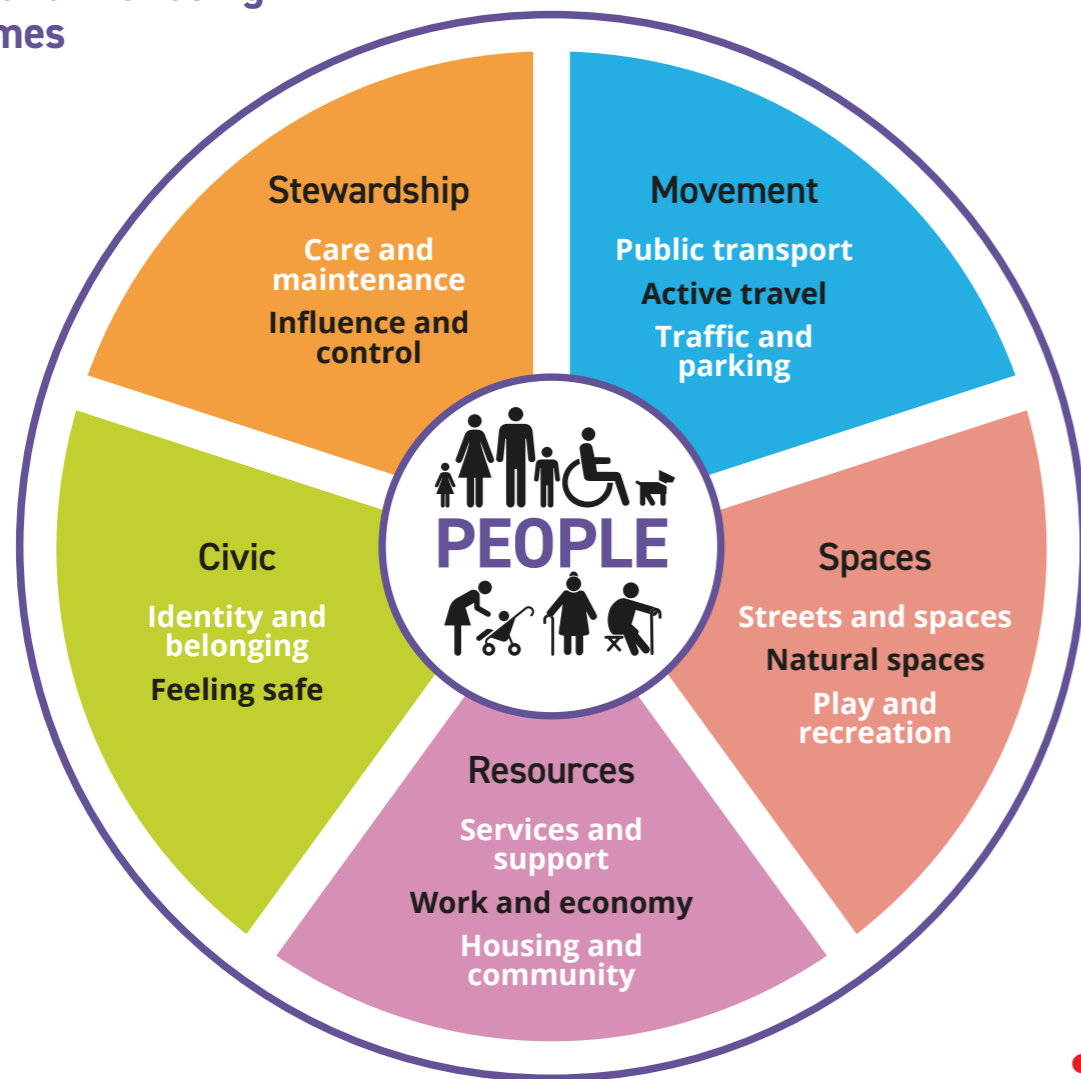
Setting out the priorities for community action

In January 2023 we hosted a Community Gathering so people could review all the findings and vote on what to make action on. The priorities for action that have been identified are set out under the Place and Wellbeing outcomes based on the Place Standard themes.

These themes are all the characteristics of a place that allow those who live, work and relax there to thrive.

The outcomes are for all stakeholders to take collaborative action on delivering in Kelty.

Place and Wellbeing outcomes



The principles of equality, net-zero emissions and sustainability underpin all of these themes, and all themes should be embedded in policy and action.

This theme highlights the priorities that emerged from community feedback and relate to aspects of your place that include moving around, public transport and traffic and parking.

PRIORITIES

IMPROVE BUS SERVICE



IMPROVE TRAFFIC MANAGEMENT



IMPROVE INFRASTRUCTURE FOR WALKERS AND CYCLISTS



IMPROVE PARKING FACILITIES



POTENTIAL PARTNERS

ACTIONS AND POTENTIAL PARTNERS

Continue to lobby for improved bus services locally.
Work with public transport providers (e.g Stagecoach) to explore options for improved services that meet the needs of the community including:

- Better bus scheduling
- Improve transport links
- An improved bus timetable

Explore community transport options such as Dial-a-Bus and Buzz Bus.

Work with Fife Council to carry out a mapping exercise of where traffic calming is most needed.
Work with Fife Council Roads Department and Community Police on measures to reduce traffic speed.
Improve pedestrian crossings throughout the village.
Work with local Primary Schools to launch campaigns and to reduce reliance on cars to get to school and overall road safety issues.
Undertake community "speedwatch" campaigns in areas of concern e.g. Station Road and North Road.
Carry out a mapping exercise to identify potholes and road repair sites. Liaise with Council to have priority repairs made.

Carry out a mapping exercise to identify additional active travel routes required to encourage alternative modes of transportation.
Identify new signage requirements including location and condition of existing signage.
Identify funding for design, production and installation.

Work with school and parents to encourage responsible parking around the school and school routes
Identify potential areas that could be utilised for Parking and work with Fife Council to look at developing these areas for use as additional car parking.

Fife Council, Primary Schools, local residents and community groups, Public Transport Provider (e.g Stagecoach, Dial-a-Bus and Buzz Bus.)

This theme highlights the priorities that emerged from community feedback and relate to aspects of your place that include streets and spaces, natural space, play and recreation.

PRIORITIES

MORE COMMUNITY GROWING SPACE



ACTIONS AND POTENTIAL PARTNERS

Carry out further community engagement to identify the level of community commitment for a community garden which could include a community orchard.
Identify a suitable space for community growing and ensure it is accessible for people of all abilities.
Work with Fife Council and make links with other similar local initiatives.

MAKE THE MOST OF OUR CHILDREN'S PLAY PARKS



Audit of play parks across the area and decide on priorities for improvement.
Work with the local community, Fife Council and other partners to carry out a community mapping exercise looking at green space and how it can be designed to best suit the needs of everyone.

MORE OUTDOOR AND SPORTS FACILITIES



Carry out community engagement on the theme of outdoor and sports facilities to help identify level of need and type of facilities required.
Explore options for the creation of an outdoor adventure playground for kids that can be kept free of dog fouling.

PRESERVE AND ENHANCE OUR NATURAL ENVIRONMENT



Wider promotion of amenities, walks, built and natural heritage to encourage people to stop and visit.

MAKE THE MOST OF EXISTING GREEN SPACE



Work with the local community, Council and others to carry out a community mapping exercise looking at green space, including parks and ponds, and how it can be designed to best suit the needs of everyone.

POTENTIAL PARTNERS

Fife Council, Sport Scotland, NatureScot, local residents and community groups, Local Councillors.

This theme highlights the priorities that emerged from community feedback and relate to aspects of your place that include facilities and services, work and local economy, housing and community and social interaction.

PRIORITIES

MORE SOCIAL SPACES



ACTIONS AND POTENTIAL PARTNERS

Investigate opportunities for community ownership of the co-op as a social space.
Investigate opportunities for a base for Kelty Community Cinema.
Improvement of the local library to make it larger, more accessible for people with special needs, and open for longer hours.
Establishment of a youth centre for kids to gather and engage in various activities.

MORE ACTIVITIES FOR PEOPLE OF ALL AGES



Carry out further engagement activities to find out what activities people would like to see.
Expand variety of clubs and activities to include coding, gaming, science, and other non-sporting interests.
Work together to create a Directory to promote existing activities for all ages and abilities and identify gaps in provision.
Look at ways to create activities that are accessible, both in physical and financial terms.

REGENERATION OF MAIN STREET AND GREATER VARIETY OF SHOPS LOCALLY



Carry out consultation activities with residents and businesses around Main Street development.
Investigate opportunities for community ownership of the co-op as a social space.
Lobby affordable retailers such as Aldi and Lidl to build a store local and encourage an increase in the number of local shops e.g. flower shop, green grocers.
Look at schemes to promote/incentivise local shopping.
Bring local traders together to see how they can work together to improve the shopping experience for local people.
Promote Kelty Main Street as a niche shopping area and look to attracting appropriate retail shops.

MORE AFFORDABLE HOUSING



Working with and lobbying Fife Council to provide local people with affordable as well as Social Housing to ensure that Kelty people can continue to live in their own community if desired.

MORE TRAINING OPPORTUNITIES LEADING TO WORK



Approach local college to find out if they can provide local teaching provision to offer local trade and skills-based training opportunities.
Maximise training opportunities locally.

PRIORITIES

ACCESS TO HEALTH SERVICES FOR EVERYONE



ACTIONS AND POTENTIAL PARTNERS

Promote enhanced services that are provided by the local pharmacy.
 Promote any additional local health and wellbeing services that are available.
 Explore opportunities for increased health services to accommodate the growth in population.

E-CHARGING STATIONS LOCALLY



Work with Fife Council to identify suitable locations for e-charging stations.
 Explore funding to purchase and install charging stations.

POTENTIAL PARTNERS

Fife Council, Fife College, Local Businesses, Social Housing providers, local residents including young people, Kelty Community Cinema and other community groups, DTAS, NHS Fife, Local Councillors.

This theme highlights the priorities that emerged from community feedback and relate to aspects of your place that include identity, belonging and feeling safe.

PRIORITIES

NO MORE BROKEN GLASS IN THE PARK



ACTIONS AND POTENTIAL PARTNERS

Work with Fife Council Environmental Services and CLD workers on the best way to tackle this issue.

IMPROVE THE LIGHTING



Work with Council to improve street lighting, especially paths and alleyways.
 Identify areas that require additional / new lighting.

MAKE OUR COMMUNITY SAFER



Explore a whole community approach to anti-social behaviour and vandalism.
 Identify areas that would benefit from CCTV.
 Explore the feasibility of neighbourhood watch schemes.
 Explore the idea of setting up regular Police/Community meetings to discuss current community issues. Work with Police Scotland to increase visible local policing in the area.
 Promote youth work/organisations in the community to give young people more opportunities and places they can identify as their spaces.

SAFE ROAD CROSSINGS



Explore the need for safe road crossings e.g. Zebra crossing

ENCOURAGE TOURISM



Development of a restaurant/social space to meet tourist potential - Explore scope for encouraging local business.
 Support existing community events that encourage tourism.

IMPROVE COMMUNITY/ FAMILY SUPPORT SERVICES



Work with partners on this based on needs identified through engagement.

POTENTIAL PARTNERS

VisitScotland, Fife Council, Police Scotland, NHS Fife, Local Councillors, local residents and community groups.

This theme highlights the priorities that emerged from community feedback and relate to aspects of your place that include care and maintenance, as well as influence and sense of control.

PRIORITIES

CLEANER STREETS
E.G. DOG FOULING,
FLY TIPPING



PROMOTE WHAT IS GOING ON LOCALLY



MORE RECYCLING FACILITIES



CELEBRATE, SUPPORT AND ENCOURAGE VOLUNTEERING



CELEBRATE KELTY



POTENTIAL PARTNERS

ACTIONS AND POTENTIAL PARTNERS

Have regular campaigns to reduce dog fouling.
Investigate with Fife Council the use of mobile CCTV cameras where fly tipping is happening on a regular basis with a view to fining those responsible.

Use a community newsletter to ensure promotion of what's happening locally to encourage social engagement.
Ensure local information regarding clubs and groups is displayed on all noticeboards.
Carry out a mapping exercise on existing noticeboards and look at locations where new ones could be installed.

Ensure bins are emptied of rubbish and dog fouling on a timely basis.

Continue to encourage people to participate in existing groups and activities and to volunteer to help.
Recognise and celebrate people's contribution in the community through involvement in volunteering awards.

Continue with summer floral enhancements and encourage more volunteers to assist with floral displays throughout the village.
Build on the annual Christmas Light winter celebration to make it brighter and better.
Work with local Primary School to get the children involved in celebrating Kelty.

Fife Council, NHS, Fife Voluntary Action, local community, Local Councillors, Primary Schools, local residents and community groups.

We seek to work in partnership to make real progress and invite residents, local groups and businesses, local authority departments and outside agencies to work together with us. If you can help with any of these issues and help improve our community please get in touch with Kelty Community Council.

“Kelty thrives on its deep rooted community spirit, a village which is inclusive and made up of people who respect each other and their environment.”

“All community facilities are utilised to their full potential providing space for events and activities for everyone.”

“An attractive, well-kept village with good recreational spaces, attractive gardens and welcoming gateways.”

“A place that celebrates its heritage and makes the most of its rural environment.”

“A vibrant village centre with good parking, clean pavements and safe roads.”

“A place with modern and accessible paths, tracks and parks, encouraging people to enjoy being outdoors and to get active.”



MAKING THE LINKS TO THE PLAN FOR FIFE COMMUNITY PARTNERSHIP PLAN

30

The Plan for Fife

Kelty Local Place Plan and Community Action Priorities

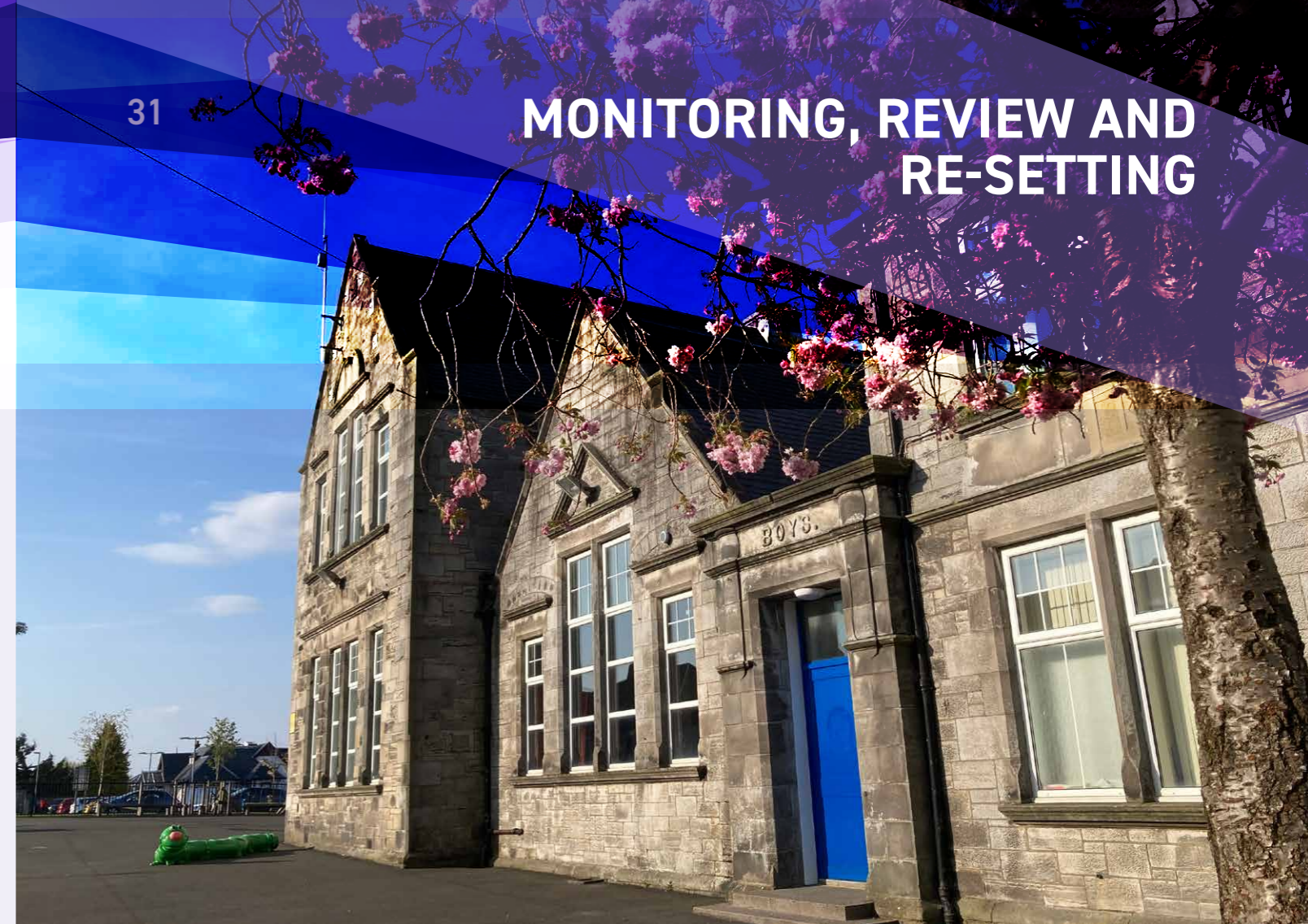
Our Kelty Local Place Plan and Community Action Priorities comes from a bottom up approach. It sits together with the Plan for Fife to encourage a joined up approach to community development and improved service provision. This plan represents the views and aspirations of local people and can be used to help encourage partnership working. It promotes opportunities for local groups, public agencies and service providers to work together to improve the quality of life for the people of Kelty.

The Plan for Fife Key Themes	Kelty Community Action Priorities linked to Place and Wellbeing Outcomes
<p>OPPORTUNITIES FOR ALL</p> <p>Creating a level playing field where everyone has a fair chance to succeed and contribute to the economy.</p>	<p>MOVEMENT AND RESOURCES</p> <p>Well connected with path networks for active travel and public transport that serves the public need as well as appropriate services and support.</p>
<p>THRIVING PLACES</p> <p>Creating communities where residents can flourish and lead fulfilling lives across various dimensions, including social, economic, environmental, and cultural aspects.</p>	<p>SPACES AND MOVEMENT</p> <p>A place with quality green spaces for recreation and play, complemented by well-maintained roads and parking that cater to community and business needs. Well connected with paths that ensure inclusivity and accessibility for everyone.</p>
<p>COMMUNITY LED SERVICES</p> <p>Initiatives that are driven, developed, and delivered by local communities to address specific needs or challenges within their area.</p>	<p>CIVIC AND STEWARDSHIP</p> <p>A well maintained and cared for community where people can play an influential role in how their community's needs are met for residents of all ages and abilities, giving them a sense of ownership and belonging.</p>
<p>INCLUSIVE GROWTH AND JOBS</p> <p>Fostering economic development while ensuring that the benefits are shared equitably among all segments of society.</p>	<p>RESOURCES</p> <p>A community that is well provided for with facilities and services to meet the needs everyone including access to local work and training opportunities to enable people to secure an independent lifestyle.</p>

We seek to work in partnership to make real progress and invite residents, local groups and businesses, local authority departments and outside agencies to work together with us. If you can help with any of these issues and help improve our community please get in touch with Kelty Community Council.

31

MONITORING, REVIEW AND RE-SETTING



The success of this Local Place Plan and Community Action Priorities depends on people in our community getting together to identify and address both the opportunities and threats the community faces.

For its part Kelty Community Council commits itself to constantly monitoring the Plan's progress and, on an annual basis, to organise a public meeting with an agenda which provides for the reporting of progress, or lack of it, and the re-setting of priorities and targets where circumstances have changed.

Acknowledgements and thanks!

We would like to recognise the support that has been given from the following agencies and organisations who have played their part in one way or another in helping create the Kelty Local Place Plan:

- Kelty Community Council <https://www.kelty.org.uk/>
- Coalfields Regeneration Trust <http://crtconnect.org.uk>
- Fife Council <https://www.fife.gov.uk/>
- Improvement Services <https://www.improvementservice.org.uk/>
- Green Map System <https://www.greenmap.org/>
- Place and Wellbeing Alliance <https://www.ourplace.scot/>
- Scottish Government <https://www.gov.scot/publications/national-planning-framework-4/>

Supporting Statements for propositions and amendments to the Local Development Plan 2017:

NPF4 / 3 BIODIVERSITY

Proposal

Improve parking and create a wildflower meadow at Lochore Meadows Country Park (The Meadies).

Introduction

This amendment proposes improving parking facilities and creating a wildflower meadow at Lochore Meadows Country Park to enhance access and biodiversity.

Background and Context

Lochore Meadows Country Park is a popular recreational area that faces parking challenges. Additionally, creating a wildflower meadow can significantly enhance local biodiversity and aesthetic value.

Community Engagement and Support

Community feedback indicates strong support for these improvements. Key points include:

- **Access Issues:** Residents have highlighted the need for better parking facilities.
- **Biodiversity Support:** There is enthusiasm for initiatives that enhance local biodiversity, such as wildflower meadows.

Justification

1. **Improved Access:** Enhanced parking facilities will make the park more accessible to visitors.
2. **Biodiversity Enhancement:** Wildflower meadows support a wide range of pollinators and other species.
3. **Community Benefit:** These improvements enhance both recreational and ecological value for the community.

Alignment with NPF4 Policies

- **NPF4 Policy 3:** Biodiversity: This proposal supports the policy's goals of enhancing and creating habitats to improve biodiversity.

Technical Considerations

Key technical considerations include:

- **Parking Design:** Ensuring the new parking facilities are environmentally sustainable.
- **Wildflower Meadow:** Selecting native wildflower species and developing a maintenance plan.

Conclusion:

Improving parking and creating a wildflower meadow at Lochore Meadows Country Park will enhance both access and biodiversity, aligning with NPF4 policies.

NPF4 / 7 HISTORIC ASSETS AND PLACES

Proposal

Reference the following buildings and sites as historic assets of Kelty:

- The Masonic Hall, Main Street
- Moray Institute, Main Street
- St Joseph's Church, Cocklaw Street
- Kelty Parish Church
- Kelty Primary School

Introduction

This amendment proposes recognising specific buildings and sites in Kelty as historic assets. This initiative aims to preserve and highlight the cultural and historical significance of these structures.

Background and Context

Kelty has a rich history, and several buildings and sites hold significant cultural value. Recognising these as historic assets ensures their preservation and promotes local heritage.

Community Engagement and Support

Community consultations have shown strong support for preserving Kelty's historic buildings. Key points include:

- **Cultural Heritage:** Residents value the historical and cultural significance of these sites.
- **Preservation Efforts:** There is strong community support for initiatives that preserve and maintain historic buildings.

Justification

1. **Cultural Preservation:** Recognising these sites as historic assets ensures their protection and maintenance.
2. **Community Identity:** Preserving historic buildings strengthens local identity and pride.
3. **Tourism Potential:** Highlighting historic sites can attract visitors and support local tourism.

Alignment with NPF4 Policies

- **NPF4 Policy 7:** Historic Assets and Places: This proposal aligns with the policy's emphasis on preserving and enhancing historic assets and places.

Technical Considerations

Key technical considerations include:

- **Heritage Surveys:** Conducting surveys to document and assess the historical significance of these sites.
- **Preservation Plans:** Developing plans for the preservation and maintenance of the identified historic assets.

Conclusion

Recognising specific buildings and sites as historic assets aligns with NPF4 policies and supports cultural preservation in Kelty.

NPF4 / 9 BROWNFIELD, VACANT, DERELICT LAND, AND EMPTY BUILDINGS

Proposal

Reference the following buildings and sites for potential community use:

- Old Baxters building – B914
- The Old Co-op building – Main Street

Introduction

This amendment proposes repurposing brownfield sites and vacant buildings in Kelty for community use. This initiative aims to revitalize underutilized spaces and support community development.

Background and Context

Brownfield sites and vacant buildings present opportunities for community-driven development. Repurposing these spaces can enhance local amenities and stimulate economic growth.

Community Engagement and Support

Community consultations have shown strong support for repurposing underutilised sites. Key points include:

- **Community Development:** Residents support initiatives that enhance local amenities and services.
- **Economic Revitalization:** There is enthusiasm for projects that stimulate economic growth and job creation.

Justification

1. Supporting Statements for Proposed Amendments to the Local Development Plan 2017: Kelty Propositions.

NPF4 / 21 PLAY, RECREATION AND SPORT

Proposal

Make the 'Line Walk' a multi-user path to connect Kelty to Lochore Meadows Country Park and Blairadam Forest via the Iron Bridge

Introduction

This supporting statement is submitted in support of the proposed amendment to the Local Development Plan 2017 for Kelty. The proposal involves converting the 'Line Walk' into a multi-user path, creating a continuous route connecting Kelty to Lochore Meadows Country Park and Blairadam Forest via the Iron Bridge.

Background and Context

The 'Line Walk' is a path that has the potential to become a valuable recreational asset. Connecting it to Lochore Meadows Country Park and Blairadam Forest would create a continuous network of paths, encouraging outdoor activities and promoting connectivity within the community.

Community Engagement and Support

Community engagement activities, including surveys and public meetings, have revealed strong support for the proposal. Key findings from community engagement include:

- **Increased Accessibility:** Residents expressed a desire for better-connected paths to facilitate outdoor activities such as walking, cycling, and running.
- **Health and Well-being:** There is widespread recognition of the health benefits associated with increased physical activity and access to nature.
- **Tourism Potential:** Enhancing the path network is seen as a way to attract more visitors to the area, benefiting local businesses.

Justification

1. **Promotes Active Lifestyles:** The multi-user path will encourage walking, cycling, and other outdoor activities, contributing to healthier lifestyles.

2. **Enhances Connectivity:** Creating a continuous route will improve connectivity between Kelty, Lochore Meadows Country Park, and Blairadam Forest, making it easier for residents and visitors to access these areas.
3. **Tourism and Economic Benefits:** The improved path network will attract tourists, benefiting local businesses and contributing to the local economy.
4. **Environmental and Social Benefits:** Providing a safe, accessible outdoor space will support mental health and well-being, while also encouraging sustainable transport options.

Alignment with NPF4 Policies

- **NPF4 Policy 13:** Sustainable Transport: The proposal promotes sustainable transport by encouraging walking and cycling.
- **NPF4 Policy 21:** Play, Recreation, and Sport: Creating a multi-user path enhances recreational infrastructure, supporting active lifestyles.
- **NPF4 Policy 32:** Aquaculture: The path's proximity to natural water bodies aligns with goals to protect and promote aquatic ecosystems.

Technical Considerations

- **Path Design:** The path will be designed to accommodate multiple users, including pedestrians, cyclists, and those with disabilities.
- **Safety Measures:** Adequate lighting, signage, and safety barriers ensure the path is safe for all users.
- **Environmental Impact:** The path development will consider environmental impact, with measures to protect local flora and fauna and minimise disruption.

Conclusion

Converting the 'Line Walk' into a multi-user path will significantly enhance recreational opportunities, promote active lifestyles, and improve connectivity within Kelty. This proposal aligns with NPF4 policies on sustainable transport, recreation, and environmental protection, ensuring a balanced approach to community development and well-being.

NPF4 / 22 FLOOD RISK AND WATER MANAGEMENT

Proposal

Improve the drainage in the Lochore Meadows Country Park (The Meadies) to reduce flooding and surface water on the Great North Road.

Introduction

This supporting statement is submitted in support of the proposed amendment to the Local Development Plan 2017 for Kelty. The proposal aims to improve drainage in Lochore Meadows Country Park (The Meadies) to reduce flooding and surface water issues on the Great North Road.

Background and Context

Lochore Meadows Country Park is prone to flooding due to its location and existing drainage infrastructure. Flooding and surface water on the Great North Road pose significant safety hazards for motorists and pedestrians, disrupting traffic flow and access to the park.

Community Engagement and Support

Extensive community engagement activities, including surveys and public consultations, indicate strong support for improving drainage infrastructure. Key findings from community engagement include:

- **Safety Concerns:** Residents expressed concerns about the safety risks associated with flooding and surface water on the Great North Road.
- **Environmental Impact:** There is widespread recognition of the environmental benefits of improved drainage systems.
- **Local Support:** Park visitors and local businesses support the proposal, highlighting its importance for accessibility and safety.

Justification for the Amendment

1. **Enhanced Safety:** Improved drainage will reduce flooding and surface water, enhancing safety for motorists and pedestrians on the Great North Road.

2. **Environmental Benefits:** Effective drainage systems will minimize waterlogging and promote better water management within the park.
3. **Community Benefits:** Reduced flooding will improve accessibility to Lochore Meadows Country Park, benefiting local residents and visitors.

Alignment with NPF4 Policies

- **NPF4 Policy 22:** Flood Risk and Water Management: This proposal aligns with the policy's goal of improving water management infrastructure to mitigate flood risks.

Technical Considerations

- **Drainage Design:** The design will incorporate sustainable urban drainage systems (SUDS) to effectively manage surface water.
- **Environmental Impact Assessment:** An assessment would be required to ensure minimal environmental disruption and maximum ecological benefits.

Conclusion

Improving the drainage in Lochore Meadows Country Park to reduce flooding and surface water on the Great North Road will enhance safety, promote environmental sustainability, and improve access to the park, aligning with NPF4 policies on flood risk and water management.

MAKING IT HAPPEN

To find out more information about this plan or to volunteer with any projects please contact by email to kirkclaire53@gmail.com

A big thank you to everyone in our local communities who helped make this Kelty Local Place Plan possible.



Design: Arken Creative
LPP Maps: Colour & Light Ltd.
Print: Armstrong Printing (Alloa) Ltd.
Photography: Ailsa Lindsay | Enid Trevett



**Coalfields
Regeneration
Trust**

BUILDING PROSPERITY & OPPORTUNITY

The Coalfields Regeneration Trust
Registered Charity No.1074930 in England and Wales
A Charity Registered in Scotland No SCO39277



For a PDF version of the Kelty Local Place Plan and for further information visit

www.crtconnect.org.uk