

Temporary Road Closure

WHERE ? C36, Saline (from its junction with the B913 to the Fife Boundary)).

The alternative route for through traffic is via B913 & A977

Access for emergency service vehicles and residents will be maintained.

Pedestrian access will be maintained.

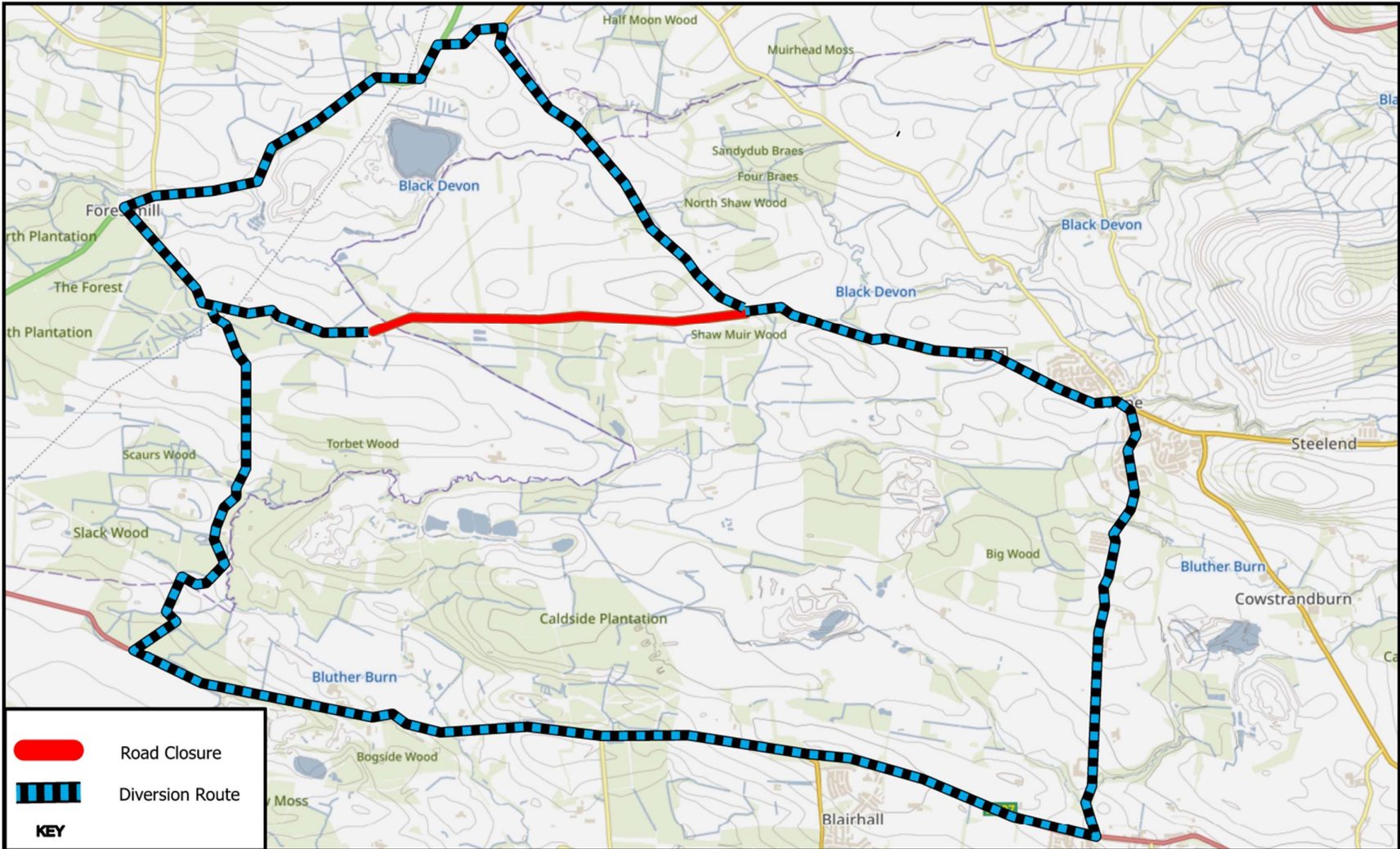
WHEN ? Between 8am and 6pm on Thursday 19th September 2024.

WHY ? To allow pole installation works to be carried out in safety.

WHO ? Freeflow TM are responsible for these works and can be contacted as follows:

Project Engineer: 01355 204 311






KEY

-  Road Closure
-  Diversion Route

© Crown copyright and database rights 2024.
 Ordnance Survey 100023385
 Aerial Photography © copyright Getmapping.

N

 Scale: 1:35,000

C36, Saline.

Prepared By: BL
Service: Roads & Transportation

