

# CROSSGATES AND MOSSGREEN



LOCAL PLACE  
PLAN 2024



- 3 FOREWORD
- 4 INTRODUCTION
- 5 OUR COMMUNITY NOW INCLUDING LPP BOUNDARY MAP
- 10 COMMUNITY CONSULTATION
- 11 PICTURE MY PLACE - RESULTS OF THE PLACE STANDARD ASSESSMENT
- 16 CROSSGATES & MOSSGREEN LOCAL PLACE PLAN
- 17 FIFE COUNCIL LDP2017
- 18 MAP SHOWING LINKS TO NPF4 SUSTAINABLE, PRODUCTIVE PLACES AND LIVEABLE PLACES
- 20 PROPOSITIONS FOR CONSIDERATION IN THE FIFE LOCAL DEVELOPMENT PLAN
- 22 NPF4 AND THE PLAN4FIFE LINK TO COMMUNITY ASPIRATIONS
- 23 WORKING TOGETHER FOR A BETTER PLACE FOR EVERYONE!
- THEMES AND PRIORITIES FOR COMMUNITY ACTION:
- 24 THEME 1 | MOVEMENT
- 25 THEME 2 | SPACES
- 26 THEME 3 | RESOURCES
- 27 THEME 4 | CIVIC
- 28 THEME 5 | STEWARDSHIP
- 29 OUR COMMUNITY VISION
- 30 MAKING THE LINKS TO THE FIFE COMMUNITY PARTNERSHIP PLAN (PLAN 4 FIFE)
- 32 APPENDIX
- 40 ACKNOWLEDGEMENTS AND MAKING IT HAPPEN



We are pleased to present one of the first Local Place Plans to be prepared in Fife. This is the outcome of hard work and commitment by the Crossgates and Mossgreen Community Council alongside their community and all those with an interest in the future of Crossgates and Mossgreen.

The Crossgates and Mossgreen Local Place Plan has been prepared by following the outcomes of the consultation and workshops that took place during 2021-23 supported by the Coalfields Regeneration Trust (CRT).

The CRT Place Standard Toolkit and Virtual Engagement Room allowed us to reach out to the local community and has been a key driver behind the content of this work.

We have worked closely with the National Planning Framework (NPF4) and used it as our guide when framing our Local Place Plan.

Thanks go to Green Map System for their support in providing their resources to help us make the spatial mapping as accessible as possible using icons to identify policy and place.

This is very much a plan for the people of the Crossgates and Mossgreen area and their

involvement has helped guide how the district can develop in the future and ensure that it continues to be an attractive place to live, work, study, enjoy and invest.

To help achieve this, the Crossgates and Mossgreen Local Place Plan sets out a future vision for how our communities could be improved and the actions required to help achieve this.

The local community have also identified community action priorities that they want to see happen. These are set out under the five themes of the Improvement Service 'Place and Wellbeing Outcomes' designed to improve Scotland's wellbeing and reduce inequality.

The community working together has been the key to success so far and continues to act as a benchmark for future engagement in planning and community planning in our district.

# INTRODUCTION



“ Whatever the problem, community is the answer. MARGARET WHEATLEY

CRT Place is a place based approach to support the regeneration and creation of sustainable and resilient communities in Scotland’s former coal mining communities.

We are using a range of methods to capture people’s views of where they live, as it is now and how they see the future in their local community. This approach promotes dialogue and cooperation between community members, partners and outside agencies. Any type of community led plan is always a work in progress, however it helps to give concrete steps to help shape local communities going forward. The aim of this is that future generations can thrive in changing times so that no one is left behind.

## Background

Crossgates and Mossgreen community members produced the first Crossgates and Mossgreen Community Action Plan that ran from 2016-2021 with support from Coalfields Regeneration Trust. Due to the effects of the Covid pandemic it’s been a slow journey to be able to review the plan but over time the Crossgates Steering Group have been working with CRT to organise a community wide engagement with the aim of producing a new Crossgates and Mossgreen Local Place Plan to deliver the spatial vision and community action priorities for the district.

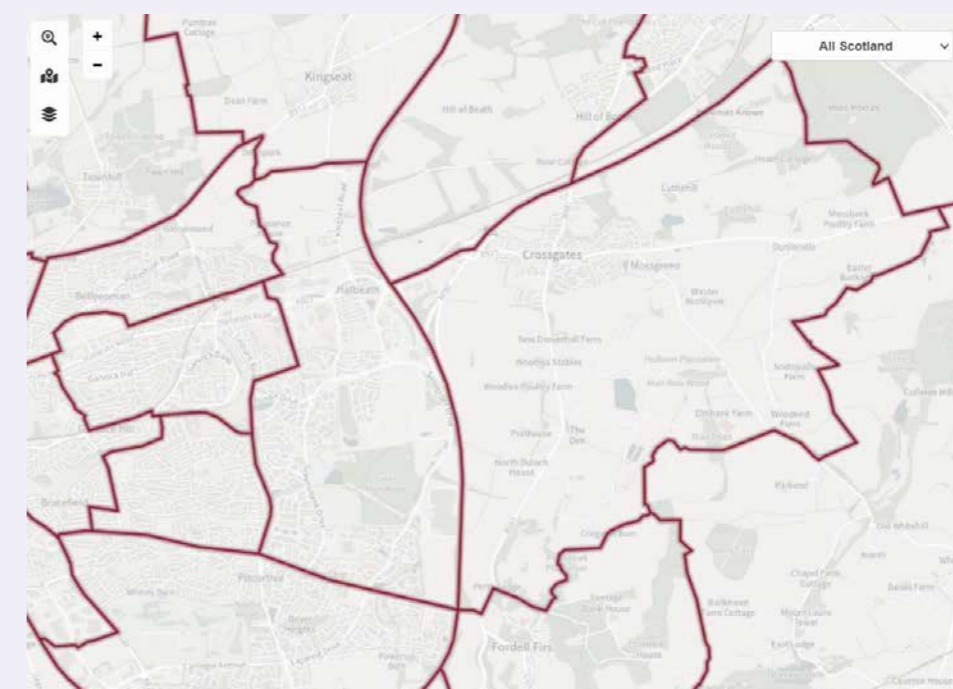
The Steering group during the process of creating this local place plan drew from members of Crossgates and Mossgreen Community Council.

# OUR COMMUNITY NOW



## Location

Crossgates and Mossgreen are situated in the region of Fife, Scotland. Specifically, they are located in the southwestern part of Fife, near the town of Dunfermline. Crossgates is a small village, while Mossgreen is a nearby residential area. They are both part of the broader community within Fife, which is known for its rich history, scenic landscapes, and proximity to major cities like Edinburgh.



Crossgates and Mossgreen Community Council Boundary and is also the boundary for the Local Place Plan.

Source: <https://www.communitycouncils.scot/community-council-finder>



### Population


Total population for Crossgates and Mossgreen was

**2,890**


based on 2021 Mid-Year Population Estimates, National Records of Scotland.

### The percentage breakdown

 Males: **47.2%**

 Females: **52.8%**

 Children: **14.7%**

 Working age: **61.5%**

 Age 65+: **23.8%**

### Housing

The Fife Housing Tenure 2022 database tells us that there are

**1,328**

households in Crossgates with **76.6%** Owner Occupier, **28%** Local Authority **11.8%** Private rented **8.7%**.

Today the mix of housing has changed dramatically with the large number of private housing developments that have taken place in the area in recent years.

### Health & Care

The average age of people with good health or people with a limiting long term ill-ness roughly equates to Scotland as a whole. Those who are economically inactive and permanently sick / disabled is slightly more than that of Scotland as a whole. In addition there are more households with one or more carers in residence (19.3% compared to 16.8%). *Census 2011*

### Local Economy and Employment

Between 2019 and 2022/23 Dunfermline, the Kirkcaldy Area and North East Fife are the only areas whose latest economic inactivity rate is lower than both the Fife and Scottish rates. Dunfermline has the lowest rate of inactivity in Fife.

*Due to small sample sizes at committee area levels, all these figures should be viewed with caution.*

*Source: ONS Annual Populations Survey, Jan-Dec 2019 and 2022/23 Note: Those who are economically inactive are people aged 16 and over without a job who have not sought work in the last four weeks and/or who are not available to start work in the next two weeks, ie they are neither employed nor unemployed.*

<https://www.investfife.co.uk/wp-content/uploads/2024/03/2024-01-Fife-Local-Area-Economic-Profiles-2022-23-2.pdf>



## Education and Training

The village has one school, Crossgates Primary School, which also contains a nursery and under 3 provision. The school is split into 8 classes with around 210 students in the school. The school originally dates from 1920.

Students from Crossgates Primary typically attend, Beath High School in Cowden-beath which is the nearest high school to Crossgates.

## Social and Community

Crossgates has a community centre run by Fife Council which has facilities for play-ing Badminton and Carpet Bowls.

Crossgates is home to the football club Crossgates Primrose, who compete in the East of Scotland League. The club play at Humbug Park in the village.

Crossgates has its own Bowling Club which is located to the rear of the Community Centre (Miners' Institute) and has been there since 1940.



## Public Transport

The nearest train station is Dunfermline and there is a Park and Ride at Halbeath.

Halbeath Park & Ride is a bus park and ride scheme from the west of Fife to Edinburgh and Glasgow. It is a joint initiative – developed by Fife Council and Transport Scotland (the Scottish Government) – and comes as part of the Forth Replacement Crossing Project. Halbeath P&R is located to the east of Dunfermline, at junction 3 of the M90. It has access from the A92 at Crossgates Roundabout.

<https://www.fife.gov.uk/kb/docs/articles/roads,-travel-and-parking/park-and-ride-sites/halbeath>

In Crossgates there is a bus service through the village that goes to Cowdenbeath.

## Heritage

Like many towns in Fife, Crossgates has a history intertwined with industry. In the 19th and early 20th centuries, industries such as coal mining, weaving, and pottery were prevalent in the area. These industries shaped the landscape and the livelihoods of its inhabitants.

Useful links for further information:

[https://m.facebook.com/people/Crossgates-and-Mossgreen-Community-Council/100079522333693/?locale=cx\\_PH](https://m.facebook.com/people/Crossgates-and-Mossgreen-Community-Council/100079522333693/?locale=cx_PH)

[https://www.facebook.com/groups/2652238881718093/?locale=en\\_GB](https://www.facebook.com/groups/2652238881718093/?locale=en_GB)

<https://www.facebook.com/communitywoodland/>

<https://www.fife.gov.uk/facilities/community-centre/crossgates-community-leisure-centre>

<https://know.fife.scot/>

## Environment

There is a lot of volunteering activity supporting and caring for the rich greenspace in the area including Crossgates Community Woodland who are a charitable organisation of volunteers whose aim is to maintain and develop the area of woodland known as the Taft. The Crossgates Green Fingers Group have transformed a derelict piece of land near the community centre which is now an attractive community garden.



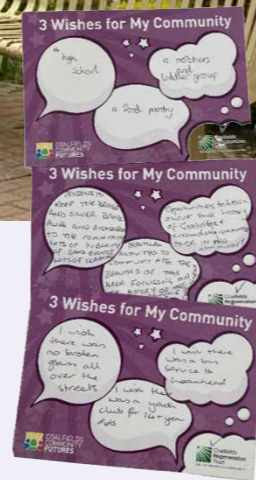
## Gathering Everyone's Views

A series of community engagement events and online surveys over the last year has enabled us to gather people's views to help inform this action plan.

Consultations included:

- The Community Centre hosted a Place Standard Assessment event and two community mapping workshops October 2023 and April 2024.
- Attendance at the Community Gala days in 2022 and 2023.
- 3 Wishes Campaign - the 3 Wishes campaign took the form of a postcard and on line survey option and was used as well as at local events.
- The Primary School pupils all got involved in using the Place Standard tool.

Postcards were delivered to every household in Crossgates and Mossgreen with a collection box available at the Community Centre as well as an on line option.



**I wish the speed limit was 20mph as you enter the village**

**I wish we had more for young people**

**I wish there were small, accessible houses available for the elderly who want to live local as they get older**

**I wish we had a bus that went up Springhill Braes and was a regular service**

**I wish we had a pump track for my bike**

**I wish we had a place to meet e.g. community cafe**

**I wish there were on demand traffic lights outside the British Legion**

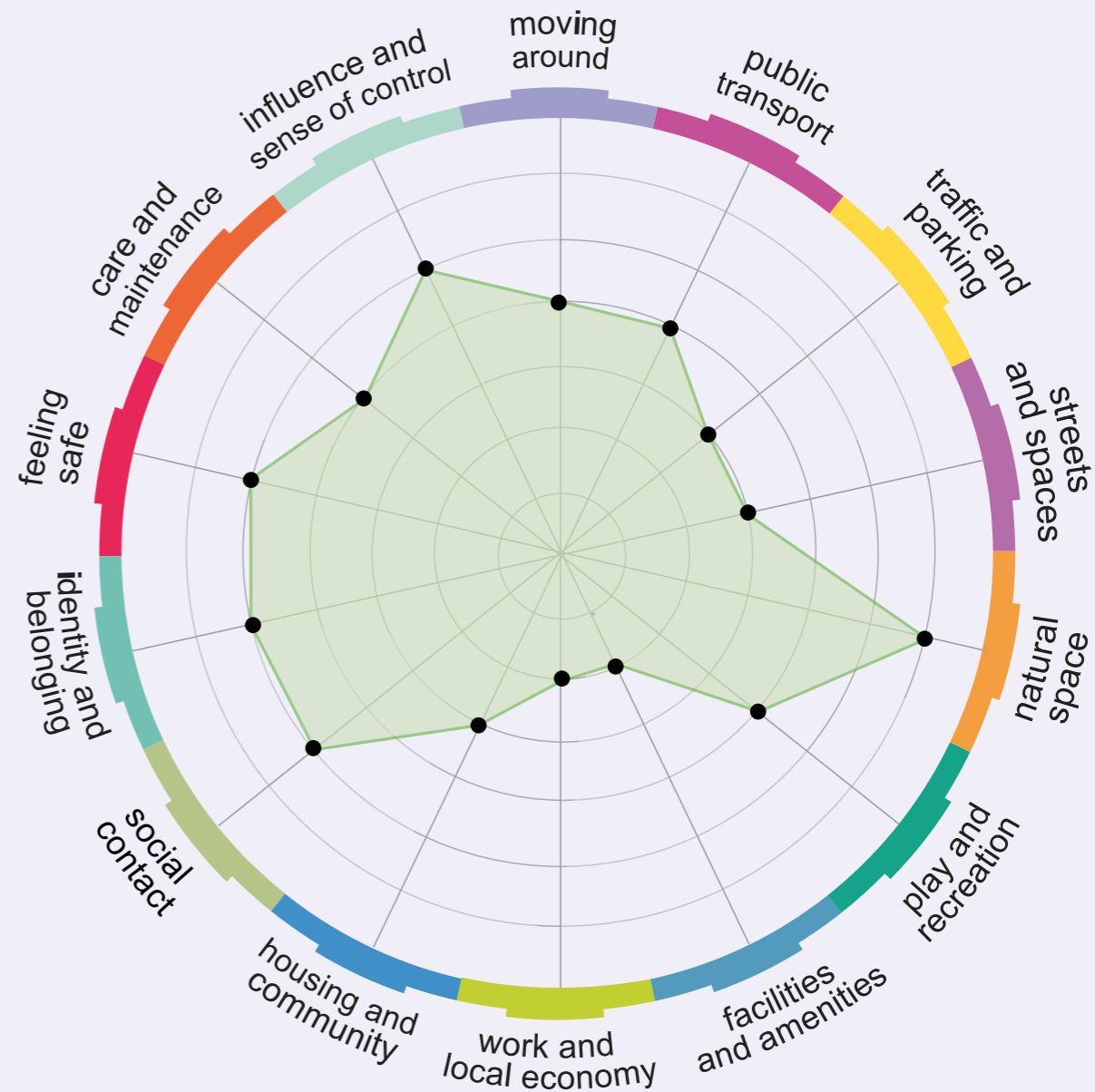
**I wish there was parking available at the primary school**

**I wish we had a Post Office**

## Results of the Place Standard Assessment

### Place Standard Assessments by community member

The graphs shows the strong and the weak areas, the higher the score plotted the better the service or provision. This gives a good indicator of where improvements need to be made.



The community consultation highlighted the following important issues for local residents using the Place Standard Themes:

### Movement:

- Requests for improved transportation infrastructure, including reinstating bus services, safer pedestrian access to the Halbeath Park and Ride, and a desire for new railway halt.
- Calls for traffic calming measures, improved road safety, and parking solutions to address traffic and parking issues within the village.

### Spaces:

- Desires for better upkeep and signage for walking trails, benches at bus stops, and additional car parking spaces.
- Requests for communal spaces such as tennis courts, sports hubs, and all-weather courts for various activities.
- Protection of natural spaces such as the Taft Community Woodland is a significant concern.

### Resources:

- Calls for amenities like public toilets, cafes with play areas, and community pubs with outdoor spaces.
- Suggestions for additional services such as swimming pools, spa facilities, post offices, and youth activities supported and encouraged by responsible adults.

### Civic and Stewardship:

- Concerns about the impact of new housing developments on the natural and built environment, including potential flooding and congestion.
- Calls for developers to contribute to the improvement of social and physical infrastructure to support both new and existing residents.

### Service and Support:

- Concerns about access to medical services, including difficulty obtaining GP appointments and the need for improved medical facilities.
- Calls for collaboration between local authorities and NHS authorities to address pressure on local GP services.

### Work and Economy:

- Desires for commercial developments that provide employment opportunities and essential services like shops, cafes, and post offices.
- Preserving the village atmosphere, managing new housing developments, and supporting local businesses are key.

### Housing and Community:

- Requests for a mix of housing suitable for all generations, including bungalows and ground floor flats for older people.
- Concerns about school capacity and the need for expansion alongside new housing developments.
- Suggestions for housing developments to incorporate eco-friendly elements and support independent living for the elderly and disabled.

### Identity and Belonging:

- Desires for community focal points like cafes, family restaurants, and pubs, as well as initiatives to enhance community feel and identity.
- Requests for repairs to community infrastructure such as the plaque outside the community centre and street signs to maintain community pride.

### Social Interaction:

- Calls for more social facilities, events, and activities to foster community interaction and engagement.
- Concerns about issues such as dog fouling and the need for enforcement measures to address them.

### Feeling Safe:

- Suggestions for more visible policing and measures to improve safety for children and residents of all ages.
- Concerns about traffic safety, through traffic, and parking-related hazards.

### Care and Maintenance:

- Desires for improvements in street cleaning, pavement care, and maintenance to ensure a clean and safe environment.
- Calls for measures to address littering, dog fouling, and other issues affecting community cleanliness.

### Influence and Control:

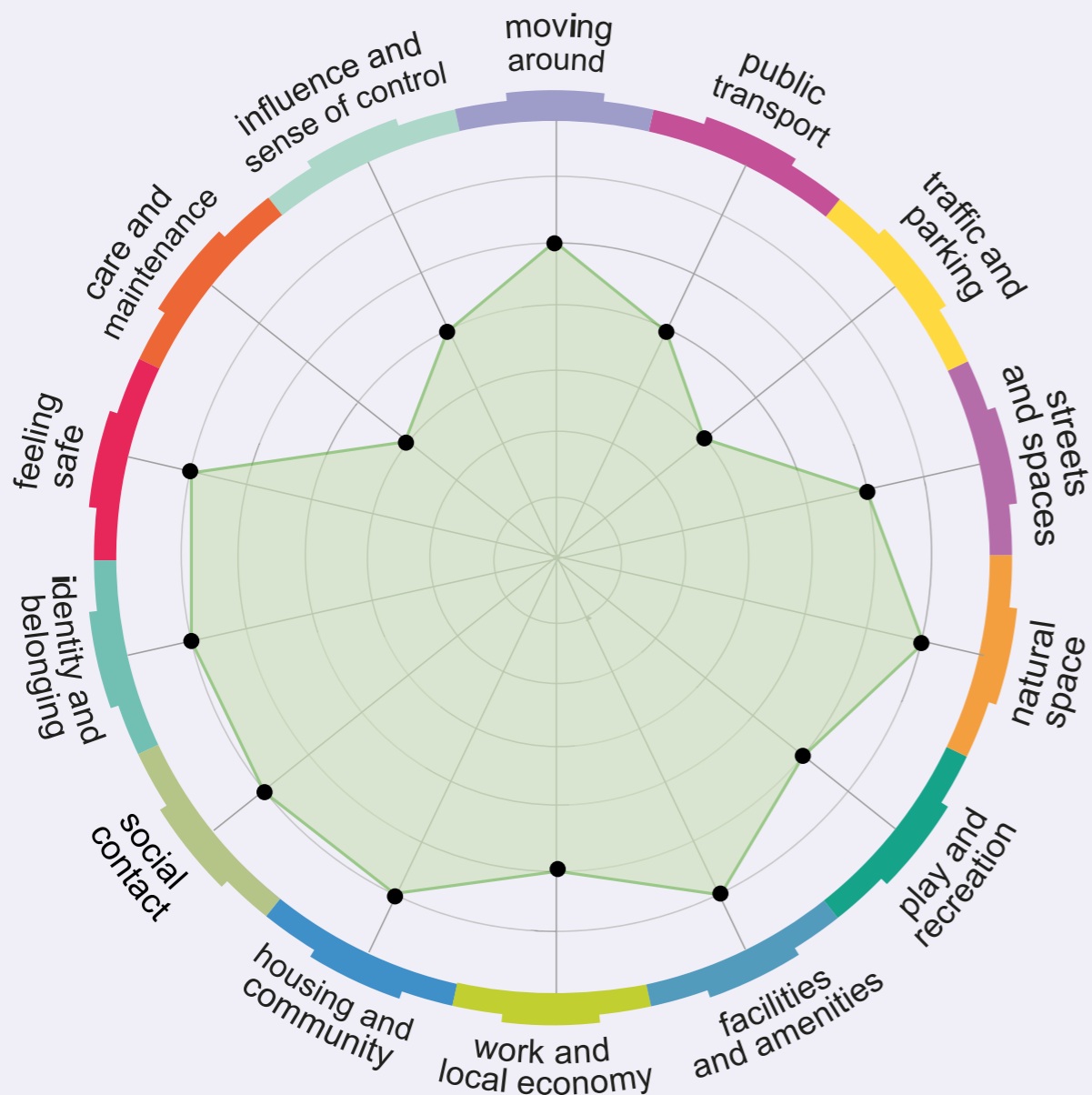
- Calls for developers and planning authorities to consider community needs and mitigate the impacts of new developments.
- Desires for community involvement and control over issues such as planning, infrastructure, and environmental stewardship.



**Results of the Place Standard Assessment**

**from the Place Standard Assessments completed by Crossgates Primary School pupils**

The graphs shows the strong and the weak areas, the higher the score plotted the better the service or provision. This gives a good indicator of where improvements need to be made.



Crossgates Primary pupils were asked ‘What is the best thing about where you live?’

- 1. The Park:** Repeated mentions of going to the park, playing there, and enjoying its facilities.
- 2. School:** Positive sentiments towards the school, including enjoyment of at-tending, appreciation for its facilities, and friendships formed there.
- 3. Community Spirit:** Comments about the kindness and friendliness of the community, as well as the presence of local shops, parks, and activities.
- 4. Natural Environment:** Appreciation for the green spaces, including mentions of parks, fields, woods, and gardens.
- 5. Friends and Social Connections:** Many references to having friends nearby, playing with them, and feeling connected to the local community through social activities.

These themes reflect the importance of social connections, access to recreational spaces, and a supportive community environment in the lives of the pupils at Crossgates Primary.

Pupils were asked ‘What would you like to see happen in the place where you live?’

- 1. More Parks and Recreational Facilities:** Many pupils expressed a desire for additional parks, playgrounds, bike parks, skate parks, and other recreational facilities to be developed in the area.
- 2. Community Improvements:** Some pupils wished for improvements to existing parks, such as adding slides, swings, or seating areas. Others mentioned desires for cleaner environments, fewer restrictions on activities like ball games, and less littering.
- 3. Additional Amenities and Entertainment:** Several pupils expressed desires for new amenities and entertainment options, including swimming pools, arcades, toy shops, and cafes.
- 4. Infrastructure Enhancements:** Some pupils mentioned desires for improvements to infrastructure, such as better pathways, more grass and greenery, and upgrades to roads or traffic management.
- 5. Social Spaces and Activities:** There were desires for more social spaces, such as astro turf pitches, basketball courts, and areas for learning and activities like trampoline parks.

These aspirations reflect the pupils’ desires for a more vibrant, engaging, and well-equipped community with ample opportunities for recreation, socialising, and enjoyment.



# CROSSGATES & MOSSGREEN LOCAL PLACE PLAN GIVES REGARD TO NATIONAL PLANNING FRAMEWORK 4

“ The world is changing, and so are Scotland’s places. This strategy sets out how we will work together in the coming years to improve people’s lives by making sustainable, liveable and productive places. This will play a key role in delivering on the United Nations Sustainable Development Goals, as well as our national outcomes. We have substantially re-worked the Framework’s ‘National Spatial Strategy’, which sets out how our approach to planning and development will help achieve a net zero, sustainable Scotland by 2045.”

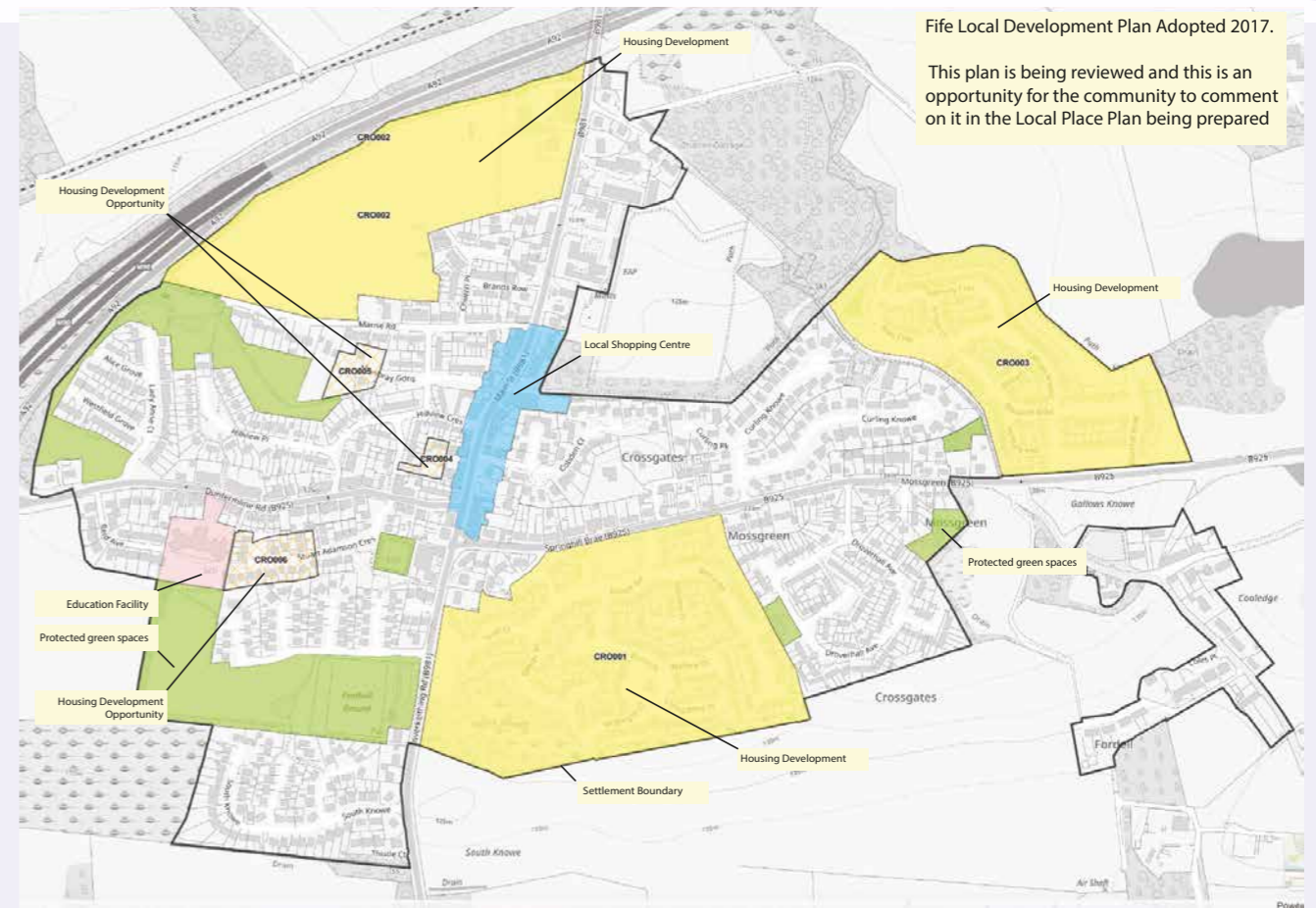
STATEMENT BY MINISTER FOR PUBLIC FINANCE, PLANNING AND COMMUNITY WEALTH TOM ARTHUR ON THE FOURTH NATIONAL PLANNING FRAMEWORK (NPF4) ON 8TH NOVEMBER 2022

## CRT Local Place Plan Maps use icons to represent NPF4 policies

The information gathered from the workshops has been translated onto a themed map using Green Map Icons that represent their relationship to National Policy as set out in NPF4. This helps fulfil a requirement of Local Place Plans to show the links between local propositions and National policies. Map themes include Sustainable, Productive and Liveable.



# FIFE COUNCIL LDP2017

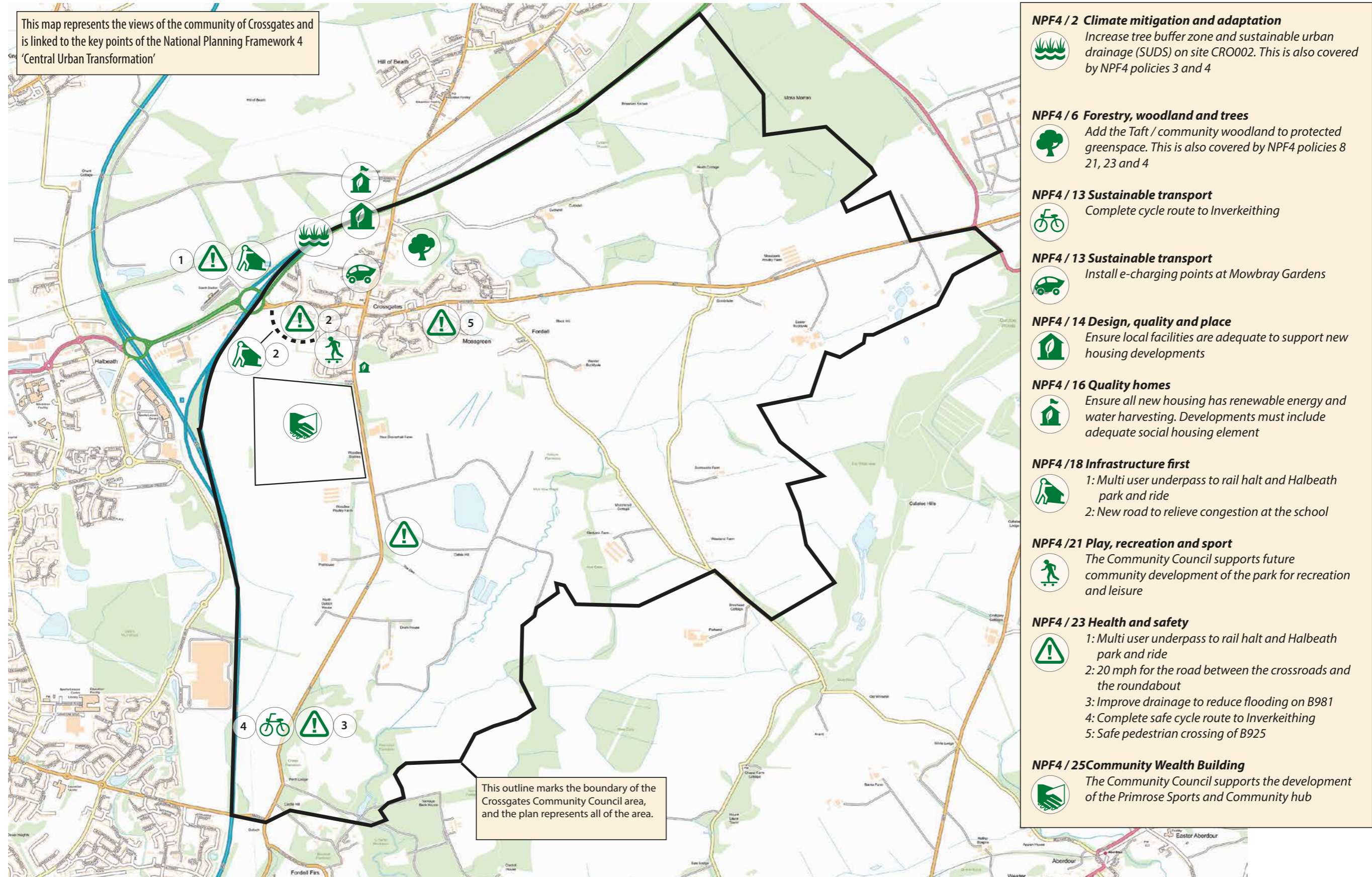


Fife Council 2017 Local Development Plan Map of Crossgates and Mossgreen

## Crossgates

How to read the icons: NPF4/2 represents NPF4 Policy 2 Climate Mitigation and Adaptation

## Sustainable, Liveable and Productive



Map: Contain Ordnance Survey data © Crown copyright and database rights 2011. Icons: Copyright © GreenMap Systems (GMS)

# PROPOSITIONS FOR CONSIDERATION IN THE FIFE LOCAL DEVELOPMENT PLAN

20



## 1. NPF4 / 2 CLIMATE MITIGATION AND ADAPTATION

- 1.1 Increase tree buffer zone to reduce pollution and noise.
- 1.2 Create an adequate sustainable urban drainage (SUDS) on site CRO002 to prevent flooding. This is also covered by NPF4 policies 3 (Biodiversity) and 4 (Natural spaces).

This is an amendment to the Local Development Plan 2017.

## 2. NPF4 / 6 FORESTRY, WOODLAND AND TREES

Add The Taft Community Woodland to protected greenspace. This is also covered by NPF4 policies 8 (Green belts), 21(Play, Recreation and Sport), 23 (Health and Safety), and 4 (Natural Spaces).

This is an amendment to the Local Development Plan 2017.

## 3. NPF4 / 13 SUSTAINABLE TRANSPORT

Complete the cycle path to Inverkeithing on the B981, through the wooded section at Craigs Plantation, beginning at Grid reference NT 14206 86493. This is also covered by NPF4 policy 23 (Health and Safety).

## 4. NPF4 / 13 SUSTAINABLE TRANSPORT

Install e-charging points on the current green space at Mowbray Gardens, grid reference NT 14465 88947.

## 5. NPF4 / 14 DESIGN, QUALITY AND PLACE

Fife Council must ensure that all local facilities and services are adequate to support the social and environmental impact of these developments.

## 6. NPF4 / 16 QUALITY HOMES

Ensure all new housing has renewable energy and water harvesting. Developments must include an appropriate social housing element.

## 7. NPF4 / 18 INFRASTRUCTURE FIRST

- 7.1 Multi-user underpass to rail halt and Halbeath park and ride. Potential start point NT 14349 89018.

This is an amendment to the Local Development Plan 2017.

- 7.2 New road from the Dunfermline Road to Windmill Knowe (grid reference NT 14216 88596) to relieve congestion at the school.

This is an amendment to the Local Development Plan 2017.

## 8. NPF4 / 21 PLAY, RECREATION AND SPORT

The Crossgates Community Council supports future community development of the park for recreation and leisure.

## 9. NPF4 / 23 HEALTH AND SAFETY

- 9.1 Multi user underpass to rail halt and Halbeath park and ride
- 9.2 20 mph for the Dunfermline Road between the crossroads and the roundabout. Grid reference NT 14255 88778
- 9.3 Improve drainage to reduce flooding on B981
- 9.4 Complete the cycle path to Inverkeithing
- 9.5 Safe pedestrian crossing of B925 at Mossgreen. Grid reference NT 14971 88803

21

## 10.NPF4 / 25 COMMUNITY WEALTH BUILDING

The Crossgates Community Council supports the development of the Primrose Sports and Community hub.



©Crown Copyright and database rights 2021 OS Licence no. 100057546

This drawing has been prepared to obtain statutory Local Authority Consent. All sizes to be confirmed on site prior to commencing work.

## NPF4 and the Plan4Fife link to community aspirations

### Climate Mitigation and Adaptation (NPF4/2):

- Increasing tree buffer zones and implementing sustainable urban drain-age align with Plan4Fife's objectives to enhance environmental sustainability and resilience to climate change.
- These actions contribute to creating healthier and more sustainable communities, which is a key outcome of Plan4Fife.

### Forestry, Woodland, and Trees (NPF4/6):

- Protecting The Taft Community Woodland and adding it to protected greenspace supports Plan4Fife's goals to enhance green infrastructure and increase access to natural spaces for recreational purposes.
- Preserving and expanding woodland areas also aligns with Plan4Fife's objectives to promote biodiversity and ecosystem health.

### Sustainable Transport (NPF4/13):

- Completing cycle paths and installing e-charging points align with Plan4Fife's objectives to improve sustainable transport infrastructure and encourage active travel.
- These initiatives contribute to reducing carbon emissions, enhancing air quality, and promoting healthier lifestyles, which are priorities for Plan4Fife.

### Design, Quality, and Place (NPF4/14):

- Ensuring that local facilities and services support the social and environmental impact of developments aligns with Plan4Fife's objectives to create high-quality, inclusive, and well-designed places.
- By Prioritising sustainable design principles, developments can enhance the quality of life for residents and contribute to vibrant and resilient communities.

### Quality Homes (NPF4/16):

- Requiring renewable energy and water harvesting in new housing developments supports Plan4Fife's objectives to promote energy-efficient and affordable housing options.

- Incorporating social housing elements in developments contributes to Plan4Fife's goals to address housing needs and ensure housing affordability for all residents.

### Infrastructure First (NPF4/18):

- Proposals for infrastructure improvements align with Plan4Fife's objectives to prioritize infrastructure investments that support sustainable development and enhance community connectivity.
- By addressing congestion issues and improving transportation infrastructure, these initiatives contribute to creating more accessible and livable communities.

### Play, Recreation, and Sport (NPF4/21):

- Community support for developing parks and recreational facilities aligns with Plan4Fife's objectives to enhance community well-being and promote active lifestyles.
- Investing in recreation and leisure opportunities contributes to creating vibrant and inclusive communities where residents can enjoy a high quality of life.

### Health and Safety (NPF4/23):

- Various proposals to improve public safety, such as pedestrian crossings and drainage improvements, align with Plan4Fife's objectives to create safe and healthy environments for residents.
- By addressing health and safety concerns, these initiatives contribute to enhancing the overall well-being and resilience of communities.

### Community Wealth Building (NPF4/25):

- Community support for developing sports and community hubs aligns with Plan4Fife's objectives to promote community empowerment and inclusive economic development.
- Investing in community facilities contributes to building social capital and fostering local resilience, which are key outcomes of Plan4Fife.

# WORKING TOGETHER FOR A BETTER PLACE FOR EVERYONE!

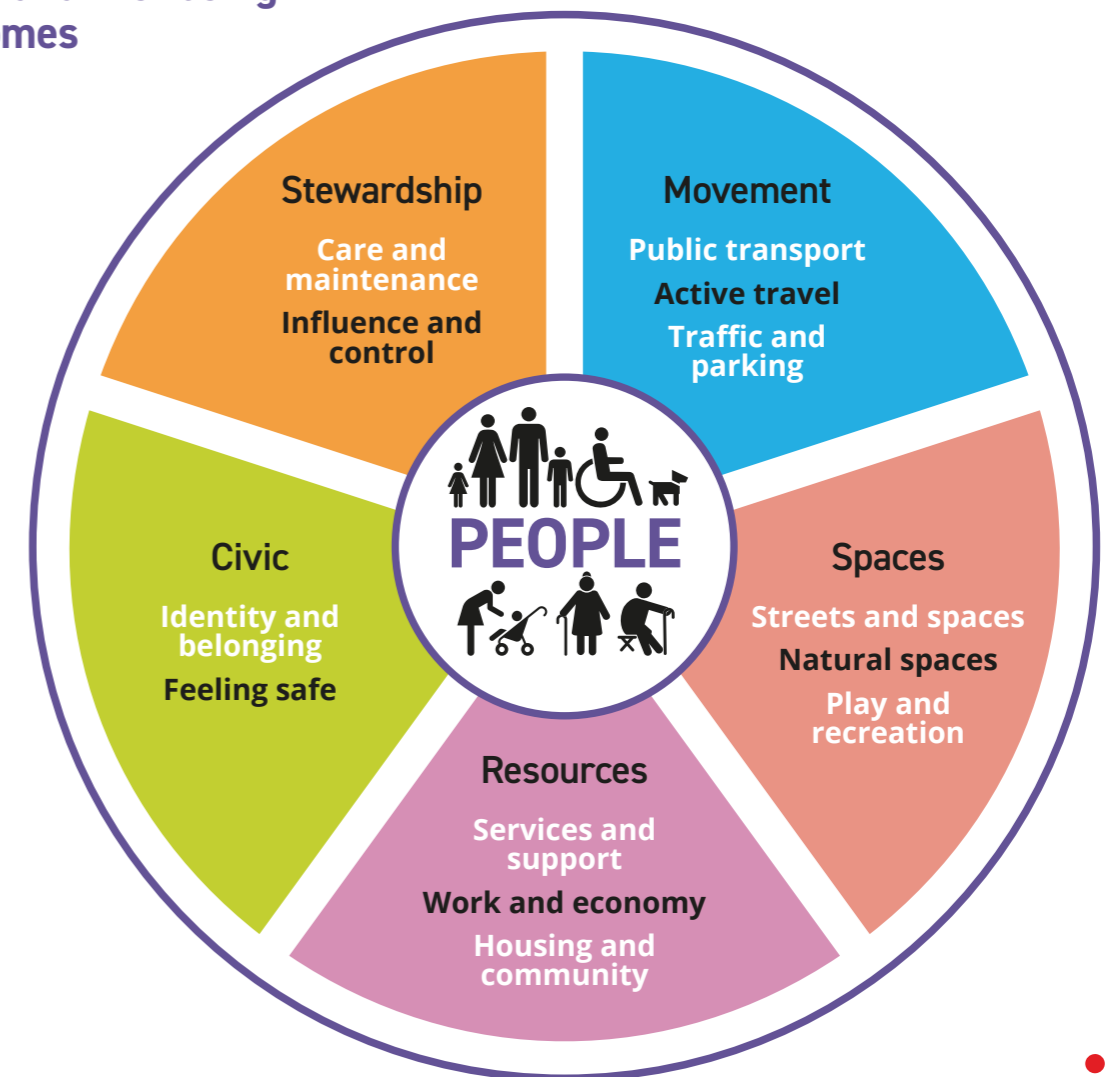
## Setting out the priorities for community action

The priorities for action that have been identified are set out under the Place and Wellbeing outcomes based on the Place Standard themes.

These themes are all the characteristics of a place that allow those who live, work and relax there to thrive.

The outcomes are for all stakeholders to take collaborative action on delivering in Crossgates and Mossgreen

## Place and Wellbeing outcomes



The principles of equality, net-zero emissions and sustainability underpin all of these themes, and all themes should be embedded in policy and action.

This theme highlights the priorities that emerged from community feedback and relate to aspects of place that include moving around, public transport and traffic and parking.

## PRIORITIES

**IMPROVE BUS SERVICE/ ROUTES**



## ACTIONS AND POTENTIAL PARTNERS

Continue to lobby for improved services.  
 Work with local transport providers to improve bus routes e.g. A bus that goes up the hill (Springhill Braes) to help all the elderly to get back up the brae. This should be a regular service and would actually serve all ages.  
 A bus service reinstated along the Crossgates to Mossmorran Road.

**IMPROVE AND DEVELOP FOOTPATHS AND CYCLE WAYS**



Work with partners such as Fife Council, Paths for All and Sustrans to take this initiative forward.  
 Path work to include completing the route to Inverkeithing.

**ADDRESS THE PARKING ISSUES**



Carry out a mapping exercise to identify potential additional parking in and around Crossgates.  
 Promotion locally to encourage less parking on pavements & double yellow lines.

**TRAFFIC MANAGEMENT E.G. SPEEDING**



Review Dunfermline road parking and reduce speed limit on Dumfermline road to 20mph.

**IMPROVE DISABILITY ACCESS/SAFER CROSSINGS/DROPPED KERBS**



Lobby Fife Council and local businesses for improved disability access:

- On pavements
- In premises
- To outside areas

Work with Fife Council, to ensure where needed, kerbs are dropped, crossings are made safe and access is improved for all residents.

**ROAD REPAIRS AND MAINTENANCE**



Work with Fife Council to create a work schedule to fix the pot holes and badly worn pavements that are trip hazards that badly need filled in to prevent possible accidents/falls.

**POTENTIAL PARTNERS**

Public transport providers including Stagecoach Buses, Fife Council, Paths for All and Sustrans, Local Councillors.

This theme highlights the priorities that emerged from community feedback and relate to aspects of place that include streets and spaces, natural space, play and recreation

## PRIORITIES

**A NEW SPORTS COMPLEX WITH COMMUNITY FOCUSED LEISURE FACILITIES**



## ACTIONS AND POTENTIAL PARTNERS

Work with Primrose Community Trust in:

- community engagement activities
- support fundraising
- the creation of a business plan
- work with partners to achieve this

**PROTECT, CONSERVE AND ENHANCE OUR NATURAL SPACES**



The Taft - Community woodlands and parks boundaries must be maintained, not encroached on by development.  
 Identify and map all local green spaces that should be protected for the community and lodged and mapped as part of the local place plan.

**CREATE OUTDOOR FACILITIES FOR PLAY AND RECREATION FOR ALL**



Work with the local community Fife Council and others to improve green space and upgrade existing facilities and access to greenspace, especially for disabled groups.  
 Improve public parks and preserve green space for future generations.

**IMPROVE THE PRIMARY SCHOOL PLAY-GROUND**

Work with Fife Council to explore options for improving the Primary School playground.

**MORE SEATING AREAS**



Provide more seating areas in public spaces, especially in parks, to ensure that people young and old can enjoy the outdoor environment.

**IMPROVE THE APPEARANCE OF THE VILLAGE CENTRE**

Work with partners and local businesses to explore options for creating a more attractive village centre.

**POTENTIAL PARTNERS**

Primrose Community Trust, Local community, Fife Council, local Football Clubs, Sports Scotland

This theme highlights the priorities that emerged from community feedback and relates to aspects of place that include facilities and services, work and local economy, housing and community and social interaction.

**PRIORITIES**

**ACCESS TO FULL RANGE OF HEALTH SERVICES FOR ALL**



**ACTIONS AND POTENTIAL PARTNERS**

Extend GP opening hours for working people.  
Commercial developers and Fife Council Planning authorities must ensure that Crossgates' NHS GP surgery will support estimated number of new residents.  
Explore opportunities for enhanced/improved services at local chemists.

**APPROPRIATE, AFFORDABLE AND EFFICIENT HOUSING**



More small council housing for the elderly who want to remain independent in their own home and remain in the villages they are familiar with.  
Disability friendly access to these.  
This type of support would benefit all of the generations in families that support older people or those with disabilities.  
New housing developments should incorporate eco-friendly elements such as solar panels and ground / air source heat pumps as standard.  
Any new housing development plans should include a minimum guaranteed percentage of 1-2 bedroom bungalows and ground floor flats suit-able for older people.

**MANAGE DEVELOPMENT RESPONSIBLY**



Possible adverse physical impact (e.g. potential flooding, noise, congestion, overall environmental impact) of new housing developments on existing natural and built environment must be acknowledged and plans must include mitigation of these impacts.

**MORE TRAINING AND EMPLOYMENT OPPORTUNITIES LOCALLY**



Work with partners to maximise training opportunities locally.  
Make links with the new Dunfermline Learning Campus.

**POTENTIAL PARTNERS**

Local community, Fife Council, NHS, Local Councillors, Retailers, Local Football Clubs, local Housing Associations and Developers, Fife Voluntary Action and other training providers, Dunfermline Learning Campus.

This theme highlights the priorities that emerged from community feedback and relate to aspects of your place that include identity, belonging and feeling safe.

**PRIORITIES**

**AFFORDABLE EVENTS/ ACTIVITIES FOR ALL AGE GROUPS, ABILITIES AND CULTURES**



**ACTIONS AND POTENTIAL PARTNERS**

Work with Fife Council CLD  
Promote what's already happening to encourage more local involvement.

**MORE SOCIAL SPACES**



We need a proper sit down café for families to enjoy.  
A local restaurant / bar to socialise locally.

**INCREASE PROMOTION OF WHAT'S ON LOCALLY E.G. SUPPORT/ ACTIVITIES/GROUPS**



Create a community calendar of existing community events and promote these locally through a Crossgates Newsletter.  
Support the tradition of the Crossgates Gala celebrations.  
Groups should collaborate and work together sharing information and resources.

**MORE POLICE PRESENCE AND INITIATIVES TO REDUCE ANTI-SOCIAL BEHAVIOUR**



Work with Police Scotland to increase visible local policing in the area.  
Promote youth work/organisations in the community to give young people more opportunities and places they can identify as their spaces.

**SUPPORT AND DEVELOP COMMUNITY GROWING SPACES**



Promote existing growing initiatives and explore the need / location for further growing sites.

**ACCESSIBLE RECYCLING FACILITIES NEEDED**



Work with Fife Council on this

**POTENTIAL PARTNERS**

Police Scotland and, Local Councillors, Fife Council CLD, NHS, Fife Voluntary Action, C&MCC

This theme highlights the priorities that emerged from community feedback and relates to aspects of place that include care and maintenance as well as influence and sense of control.

## PRIORITIES

**CLEANER STREETS  
E.G. LITTER AND  
DOG FOULING**



**MORE REGULAR  
ROAD MAINTENANCE**



**CELEBRATE,  
SUPPORT AND  
ENCOURAGE  
VOLUNTEERING**



**MAKE CROSSGATES AND  
MOSSGREEN DEMENTIA  
FRIENDLY**



**PROTECT, PRESERVE  
AND CONSERVE  
OUR HERITAGE**



## POTENTIAL PARTNERS

## ACTIONS AND POTENTIAL PARTNERS

Work with the school to host annual campaigns to reduce litter and dog fouling.

Working with Fife Council to identify areas of roads in need of repair.

Recruiting volunteers to deliver services is essential to the smooth running of all organisations.

A central list, setting out the variety of vol-unteering for all Crossgates groups would ensure a fair distribution of volunteers and match them to the appropriate volunteering opportunity/organisation.

Promote a better understanding of dementia and an appreciation of the condition.

Work with organisations that specialise in Dementia to promote and produce a local leaflet for shops, businesses, residents with details of where they can get help or advice if they meet someone who has dementia that needs support (e.g. local numbers for GP/carers organisations) in their community.

Install appropriate interpretation to raise awareness of the natural history and industrial heritage of Crossgates.

Fife Council, NHS, Fife Voluntary Action, local community, Local Councillors, C&MCC

We seek to work in partnership to make real progress and invite residents, local groups and businesses, local authority departments and outside agencies to work together with us. If you can help with any of these issues and help improve our community please get in touch with Crossgates and Mossgreen Community Council.

Live well in Crossgates and Mossgreen.

Our confident, engaged community bursts with potential.

Celebrating a strong community spirit, we offer diverse activities for everyone.

Residents feel empowered to contribute and create positive change.

We prioritise safety, happiness, and community pride.

Our tidy, attractive environment and improved traffic management enhance our sense of well-being.

We're a healthy, family-friendly community, with clean, green spaces and accessible parks and woodland.

Well-connected with reliable transport links, we support residents at all stages of life.

Investing in local businesses and services, we ensure everyone feels cared for and supported.



# MAKING THE LINKS TO THE FIFE COMMUNITY PARTNERSHIP PLAN

## The Plan for Fife

### Crossgates & Mossgreen Local Place Plan and Community Action Priorities

Our Crossgates & Mossgreen Local Place Plan and its community action priorities comes from a bottom up approach. It sits together with the Plan for Fife to encourage a joined up approach to community development and improved service provision. This plan represents the views and aspirations of local people and can be used to help encourage partnership working. It promotes opportunities for local groups, public agencies and service providers to work together to improve the quality of life for the people of Crossgates and Mossgreen.

The Plan for Fife Key Themes	Community Action Priorities linked to Place and Wellbeing Outcomes
<p><b>OPPORTUNITIES FOR ALL</b></p> <p>Creating a level playing field where everyone has a fair chance to succeed and contribute to the economy.</p>	<p><b>Movement and Resources</b></p> <p>Well connected with path networks for active travel and public transport that serves the public need as well as appropriate services and support.</p>
<p><b>THRIVING PLACES</b></p> <p>Creating communities where residents can flourish and lead fulfilling lives across various dimensions, including social, economic, environmental, and cultural aspects.</p>	<p><b>Spaces and Movement</b></p> <p>A place with quality green and natural space for play and recreation. Well maintained roads with parking to meet community and business needs. Well Connected with path networks for active travel and public transport that serves the needs of everyone.</p>
<p><b>COMMUNITY LED SERVICES</b></p> <p>Initiatives that are driven, developed, and delivered by local communities to address specific needs or challenges within their area.</p>	<p><b>Civic and Stewardship</b></p> <p>A well maintained and cared for community where people can play an influential role in how their community's needs are met for residents of all ages and abilities, giving them a sense of ownership and belonging.</p>
<p><b>INCLUSIVE GROWTH AND JOBS</b></p> <p>Fostering economic development while ensuring that the benefits are shared equitably among all segments of society.</p>	<p><b>Resources</b></p> <p>A community that is well provided for with facilities and services to meet the needs everyone including access to local work and training opportunities to enable people to secure an independent lifestyle.</p>

We seek to work in partnership to make real progress and invite residents, local groups and businesses, local authority departments and outside agencies to work together with us. If you can help with any of these issues and help improve our community please get in touch with Crossgates and Mossgreen Community Council.



### Monitoring, Review and re-setting

The success of this Local Place Plan and community action priorities depends on people in our community getting together to identify and address both the opportunities and threats the community faces.

For its part, the Crossgates and Mossgreen Community Council commits itself to constantly monitoring the plan's progress and, on an annual basis, to organise a public meeting with an agenda which provides for the reporting of progress, or lack of it, and the re-setting of priorities and targets where circumstances have changed.

### Acknowledgements and thanks!

We would like to recognize the support that has been given from the following agencies and organisations who have played their part in one way or another in helping create the Crossgates and Mossgreen Local Place Plan:

- Crossgates and Mossgreen Community Council
- <https://www.facebook.com/people/Crossgates-and-Mossgreen-Community-Council/100079522333693/>
- Coalfields Regeneration Trust <http://crtconnect.org.uk/>
- Fife Council <https://www.fife.gov.uk/>
- Improvement Services <https://www.improvementservice.org.uk/>
- Green Map System <https://www.greenmap.org/>
- Place and Wellbeing Alliance <https://www.ourplace.scot/>
- Scottish Government <https://www.gov.scot/publications/national-planning-framework-4/>



## Reasons for Amendments to Fife Local Development Plan 2017

### Supporting statements for proposed amendments to the 2017 Fife Local Development Plan

Proposition 1.1	Increase Tree Buffer Zone to Reduce Pollution and Noise
Proposition 1.2	Create Sustainable Urban Drainage System (SUDS) on Site CRO002
Proposition 2	Add The Taft Community Woodland to Protected Greenspace
Proposition 7.1	Multi-User Underpass to proposed Rail Halt and Halbeath Park and Ride (Potential Start Point NT 14349 89018)
Proposition 7.2	New Road from Dunfermline Road to Windmill Knowe (Grid Reference NT 14216 88596) to Relieve Congestion at the School

### Proposition 1.1: Increase Tree Buffer Zone to Reduce Pollution and Noise

#### Introduction

This supporting statement is submitted in support of the proposed amendment to the Local Development Plan 2017 for Crossgates and Mossgreen in Fife. The amendment focuses on increasing the tree buffer zone to reduce pollution and noise. This initiative aligns with the National Planning Framework 4 (NPF4) policies on climate mitigation and adaptation, biodiversity, and natural spaces.

#### Background and Context

The existing infrastructure in Crossgates and Mossgreen requires enhancements to better address climate change, environmental sustainability, and community well-being. The proposed increase in the tree buffer zone is a critical measure to mitigate pollution, manage noise levels, and enhance biodiversity.

#### Community Engagement and Support

Community engagement activities, including surveys, public meetings, and consultations, have highlighted strong support for increased environmental protection measures. Key findings include:

- **Environmental Concerns:** Residents have expressed concerns about air pollution and noise levels in the area.
- **Support for Green Initiatives:** There is a broad consensus on the need for more green spaces to enhance the local environment and community health.
- **Endorsement from Local Groups:** Environmental groups, local businesses, and community organisations have shown strong support for the proposed measures, recognizing their long-term benefits.

#### Justification for the Amendment

1. **Climate Mitigation and Adaptation:** Increasing the tree buffer zone directly contributes to climate mitigation by absorbing pollutants and enhancing the resilience of the local environment to climate impacts.

2. **Pollution and Noise Reduction:** The expanded tree buffer zone will act as a natural barrier, absorbing pollutants and reducing noise levels, thus improving the quality of life for residents.
3. **Biodiversity and Natural Spaces:** The proposal aligns with NPF4 policies 3 and 4 by enhancing biodiversity and preserving natural spaces, contributing to a healthier, more sustainable environment.

#### Alignment with NPF4 Policies

- **NPF4 Policy 2: Climate Mitigation and Adaptation:** The proposed measures address the need for infrastructure that mitigates climate impacts and adapts to changing environmental conditions.
- **NPF4 Policy 3: Biodiversity:** Increasing the tree buffer zone will enhance local biodiversity, providing habitats for various species and contributing to ecological balance.
- **NPF4 Policy 4: Natural Spaces:** Creating and preserving natural spaces through these initiatives promotes environmental sustainability and community well-being.

#### Technical Considerations

Preliminary assessments indicate the feasibility of increasing the tree buffer zone. Detailed planning and design will ensure that these measures meet all regulatory and environmental standards. Key technical considerations include:

- **Tree Buffer Zone:** Selection of appropriate tree species and planting strategies to maximize pollution absorption and noise reduction.
- **Environmental Impact:** Comprehensive environmental impact assessments to ensure minimal disruption to existing ecosystems and maximum ecological benefits.

#### Conclusion

The proposed amendment to the Local Development Plan 2017 to increase the tree buffer zone is essential for addressing climate mitigation and adaptation, reducing pollution and noise, and enhancing biodiversity. These measures align with NPF4 policies on biodiversity and natural spaces,

promoting a sustainable, resilient, and healthy community. We urge the planning authorities to approve this amendment for the long-term benefit of Crossgates and Mossgreen residents and the environment.

## Supporting Statement for Proposed Amendment to the Local Development Plan 2017

### Proposition 1.2: Create Sustainable Urban Drainage System (SUDS) on Site CRO002

#### Introduction

This supporting statement is submitted in support of the proposed amendment to the Local Development Plan 2017 for Crossgates and Mossgreen in Fife. The amendment focuses on creating a Sustainable Urban Drainage System (SUDS) on site CRO002 to prevent flooding.

#### Background and Context

The existing infrastructure in Crossgates and Mossgreen requires enhancements to better address stormwater management, reduce flood risk, and improve environmental sustainability. Site CRO002 has been identified as a critical area for implementing measures to manage stormwater effectively and enhance local biodiversity.

#### Community Engagement and Support

Community engagement activities, including surveys, public meetings, and consultations, have highlighted strong support for flood prevention measures and sustainable water management systems. Key findings include:

- **Flood Risk Concerns:** Residents expressed concerns about the risk of flooding in the area and the need for effective stormwater management solutions.
- **Support for Sustainable Infrastructure:** There is a broad consensus on the need for sustainable infrastructure to enhance environmental resilience and community health.

#### ■ Endorsement from Local Groups:

Environmental groups, local businesses, and community organisations have shown strong support for the proposed SUDS, recognizing their long-term benefits.

#### Justification for the Amendment

- 1. Flood Prevention:** The SUDS on site CRO002 will effectively manage stormwater, preventing flooding and reducing the risk of water damage to properties and infrastructure.
- 2. Water Quality Improvement:** SUDS help filter pollutants from runoff before it enters watercourses, improving local water quality.
- 3. Biodiversity and Natural Spaces:** The proposal aligns with NPF4 policies 3 and 4 by enhancing biodiversity and preserving natural spaces, contributing to a healthier, more sustainable environment.

#### Alignment with NPF4 Policies

- **NPF4 Policy 2: Climate Mitigation and Adaptation:** The proposed SUDS addresses the need for infrastructure that mitigates climate impacts and adapts to changing environmental conditions.
- **NPF4 Policy 3: Biodiversity:** Implementing SUDS will enhance local biodiversity, providing habitats for various species and contributing to ecological balance.
- **NPF4 Policy 4: Natural Spaces:** Creating and preserving natural spaces through SUDS initiatives promotes environmental sustainability and community well-being.

#### Technical Considerations

Preliminary assessments indicate the feasibility of implementing SUDS on site CRO002. Detailed planning and design will be required to ensure that these measures meet all regulatory and environmental standards. Key technical considerations include:

- **SUDS Design:** Engineering studies to design an effective drainage system that manages stormwater and prevents flooding, incorporating features like retention basins, permeable surfaces, and swales.

#### ■ Water Quality and Ecosystem Benefits:

Ensuring the design includes features that filter pollutants and provide habitats for wildlife.

- **Environmental Impact:** Comprehensive environmental impact assessments carried out to ensure minimal disruption to existing ecosystems and maximum ecological benefits.

#### Conclusion

The proposed amendment to the Local Development Plan 2017 to create a Sustainable Urban Drainage System on site CRO002 is essential for addressing flood prevention, improving water quality, and enhancing biodiversity. These measures align with NPF4 policies on climate mitigation, biodiversity, and natural spaces, promoting a sustainable, resilient, and healthy community. We urge the planning authorities to approve this amendment for the long-term benefit of Crossgates and Mossgreen residents and the environment.

## Supporting Statement for Proposed Amendment to the Local Development Plan 2017

### Proposition 2: Add The Taft Community Woodland to Protected Greenspace

#### Introduction

This supporting statement is submitted in support of the proposed amendment to the Local Development Plan 2017 for Crossgates and Mossgreen in Fife. The amendment proposes adding The Taft Community Woodland to the list of protected greenspaces. This initiative aligns with the National Planning Framework 4 (NPF4) policies on forestry, woodland, and trees, and also supports policies on green belts, play, recreation, and sport, health and safety, and natural spaces.

#### Background and Context

The Taft Community Woodland is a valuable natural asset in Crossgates and Mossgreen, providing ecological, recreational, and health benefits to the local community. Protecting this woodland as a

designated greenspace ensures its preservation for future generations, enhances biodiversity, and supports community well-being.

#### Community Engagement and Support

Extensive community engagement activities, including surveys, public meetings, and consultations with local residents and stakeholders, have demonstrated strong support for the protection of The Taft Community Woodland. Key findings from the community engagement include:

- **Value of Natural Spaces:** Residents highly value The Taft Community Woodland for its natural beauty, recreational opportunities, and environmental benefits.
- **Support for Conservation:** There is widespread agreement on the need to protect and preserve local woodlands to maintain ecological balance and enhance quality of life.
- **Community and Health Benefits:** Local health organizations, schools, and community groups have expressed strong support for the proposal, citing the positive impact of greenspaces on physical and mental health.

#### Justification for the Amendment

- 1. Forestry, Woodland, and Trees:** Adding The Taft Community Woodland to protected greenspace aligns with NPF4 Policy 6, which emphasizes the importance of conserving and enhancing woodlands and trees for their ecological, social, and economic benefits.
- 2. Green Belts:** This proposal supports NPF4 Policy 8 by contributing to the preservation and enhancement of green belts, maintaining the rural character of the area, and preventing urban sprawl.
- 3. Play, Recreation, and Sport:** The woodland offers ample opportunities for play, recreation, and outdoor sports, aligning with NPF4 Policy 21. Protecting this space ensures that these activities can continue and expand, benefiting local residents of all ages.
- 4. Health and Safety:** The woodland provides a natural environment that supports physical and mental health, as emphasized in NPF4 Policy 23.

Access to natural spaces is crucial for promoting community health and well-being.

- 5. Natural Spaces:** This proposal aligns with NPF4 Policy 4 by preserving natural spaces that support biodiversity, provide ecological services, and enhance the overall environmental quality of the area.

#### Alignment with NPF4 Policies

- **NPF4 Policy 4: Natural Spaces:** The proposal preserves a vital natural space, enhancing biodiversity and offering ecological, educational, and recreational benefits.
- **NPF4 Policy 6: Forestry, Woodland, and Trees:** Protecting The Taft Community Woodland ensures the conservation of vital woodland resources, supporting biodiversity, carbon sequestration, and recreational opportunities.
- **NPF4 Policy 8: Green Belts:** By designating the woodland as protected greenspace, the proposal helps maintain the integrity of green belts and prevent urban encroachment.
- **NPF4 Policy 21: Play, Recreation, and Sport:** The woodland provides a natural setting for outdoor activities, promoting active lifestyles and community engagement.
- **NPF4 Policy 23: Health and Safety:** Access to greenspaces like The Taft Community Woodland is essential for supporting community health, reducing stress, and providing safe, natural environments for recreation.

#### Technical Considerations

Protecting The Taft Community Woodland as a designated greenspace involves minimal technical challenges, as the area is already a well-maintained natural habitat. Key considerations include:

- **Conservation Management:** Developing a conservation management plan to ensure the long-term health and sustainability of the woodland.
- **Community Involvement:** Engaging the community in stewardship activities to foster a sense of ownership and responsibility for the woodland.

- **Funding and Resources:** Identifying funding sources and resources for ongoing maintenance and conservation efforts, including potential grants and community contributions.

### Conclusion

Adding The Taft Community Woodland to the list of protected greenspaces is a crucial amendment to the Local Development Plan 2017. This initiative aligns with NPF4 policies on forestry, green belts, recreation, health, and natural spaces, ensuring the preservation of a valuable natural asset for Crossgates and Mossgreen. We urge the planning authorities to approve this amendment to safeguard the environmental, recreational, and health benefits provided by The Taft Community Woodland for current and future generations.

NPF4 /18 Infrastructure first 1: Multi-user underpass to rail halt and Halbeath park and ride. Potential start point NT 14349 89018. This is an amendment to the Local Development Plan 2017.

## Supporting Statement for Proposed Amendment to the Local Development Plan 2017

### Proposition 7.1: Multi-User Underpass to proposed Rail Halt and Halbeath Park and Ride (Potential Start Point NT 14349 89018)

#### Introduction

This supporting statement is submitted in support of the proposed amendment to the Local Development Plan 2017 for Crossgates and Mossgreen in Fife. The amendment focuses on the construction of a multi-user underpass to enhance connectivity to the rail halt and Halbeath Park and Ride. This initiative aligns with the National Planning Framework 4 (NPF4) Policy 18 on putting infrastructure first.

#### Background and Context

Improving transportation infrastructure is critical to enhancing mobility, reducing congestion, and

promoting sustainable travel options for the residents of Crossgates and Mossgreen. The proposed multi-user underpass, starting at grid reference NT 14349 89018, will provide a safe, efficient, and accessible route for pedestrians, cyclists, and other non-motorized users, linking the community to key transport hubs.

### Community Engagement and Support

Extensive community engagement activities, including surveys, public meetings, and consultations with local residents and stakeholders, have demonstrated strong support for the proposed underpass. Key findings from the community engagement include:

- **Demand for Improved Connectivity:** Residents expressed a strong need for better access to public transport facilities, including the rail halt and Halbeath Park and Ride.
- **Support for Sustainable Transport:** There is widespread agreement on the need to promote sustainable transport options, such as walking and cycling, to reduce traffic congestion and environmental impact.
- **Endorsement from Local Organisations:** Local businesses, schools, and community groups have expressed support for the proposal, recognizing the benefits of enhanced connectivity and reduced travel times.

### Justification for the Amendment

1. **Infrastructure First:** The construction of a multi-user underpass prioritizes infrastructure development that supports sustainable growth and enhances the quality of life for residents, aligning with NPF4 Policy 18.
2. **Improved Accessibility:** The underpass will provide a safe and direct route for pedestrians and cyclists, improving access to public transport and encouraging active travel.
3. **Traffic Congestion Reduction:** By facilitating greater use of public transport and non-motorised travel modes, the underpass will help reduce traffic congestion on local roads.
4. **Environmental Benefits:** Promoting sustainable transport options supports efforts to reduce

carbon emissions and improve air quality, contributing to climate mitigation goals.

5. **Community Health and Well-being:** Enhanced connectivity and opportunities for active travel will have positive impacts on public health, encouraging physical activity and reducing reliance on car travel.

### Alignment with NPF4 Policies

- **NPF4 Policy 13: Sustainable Transport:** Promoting sustainable transport modes, reducing the need for car travel, and supporting the development of active travel infrastructure.
- **NPF4 Policy 18: Infrastructure First:** Prioritising infrastructure development that supports sustainable, inclusive growth and enhances community connectivity.
- **NPF4 Policy 23: Health and Safety:** Enhancing public health by providing safe, accessible routes for walking and cycling, encouraging physical activity and reducing traffic-related risks.

### Technical Considerations

Detailed planning and design will be required to ensure the project meets all regulatory and safety standards. Key technical considerations include:

- **Route Planning:** Designing the underpass to provide a direct and accessible connection between the community, the rail halt, and Halbeath Park and Ride.
- **Safety Measures:** Incorporating lighting, surveillance, and emergency features to ensure the safety and security of users.
- **Environmental Impact:** Conducting environmental impact assessments to mitigate potential adverse effects on the surrounding area and ensure minimal disruption during construction.
- **Cost and Funding:** Developing a comprehensive cost estimate and identifying potential funding sources, including local government grants, transport infrastructure funds, and community contributions.

### Conclusion

The construction of a multi-user underpass to the rail halt and Halbeath Park and Ride is a vital amendment to the Local Development Plan 2017. This initiative prioritises infrastructure development, enhancing connectivity, promoting sustainable transport, and improving community health and well-being and most importantly, deals with the current high accident risk and dangers that exist for local people who travel to the park and ride on foot. We urge the planning authorities to approve this amendment to support the long-term sustainable development of Crossgates and Mossgreen and provide residents with improved access to key transport hubs.

## Supporting Statement for Proposed Amendment to the Local Development Plan 2017

### Proposition 7.2 : New Road from Dunfermline Road to Windmill Knowe (Grid Reference NT 14216 88596) to Relieve Congestion at the School

#### Introduction

This supporting statement is submitted in support of the proposed amendment to the Local Development Plan 2017 for Crossgates and Mossgreen in Fife. The proposal involves the construction of a new road from Dunfermline Road to Windmill Knowe to alleviate traffic congestion around the local school, thereby enhancing safety and accessibility for students, parents, and staff.

#### Background and Context

The current road infrastructure around the school in Crossgates and Mossgreen has been identified as insufficient to handle peak traffic volumes, particularly during school drop-off and pick-up times. This has led to significant congestion, posing safety risks to pedestrians, especially children, and causing delays and inconvenience for local residents and commuters.

## Community Engagement and Support

Extensive community engagement activities have been conducted to gather input and feedback on the proposed amendment. Surveys, public meetings, and consultations with local residents, parents, school staff, and other stakeholders have demonstrated strong support for the new road. The key findings from the community engagement are as follows:

- **Safety Concerns:** A significant majority of respondents expressed concerns about the safety of children due to the high volume of traffic around the school.
- **Traffic Flow Improvement:** There is widespread agreement that a new road would significantly improve traffic flow and reduce congestion during peak hours.
- **Local Support:** The school administration and local businesses have indicated their support for the proposal, citing the benefits of improved accessibility and reduced traffic-related issues.

## Technical Considerations

### Justification for the Amendment

1. **Enhanced Safety:** The new road will provide a safer environment for schoolchildren by reducing traffic congestion and improving pedestrian access around the school premises.
2. **Improved Traffic Management:** By creating an alternative route, the proposed road will distribute traffic more evenly, reducing bottlenecks and improving overall traffic flow in the area.
3. **Community Benefits:** The reduction in congestion will not only benefit the school but also enhance the quality of life for local residents by decreasing noise and air pollution and increasing road safety.
4. **Alignment with Strategic Objectives:** This proposal aligns with the broader strategic objectives of the Local Development Plan, which include improving infrastructure, promoting safe and accessible transport, and enhancing community well-being.

## Alignment with NPF4 Policies

1. **NPF4 Policy 13: Sustainable Transport:** Prioritising the construction of essential infrastructure to support safer routes to school. By including pathways for pedestrians and cyclists, the project supports sustainable travel and transport options, encouraging active travel and reducing reliance on cars.
2. **NPF4 Policy 18: Infrastructure First:** Prioritising the construction of essential infrastructure to support community development and well-being. The new road exemplifies this by addressing critical traffic congestion and safety issues.
3. **NPF4 Policy 23: Health and Safety:** Enhancing public health and safety by reducing traffic congestion and providing safer routes for pedestrians and cyclists, aligning with the policy's goal of creating safe and healthy environments.

## Technical Considerations

We would suggest that the proposed road is feasible. Detailed engineering studies would be required to be conducted to ensure the road meets all safety and regulatory standards including route planning and environmental impact.

## Conclusion

The construction of a new road from Dunfermline Road to Windmill Knowe is a necessary and beneficial amendment to the Local Development Plan 2017 for Crossgates and Mossgreen. It addresses critical safety concerns, improves traffic management, and aligns with the community's needs and strategic objectives. We urge the planning authorities to approve this amendment to enhance the quality of life for residents and ensure a safer, more efficient transport infrastructure around the school.



# MAKING IT HAPPEN

To find out more information about this plan or to volunteer with any projects please contact by email Crossgates and Mossgreen Community Council: [crossgatescommcouncil@gmail.com](mailto:crossgatescommcouncil@gmail.com)

A big thank you to everyone in our local communities who helped make this Crossgates and Mossgreen Local Place Plan possible.



Design: Arken Creative  
LPP Maps: Colour & Light Ltd.  
Print: Armstrong Printing (Alloa) Ltd.  
Photography: David Wardle | Enid Trevett



**Coalfields  
Regeneration  
Trust**

BUILDING PROSPERITY & OPPORTUNITY

The Coalfields Regeneration Trust  
Registered Charity No.1074930 in England and Wales  
A Charity Registered in Scotland No SCO39277



For a PDF version of  
this community action  
plan and for further  
information visit

[www.crtconnect.org.uk](http://www.crtconnect.org.uk)