



KINCARDINE

LOCAL PLACE PLAN 2024



- 3 FOREWORD
- 4 INTRODUCTION AND BACKGROUND
- 5 OUR COMMUNITY NOW INCLUDING LPP BOUNDARY MAP
- 10 COMMUNITY CONSULTATION
- 12 PICTURE MY PLACE - RESULTS OF THE PLACE STANDARD ASSESSMENT
- 13 KINCARDINE LOCAL PLACE PLAN
- 14 STATEMENT BY TOM ARTHUR MSP ON THE FOURTH NATIONAL PLANNING FRAMEWORK (NPF4)
- 15 LOCAL PLACE PLAN PROPOSITIONS
- 16 LPP MAP
- 18 NPF4 AND PLAN4FIFE
- 20 PLACE AND WELLBEING OUTCOMES
- 21 COMMUNITY VISION FOR THE FUTURE
- THEMES AND PRIORITIES FOR COMMUNITY ACTION:
- 22 THEME 1 | MOVEMENT
- 23 THEME 2 | SPACES
- 24 THEME 3 | RESOURCES
- 26 THEME 4 | CIVIC
- 27 THEME 5 | STEWARDSHIP
- 28 ENVIRONMENTAL ISSUES
- 30 MAKING THE LINKS TO THE FIFE LOCAL OUTCOME IMPROVEMENT PLAN (PLAN 4 FIFE)
- 31 ACKNOWLEDGEMENTS AND MAKING IT HAPPEN
- 32 APPENDIX



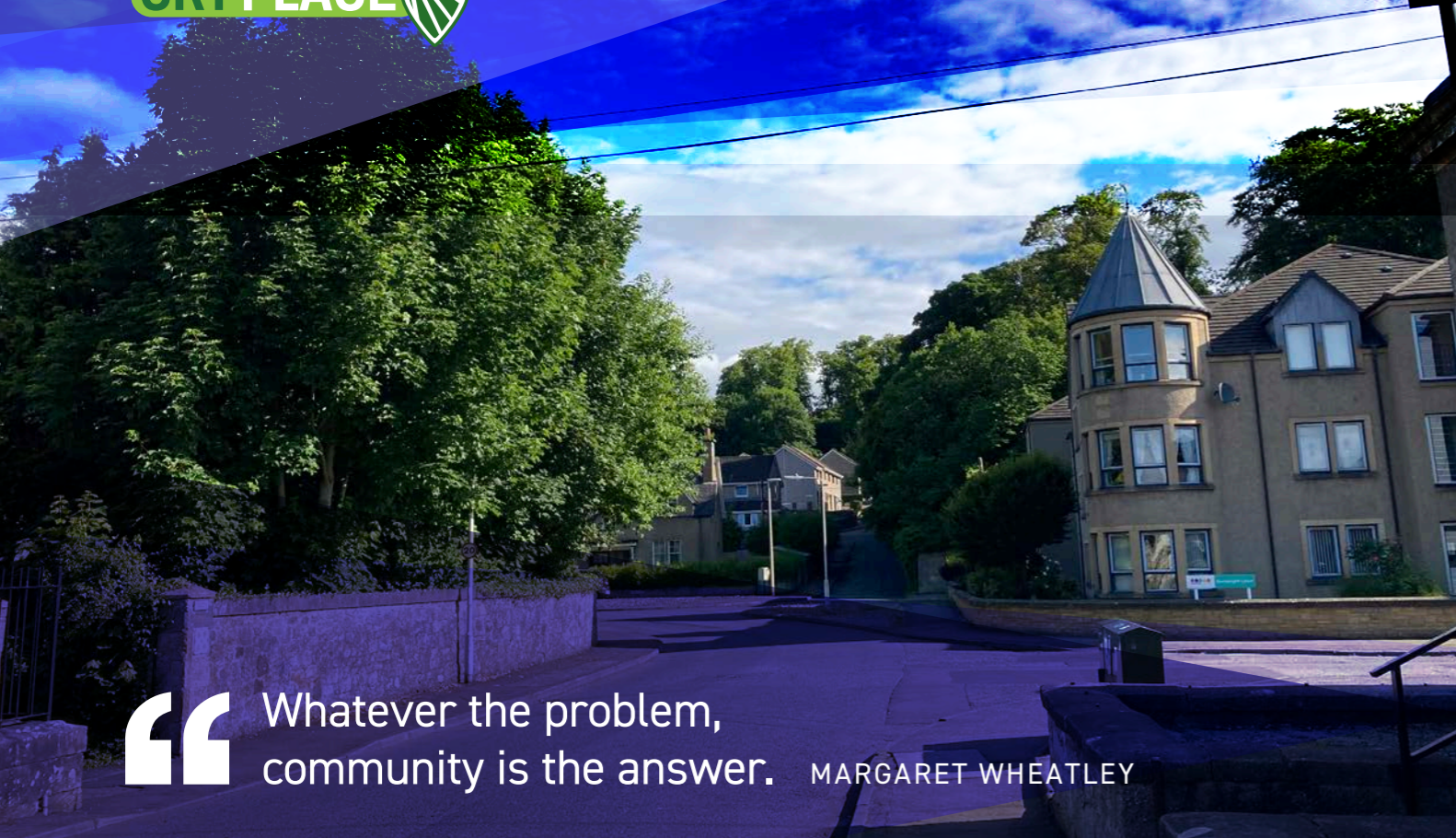
We are pleased to present one of the first Local Place Plans to be prepared in Fife. The Kincardine Local Place Plan has been prepared by following the outcomes of the consultation and workshops that took place in April 2024 supported by the Coalfields Regeneration Trust (CRT). CRT have since worked with the Kincardine Community Council and the Kincardine Community Association Ltd to produce this Local Place Plan.

Our approach aligns with the aims of the Fourth National Planning Framework (NPF4) and it has been used as a guide when framing the Kincardine Local Place Plan. Its production has been greatly assisted by the use of The CRT Place Standard Toolkit and NPF4 mapping resource to gather the content for this plan.

Thanks go to Green Map System for their support in providing their resources to help us make the spatial mapping as accessible as possible using icons to identify policy and place.

The Kincardine Local Place Plan sets out a future vision for how our community could be improved and the actions required to help achieve this.

The local community have also identified community action priorities that they want to see happen. These are set out under the five themes of the Improvement Service 'Place and Wellbeing Outcomes' which are designed to improve Scotland's wellbeing and reduce inequality.



“ Whatever the problem, community is the answer. MARGARET WHEATLEY

CRT Place is a place based approach to support the regeneration and creation of sustainable and resilient communities in Scotland’s former coal mining communities.

We are using a range of methods to capture people’s views of where they live, as it is now, and how they see the future in their local community. This approach promotes dialogue and cooperation between community members, partners and outside agencies. Any type of community led plan is always a work in progress, however this approach serves to provide concrete steps to help shape local communities going forward. The aim of this is that future generations can thrive in changing times so that no one is left behind.

Background

Kincardine community members produced the first Kincardine Community Action Plan that ran from 2014-2019 with support from Coalfields Regeneration Trust. Following on from this, in 2020, the Go Forth Kincardine Charrette report was produced, again with the support of Coalfields Regeneration Trust.

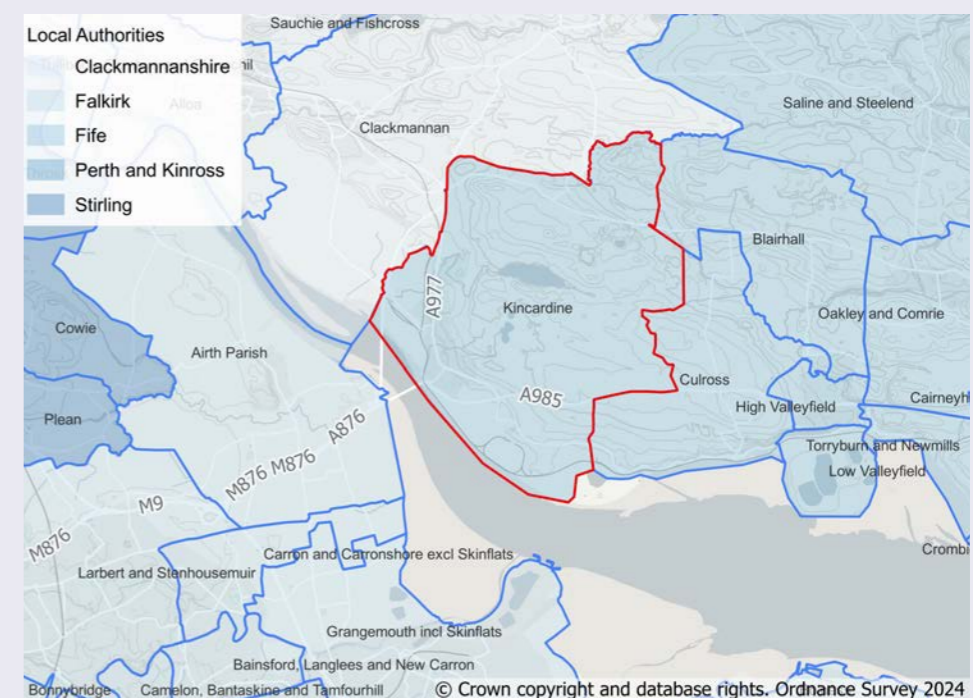
The wide ranging financial effects of the Covid pandemic meant that some of the key proposals did not bear fruit. However, with the introduction of Local Place Plans, Kincardine once again has an opportunity to build on the good work that has been carried out in the past and, with the benefit of additional engagement, the community have been able to produce a spatial vision for the area.



Location

Kincardine is located adjacent to two significant River Forth road crossings. The town has historically been host to two large scale coal-fired power stations which are both now decommissioned.

The Kincardine community council area has engaging historical narratives from its history of seafaring, shipbuilding and mining and is currently home to the headquarters of Police Scotland.



Kincardine Community Council Boundary outline in red. This is also the boundary for the Local Place Plan.



Population

Total population for Kincardine was

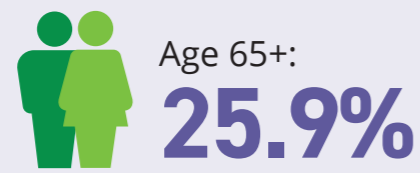
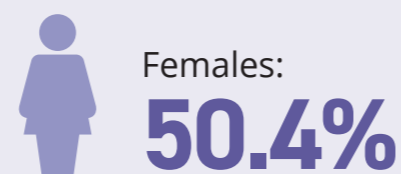
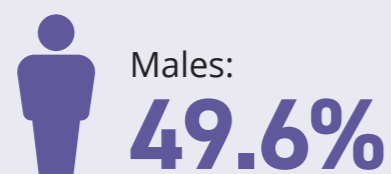
3,220

based on 2021 Mid-Year Population Estimates, National Records of Scotland.

Source: www.nrscotland.gov.uk

The percentage breakdown

The male population is 1,597, while the female population is 1,623. Children (0-15 years) account for 448, working-age individuals (16-64 years) are 1,938, and older adults (65+ years) make up 835 of the population.



Housing

The housing market in Kincardine offers a range of options, including detached houses, semi-detached houses, flats, and apartments.

1,624

households in Kincardine (2022) with **67.5%** Owner Occupier, **18.1%** Social rented **10.5%** Private rented.

Poverty and Deprivation:

- Child poverty (15 and under) in relative poverty: **15.9%**
- Working-age employment deprived: **7.8%**
- Total population income deprived: **9.5%**

Education and Skills

Kincardine has one Primary School with a school roll of 177 and a pre-school nursery roll of 37. High school age pupils would normally attend Queen Anne High School in Dunfermline.

Fife College in Dunfermline can offer a wide range of courses for students going on to further education with over 40 specialist areas of skills development.

Forth Valley College also offers a wide range of courses and has campuses in Falkirk, Stirling and Alloa.



Kincardine Health and Care

Kincardine Health Centre provides various clinics for conditions such as asthma, diabetes, CHD /Hypertension and smoking cessation.

Nurse services include district nurse and practice nurse.

Children's services – baby clinic, child hearing, child immunisations, child assessment.

Other health services include Podiatry, Physiotherapy, Health Visitors and Phlebotomist.

There is a dental practice and a dispensing chemist.

Nearest hospital emergency services are at Larbert – Forth Valley Royal Hospital.

The Kincardine Community Centre hosts health and fitness classes including yoga.

Sports and Recreation

There are several facilities available locally including:

- Tulliallan Golf club, an eighteen hole golf course with social club and public restaurant.
- Kincardine Bowling Club.
- Tulliallan Football Field & Pavilion.
- MUGA and Green Gym facilities.

Heritage

Kincardine boasts a rich heritage characterized by its historical significance and architectural landmarks including the Kincardine Bridge. The Kincardine Bridge was built between 1932 and 1936, opening to traffic on October 29, 1936. The bridge was one of the first major road bridges in Scotland and played a crucial role in the region's infrastructure development. To this day the bridge still plays a strategic role in Scotland's road network and has protected status.



The village also has deep connections to shipbuilding and to coal mining, reflecting its industrial past. Many other points of historic interest can be visited including:

- The Bordie Standing Stone.
- Blackadder Castle, built in the 13th century.
- Tulliallan Castle.
- The Mercat Cross.
- The Old Kirk and Graveyard.
- The High Pier and the sloping Ferry Pier.
- Carved marriage lintels and fire insurance number stones on older houses.

Social and Community

Kincardine is a close-knit community with strong social ties among residents. Community events, clubs, and organisations contribute to the vibrant social life of the village and include:

- Tulliallan and Kincardine Parish Church.
- Masonic Hall Lodge Tulliallan no. 598.
- Kincardine Library open part time <https://www.onfife.com/venues/kincardine-library/>
- Kincardine Senior Citizens Centre.
- Kincardine Community Centre hosts a number of services, offers hall lets and hosts: Community cinema, food hub, toddlers group, table tennis, educational and leisure activities, dance classes, yoga class, youth clubs, job clubs, and history group.



Gathering Everyone's Views

A series of community engagement events have been held in conjunction with the current Climate FORTH project.

'Climate FORTH is the current project being delivered by the Inner Forth Futures Partnership. By responding to local need and demand, it will facilitate and demonstrate the transformative action needed to transition to a climate literate ready and resilient place.'

Coalfields Regeneration Trust hosted 3 workshops using a range of tools to identify local priorities. These included:

- 3 wishes campaign that ran April to June 2024.
- A Place Standard Assessment of Kincardine using the Place Standard tool to identify the strengths and weaknesses as perceived by local residents.
- Mapping conversations around the current Fife Local Development Plan 2017 and capturing community aspirations for a better future.



I wish we had a bus to Edinburgh

I wish there were no more housing

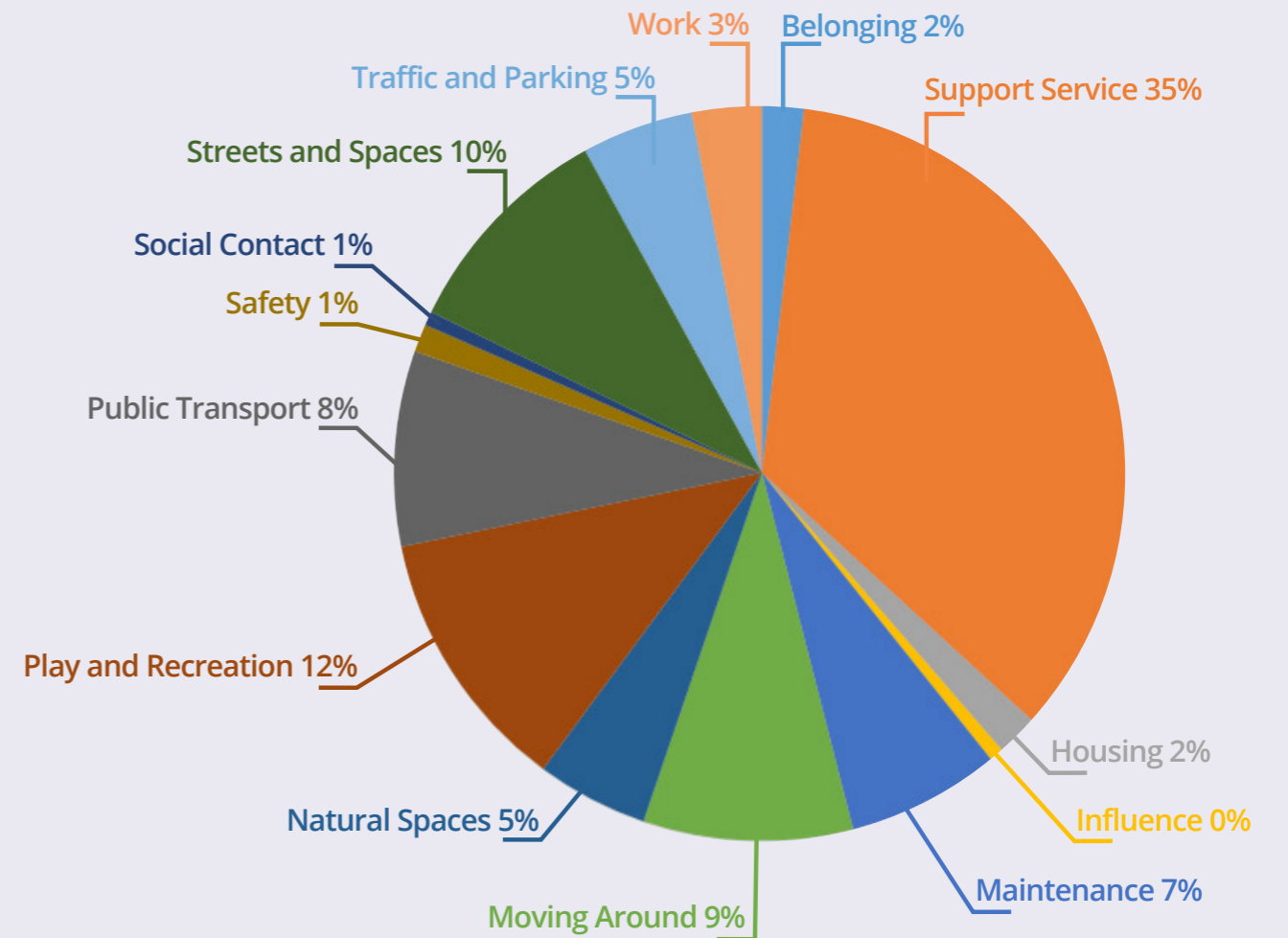
I wish we had flood defence sorted out

I wish there was preservation of and creation of more green spaces in village. More trees!

I wish we had Longannet development for new jobs

I wish there was a New Health Centre

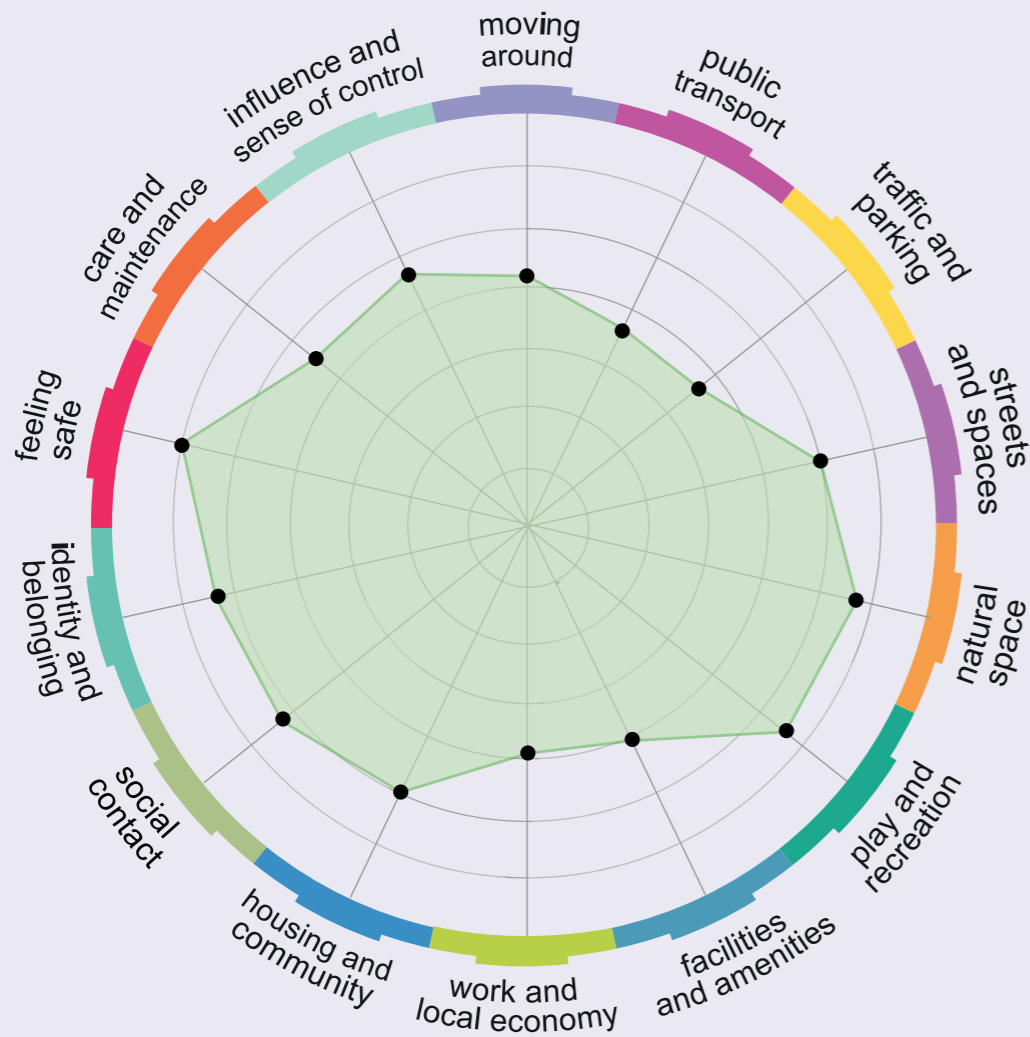
The 3 Wishes campaign highlighted the community's aspirations for improvements including, local infrastructure and amenities, health services, public transport and jobs. All the wishes are aligned with the Place & Wellbeing Outcomes.



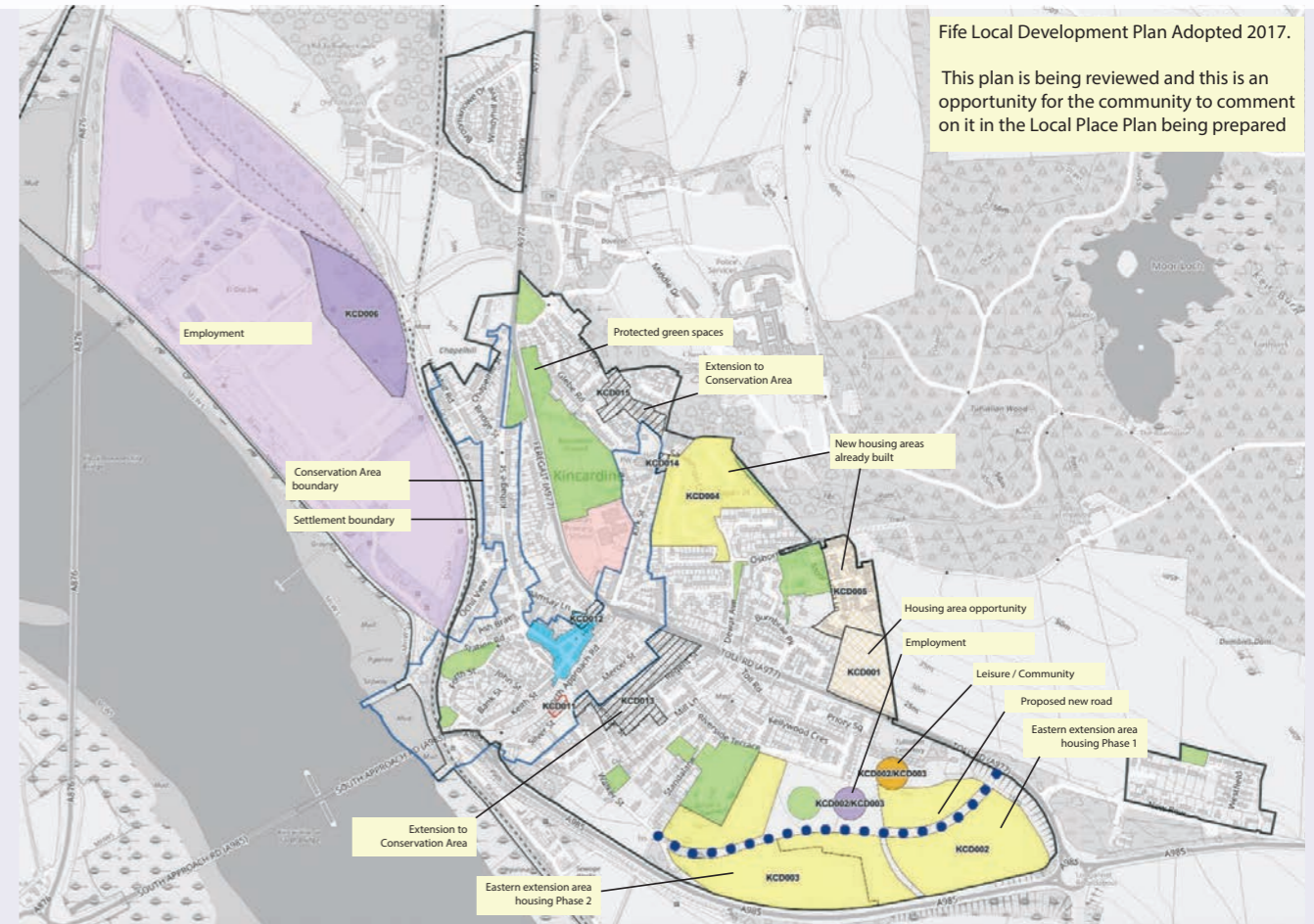
Results of the Place Standard Assessment

Community Engagement Using the Place Standard Assessment Tool

Place Standard Assessments were completed during workshops hosted in the Kincardine Community Centre in April 2024. The results were then combined with a total of 163 wishes to provide a consolidated view of community needs categorised according to 14 place standard categories identified by the Scottish Government improvement service as underpinning place and wellbeing outcomes.



The graph shows the areas of most concern to the community. This gives a good indicator of where improvements need to be made. For example this graph tells us that residents of Kincardine feel safe and enjoy good quality natural space. They have a strong sense of belonging and feel they have reasonable opportunities for getting together socially. Some of the limiting factors of living in Kincardine are existing facilities and services (e.g. the health centre), public transport and general maintenance of public spaces.



Map showing 2017 Local Development Plan – Kincardine area

Kincardine Local Place Plan

Throughout the Local Place Plan development and consultation phases regard was made to the following plans and policies:

1. Fife Local Development Plan 2017 *Local development plan (FIFEplan)* | Fife Council
2. Local Outcome Improvement Plan for Fife 2017-2027
A Plan for Fife | Our Fife - Creating a successful, confident and fairer Fife
3. <https://www.coalfields-regen.org.uk/wp-content/uploads/2019/10/Kincardine-Community-Action-Plan-2014-2019.pdf>
4. The Fourth National Planning Framework (NPF4) was consulted throughout the same period.
<https://www.gov.scot/publications/national-planning-framework-4/>
5. The Kincardine Community Charter <https://www.communitycharters.org/community-charters/>

KINCARDINE LOCAL PLACE PLAN GIVES REGARD TO NATIONAL PLANNING FRAMEWORK 4

14

“ The world is changing, and so are Scotland’s places. This strategy sets out how we will work together in the coming years to improve people’s lives by making sustainable, liveable and productive places. This will play a key role in delivering on the United Nations Sustainable Development Goals, as well as our national outcomes. We have substantially re-worked the Framework’s ‘National Spatial Strategy’, which sets out how our approach to planning and development will help achieve a net zero, sustainable Scotland by 2045.”

STATEMENT BY MINISTER FOR PUBLIC FINANCE, PLANNING AND COMMUNITY WEALTH TOM ARTHUR ON THE FOURTH NATIONAL PLANNING FRAMEWORK (NPF4) ON 8TH NOVEMBER 2022

CRT Local Place Plan Maps use icons to represent NPF4 policies

This helps fulfil a requirement of Local Place Plans to show the links between local propositions and National planning policies.

Map themes are in line with NPF4 and include Sustainable, Productive & Liveable.



15

PROPOSITIONS FOR CONSIDERATION IN THE FIFE LOCAL DEVELOPMENT PLAN

The following propositions are for consideration in the Fife Local Development Plan and relate to the icons shown on the map on pages 18 and 19.

NPF4 / 6 FORESTRY, WOODLAND AND TREES

1. Add Tulliallan Woods and Moor Loch to protected green space, this is an amendment to the Local Development Plan
2. Add the bluebell woods (NS 93038 88355) and (NS 92950 88439) to protected green space, this is an amendment to the Local Development Plan.

NPF4 / 7 HERITAGE

Improve signage of retail premises throughout the conservation area.

NPF4 / 11 GREEN ENERGY

- 1,2,3,4 Ensure all BESS sites contribute financially to the Kincardine Community Wealth fund to be set up as a financial resource for the benefit of the Kincardine community.
5. Solar Energy site (NS 94292 86030) this is an amendment to the Local Development Plan as a site reserved for energy generation.
6. Geothermal Energy site (NS 94292 86030) this is an amendment to the Local Development Plan as a site reserved for energy generation.

NPF4 / 13 SUSTAINABLE TRANSPORT – PUBLIC TRANSPORT

1. Rail Station at Hawkhill Farm.

NPF4 / 13 SUSTAINABLE TRANSPORT - WALKING

1. Multi-user path in old Kincardine power station site linked to a widened riverside path to create a circular route.
2. Provide a safe crossing of the A985 to access the woodland on the south side.

NPF4 / 16 QUALITY HOMES (ALSO NPF4 / 8, NPF4 / 18, NPF4 / 22)

All new housing should have renewable energy and water harvesting as standard. Ensure local facilities are built, in particular the new Health Centre, or improved to support the residents of the new housing developments. Developments must include adequate social housing element and a proper green buffer zone of trees and shrubs to reduce noise and pollution, this is an amendment to the Local Development Plan. Water harvesting for the housing and sustainable urban drainage (SUDS) for the site.

NPF4 / 30 TOURISM

1. Provide access to the slipway.
2. Improve the High Pier to allow boats to tie up.

NPF4 / 32 AQUACULTURE

Create opportunities for onshore aquaculture using heat from underground mine water.

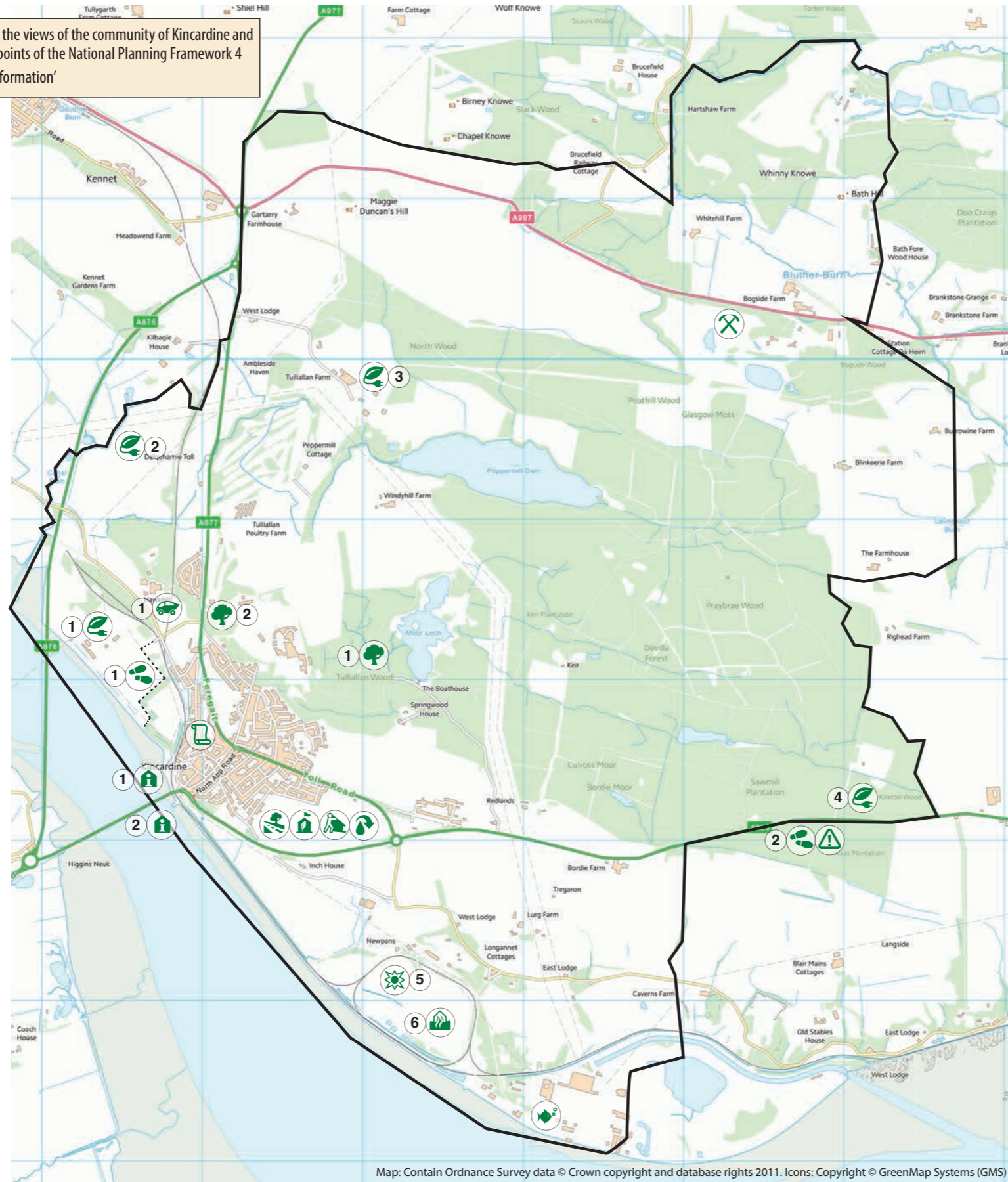
NPF4 / 33 MINERALS

Ensure that Burrowine Quarry adhere to NPF4 Policy 33 which states:

‘Communities and the environment are protected from the impacts of mineral extraction’.

How to read the icons: NPF4/2 represents NPF4 Policy 2 Climate Mitigation and Adaptation

This map represents the views of the community of Kincardine and is linked to the key points of the National Planning Framework 4 'Central Urban Transformation'



Sustainable, Liveable and Productive

NPF4 / 6 Forestry, woodland and trees

- 1. Add Tulliallan Wood and Moor Loch to protected green space, this is an amendment to the Local Development Plan
- 2. Add the bluebell woods to protected green space, this is an amendment to the Local Development Plan

NPF4 / 7 Heritage

- 1. Improve signage of retail premises throughout the conservation area

NPF4 / 11 Green Energy

- 1,2,3,4 Ensure all BESS sites contribute financially to the Kincardine Community Wealth fund
- 5. Solar Energy site

- 6. Geothermal Energy site

NPF4 / 13 Sustainable Transport

- 1. Rail Station at Hawkhill Farm, this is an amendment to the Local Development Plan
- 1. Multi user path in old Kincardine power station site linked to a widened riverside path to create a circular route
- 2. Provide a safe crossing of the A985 to access the wood land on the south side

NPF4 / 16 Quality Homes (also NPF4 8,18, 22)

- 1. All new housing should have renewable energy and water harvesting as standard.
- 2. Ensure local facilities are built or improved to support new housing developments,
- 3. Developments must include adequate social housing element and an decent green belt to reduce noise and pollution
- 4. Water harvesting for the housing and Sustainable urban drainage for the site

NPF4 / 30 Tourism

- 1. Provide access to the slipway
- 2. Improve the High Pier to allow boats to tie up

NPF4 / 32 Aquaculture

- 1. Create opportunities for onshore aquaculture using heat from underground mine water

NPF4 / 33 Minerals

- 1. Fife Silica Sands - Communities and the environment are protected from the impacts of mineral extraction

NPF4 AND THE PLAN4FIFE

Below is an outline of how the proposed community LPP propositions under their associated National Planning Framework 4 (NPF4) policies align with the Plan for Fife outcomes.

NPF4 / 6 FORESTRY, WOODLAND, AND TREES

Propositions:

1. Add Tulliallan Woods and Moor Loch to protected green space (amendment to the Local Development Plan).
2. Add the bluebell woods (NS 93038 88355) and (NS 92950 88439) to protected green space (amendment to the Local Development Plan).

Plan for Fife Outcomes Alignment:

- Thriving Places: Protecting and enhancing green spaces contributes to community well-being and biodiversity, providing recreational areas and preserving natural habitats.
- Inclusive Growth and Jobs: Enhancing green spaces can attract tourism and boost the local economy through eco-tourism and outdoor activities.
- Sustainable Communities: Protecting woodlands aligns with sustainable development goals, contributing to carbon sequestration and climate resilience.

NPF4 / 7 HERITAGE

Propositions:

- Improve signage of retail premises throughout the conservation area.

Plan for Fife Outcomes Alignment:

- Thriving Places: Improved signage enhances the visitor experience and supports local businesses, making the conservation area more navigable and attractive.
- Inclusive Growth and Jobs: Better signage can increase foot traffic to retail premises, supporting local businesses and economic growth.
- Community-led Services: Enhances community pride and heritage preservation by highlighting historical and cultural assets.

NPF4 / 11 GREEN ENERGY

Propositions:

- 1- 4. Ensure all Battery Energy Storage Systems (BESS) sites contribute to the Kincardine Community Wealth fund.
5. Solar Energy site (NS 94292 86030) (amendment to the Local Development Plan as a site reserved for energy generation).
6. Geothermal Energy site (NS 94292 86030) (amendment to the Local Development Plan as a site reserved for energy generation).

Plan for Fife Outcomes Alignment:

- Sustainable Communities: Promotes the use of renewable energy, reducing carbon footprints and enhancing energy security.
- Inclusive Growth and Jobs: Financial contributions from BESS sites can support local economic development and community projects.
- Thriving Places: Renewable energy projects can create local jobs and support sustainable development.

NPF4 / 13 SUSTAINABLE TRANSPORT

Propositions:

1. Rail Station at Hawkhill Farm (amendment to the Local Development Plan).
2. Multi-user path in old Kincardine power station site linked to a widened riverside path to create a circular route.
3. Provide a safe crossing of the A985 to access the woodland on the south side.

Plan for Fife Outcomes Alignment:

- Sustainable Communities: Improved transport links and infrastructure support sustainable travel and reduce car dependency.
- Thriving Places: Enhances accessibility and connectivity, making Kincardine more attractive to residents and visitors.
- Inclusive Growth and Jobs: Better transport links can improve access to education and employment opportunities.

NPF4 / 16 QUALITY HOMES (ALSO NPF4 / 8, NPF4 / 18, NPF4 / 22)

Propositions:

1. All new housing should have renewable energy and water harvesting as standard.
2. Ensure local facilities are built, in particular the new Health Centre, or improved to support the residents of the new housing developments.
3. Developments must include adequate social housing elements and a proper green buffer zone of trees and shrubs to reduce noise and pollution (amendment to the Local Development Plan).
4. Water harvesting for the housing and sustainable urban drainage (SUDS) for the site.

Plan for Fife Outcomes Alignment:

- Sustainable Communities: Promotes sustainable housing practices, reducing environmental impact and improving resource efficiency.
- Thriving Places: Enhances living standards and ensures adequate infra-structure and facilities to support growing communities.
- Inclusive Growth and Jobs: Ensures equitable access to housing and community facilities, supporting social cohesion and economic inclusion.

NPF4 / 30 TOURISM

Propositions:

1. Provide access to the slipway.
2. Improve the High Pier to allow boats to tie up.

Plan for Fife Outcomes Alignment:

- Thriving Places: Enhances tourism infrastructure, making Kincardine a more attractive destination for visitors.
- Inclusive Growth and Jobs: Supports local businesses and economic development through increased tourism activities.
- Sustainable Communities: Encourages sustainable tourism practices, preserving natural and built environments.

NPF4 / 32 AQUACULTURE

Propositions:

- Create opportunities for onshore aquaculture using heat from underground mine water.

Plan for Fife Outcomes Alignment:

- Sustainable Communities: Promotes innovative and sustainable use of local resources, contributing to environmental sustainability.
- Inclusive Growth and Jobs: Creates new employment opportunities and supports local economic development through aquaculture.
- Thriving Places: Diversifies the local economy and supports food security through sustainable practices.

NPF4 POLICY 33 MINERALS

Ensure that Burrowine Quarry adhere to NPF4 Policy 33 which states:

'Communities and the environment are protected from the impacts of mineral extraction'.

Plan for Fife Outcomes Alignment:

- Sustainable Communities: Promotes sustainable use of local resources, contributing to environmental sustainability.
- Thriving Places. Enhance the physical and social environment of communities.
- Inclusive Growth and Jobs. Promote economic growth that benefits all parts of society, creating job opportunities and enhancing skill levels.

Each Local Place Plan proposition aligns with the overarching goals of the Plan for Fife, fostering sustainable development, economic growth, and community well-being.

Setting out the priorities for community action

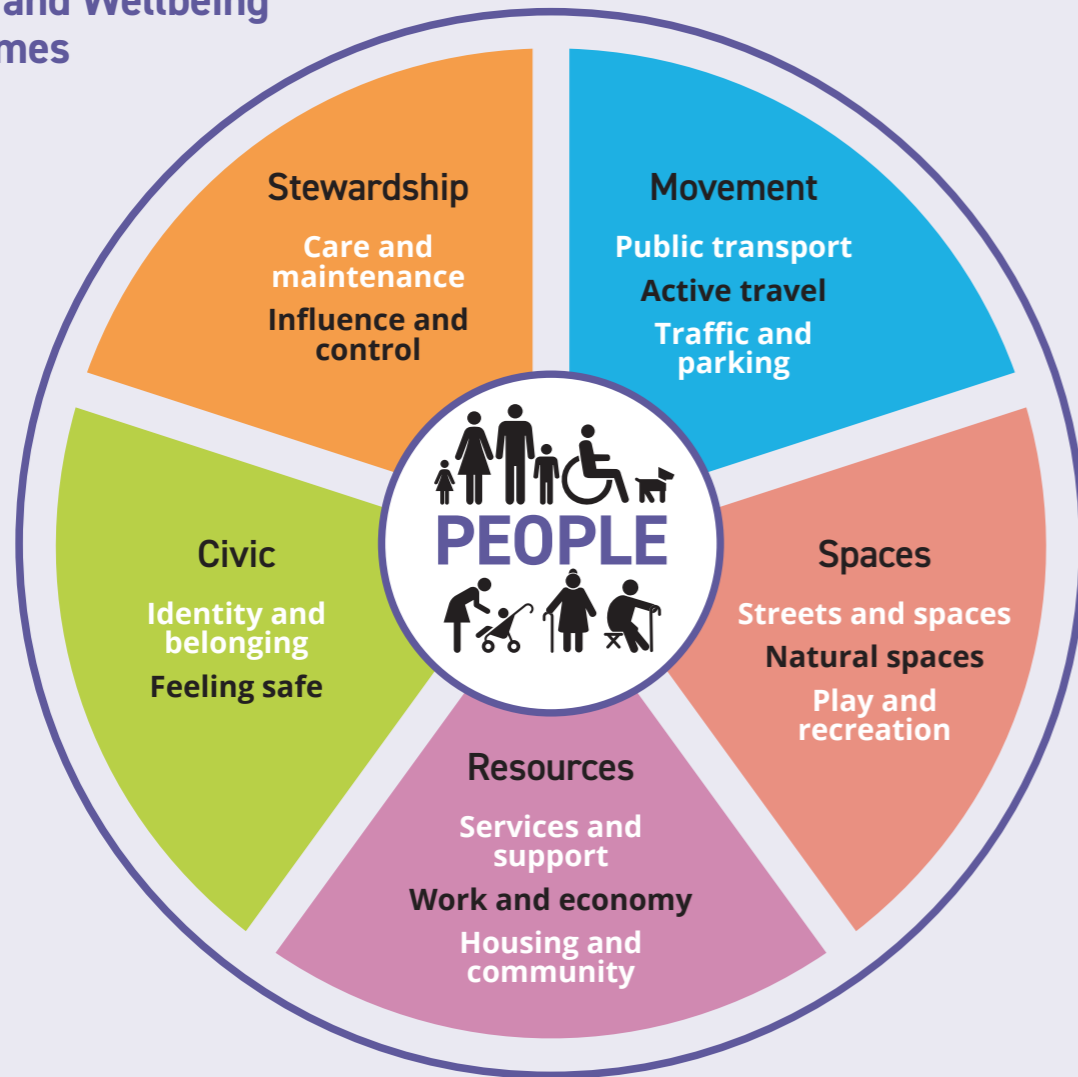
The priorities for action that have been identified are set out under the Place and Wellbeing outcomes based on the Place Standard themes.

These themes are all the characteristics of a place that allow those who live, work and relax there to thrive.

The outcomes are for all stakeholders to take collaborative action on delivering in Kincardine.

movement, spaces, resources, civic, and stewardship

Place and Wellbeing outcomes



The principles of equality, net-zero emissions and sustainability underpin all of these themes, and all themes should be embedded in policy and action.



Kincardine will flourish and prosper, with a vibrant village centre, a culture of enterprise and plenty to attract people to live, work or visit here.

We will have made the most of our rich and fascinating heritage, and the opportunities on our doorstep for enjoying the coast and the countryside.

Kincardine will have an excellent range of services and facilities to cater for all ages and sectors of our community, and there will be a responsive relationship with Fife Council and other service providers.



This theme highlights the priorities that emerged from community feedback and relate to aspects of place that include moving around, public transport and traffic and parking.

PRIORITIES

A BUS SERVICE THAT SUITS OUR NEEDS



ACTIONS AND POTENTIAL PARTNERS

Advocate for expanded bus routes to connect underserved areas and key destinations such as Stirling and Edinburgh.

Use existing Stagecoach service to Glasgow to include route that enables people to access Larbert train station to enable access to existing Stirling and Edinburgh train services.

IMPROVED TRAFFIC MANAGEMENT



Work with Fife Council Roads Department on measures to reduce traffic speed where it is most needed.

Work with Tulliallan Primary to launch a campaign to reduce reliance on cars to get to school and overall road safety issues.

Carry out a mapping exercise to identify potholes and other road repair sites. Liaise with Council to have priority repairs made.

IMPROVE INFRASTRUCTURE FOR WALKERS AND CYCLISTS



Carry out a mapping exercise to identify additional active travel routes required to encourage alternative modes of transportation.

Enhance cycling infrastructure by creating dedicated cycle paths and lanes to key destinations such as schools, shops, and the nearby Westfield village.

Organize community events such as "bike to work" days to promote the benefits of cycling and walking.

IMPROVE PARKING FACILITIES



Work with school and parents to encourage responsible parking around the school and school routes.

Improve safety of the car park at the community centre by marking out parking bays.

POTENTIAL PARTNERS

Fife Council, Primary Schools, local residents and community groups, Public Transport Provider (e.g Stagecoach), Tillicoultry Quarries.

This theme highlights the priorities that emerged from community feedback and relate to aspects of place that include streets and spaces, natural space, play and recreation.

PRIORITIES

MORE COMMUNITY GROWING SPACE



ACTIONS AND POTENTIAL PARTNERS

Carry out further community engagement to identify the level of community commitment for a centrally located community garden which could include a community orchard.

Work with Fife Council and make links with other similar local initiatives.

MAKE THE MOST OF OUR CHILDREN'S PLAY PARKS



Audit of play parks across the area and decide on priorities for improvement.

Work with the local community, Fife Council and other partners to carry out a community mapping exercise looking at green space and how it can be designed to best suit the needs of everyone and for nature.

MORE OUTDOOR AND SPORTS FACILITIES



Carry out community engagement on the theme of more outdoor and sports facilities to help identify level of need and type of facilities required.

Explore options for the creation of an outdoor adventure playground for kids that can be kept free of dog fouling.

PRESERVE AND ENHANCE OUR NATURAL ENVIRONMENT



Wider promotion of amenities, walks, built and natural heritage to encourage people to stop and visit.

MAKE THE MOST OF EXISTING GREEN SPACE



Encourage Fife Council and landowners to invest in the maintenance and accessibility of natural spaces like woodlands and riversides.

POTENTIAL PARTNERS

Fife Council, Sport Scotland, Nature Scot, local residents and community groups, Local Councillors, Climate Action Fife, Climate Forth.

This theme highlights the priorities that emerged from community feedback and relate to aspects of your place that include facilities and services, work and local economy, housing and community and social interaction.

PRIORITIES

ACTIONS AND POTENTIAL PARTNERS

MORE SOCIAL SPACES



Investigate opportunities for making the most of the Kincardine Community Cinema within the Community Centre.
 Improvement of the local library to make it more accessible for people with special needs, and open for longer hours.
 Develop the Kincardine Community Food Hub as somewhere that gives access to affordable fresh food and also where you can learn to cook and enjoy social eating that's affordable.
 Implement accessibility upgrades in public buildings and facilities to ensure equal access for all residents.

MORE ACTIVITIES FOR PEOPLE OF ALL AGES



Carry out further engagement activities to find out what activities people would like to see.
 Expand variety of clubs and activities to include coding, gaming, science, and other non-sporting interests.
 Work together to create a Directory to promote existing activities for all ages and abilities and identify gaps in provision.
 Look at ways to create activities that are accessible, both in physical and financial terms.
 Foster partnerships with groups and organisations to host multicultural events and celebrations.

REGENERATION OF VILLAGE HIGH STREET AREA



Carry out consultation activities with residents and businesses around village centre development.
 Explore local shopping ideas like Scotland Loves Local and bring local traders together to see how they can work together to improve the shopping experience for local people.

MORE AFFORDABLE HOUSING



Working with Fife Council and social housing providers to ensure that Kincardine residents can continue to live in their own community if desired.

PRIORITIES

ACTIONS AND POTENTIAL PARTNERS

MORE TRAINING OPPORTUNITIES LEADING TO WORK



Approach local colleges to find out if they can provide teaching provision to offer local trade and skills-based training opportunities.
 Maximise training opportunities locally.

ACCESS TO HEALTH SERVICES FOR EVERYONE



Lobby for the plans for the new Health and Wellbeing centre to be re-activated.
 Improve the process for making GP appointments to make it easier and more responsive to need.

E-CHARGING STATIONS LOCALLY



Work with Fife Council to identify suitable locations for e-charging stations.
 Explore funding to purchase and install charging stations.

PROMOTE OUR HERITAGE



Support initiatives to restore and maintain historical landmarks and buildings.
 Commission public art installations to celebrate our cultural identity and heritage.
 Establish a space to showcase artifacts and archival material to keep local history alive in the village.

PROMOTE SOCIAL INCLUSION



Create inclusive spaces and programs that cater for the needs of diverse community members including youth, seniors, families and people with disabilities and newcomers to the area.

POTENTIAL PARTNERS

Fife Council, Fife College, Local Businesses, Social Housing providers, local residents including young People, community groups DTAS, NHS Fife, Local Councillors, Climate Action Fife, Climate Forth.

This theme highlights the priorities that emerged from community feedback and relate to aspects of your place that include identity and belonging and feeling safe.

PRIORITIES

NO MORE BROKEN GLASS IN THE PARK



ACTIONS AND POTENTIAL PARTNERS

Work with Fife Council Environmental Services and CLD workers on the best way to tackle this issue.

IMPROVE THE LIGHTING



Work with Council to improve street lighting, especially paths and alleyways.
Identify areas that require additional / new lighting.

MAKE OUR COMMUNITY SAFER



Explore a whole community approach to anti-social behaviour and vandalism.
Identify areas that would benefit from CCTV.
Explore the feasibility of neighbourhood watch schemes.
Explore the idea of setting up regular Police / Community meetings to discuss current community issues. Work with Police Scotland to increase visible local policing in the area.
Promote youth work / organisations in the community to give young people more opportunities and places they can identify as their spaces.

SAFE ROAD CROSSINGS



Explore the need for and locations for safe road crossings.

ENCOURAGE TOURISM



Development of a restaurant/social space to meet tourist potential - Explore scope for encouraging local business.
Support existing community events that encourage tourism.

IMPROVE COMMUNITY/ FAMILY SUPPORT SERVICES



Work with partners on this based on needs identified through engagement.

POTENTIAL PARTNERS

Visit Scotland, Fife Council, Police Scotland, NHS Fife, Local Councillors, local residents, Climate Action Fife, Climate Forth and community groups.

We seek to work in partnership to make real progress and invite residents, local groups and businesses, local authority departments and outside agencies to work together with us. If you can help with any of these issues and help improve our community please get in touch with Kincardine Community Council.

This theme highlights the priorities that relate to aspects of your place that include care and maintenance as well as influence and sense of control.

PRIORITIES

CREATE A KINCARDINE COMMUNITY WEALTH FUND (KCWF) MANAGED BY AN INDEPENDENT ORGANISATION FOR THE BENEFIT OF THE COMMUNITY OF KINCARDINE



ACTIONS AND POTENTIAL PARTNERS

We want to set up a fund that can allow companies working in the area, eg Energy to pay into for the benefit of the community.
Identify a third sector organisation that will manage the KCWF on behalf of the Kincardine community.
Negotiate with Energy providers eg Battery storage companies setting up facilities locally to contribute to the KCWF. Negotiate with all other possible contributors to the KCWF.

CLEANER STREETS E.G. DOG FOULING, FLY TIPPING



Have regular campaigns to reduce dog fouling.
Investigate with Fife Council the use of mobile CCTV cameras where fly tipping is happening on a regular basis with a view to fining those responsible.

A MORE ENERGY EFFICIENT COMMUNITY CENTRE



Secure funding to implement energy saving measures in the Kincardine Community Centre:
LED lights, Double glazed windows in the big hall, New doors that seal properly.

PROMOTE WHAT IS GOING ON LOCALLY



Create a community newsletter to ensure promotion of what's happening locally to encourage social engagement.
Ensure local information regarding clubs and groups is displayed on all noticeboards.
Carry out a mapping exercise on existing noticeboards and look at locations where new ones could be installed.

MORE RECYCLING FACILITIES



Ensure bins are emptied of rubbish and dog fouling on a timely basis.

CELEBRATE, SUPPORT AND ENCOURAGE VOLUNTEERING



Continue to encourage people to participate in existing groups and activities and to volunteer to help. Recognise and celebrate peoples' contribution in the community through involvement in volunteering awards.

FLORAL ENHANCEMENTS IN KINCARDINE



Revitalise the floral enhancements and encourage more volunteers to assist with floral displays throughout the village.
Work with local Primary School to get the children involved.

ENSURE ALL MINERAL EXTRACTION SITES ADHERE TO BEST PRACTICE AND RELEVANT FIFE COUNCIL AND NPF4 POLICIES AND STRATEGIES.

Work with Fife Council to ensure that proper monitoring and enforcement of policies and practices takes place.
An outline of links between NPF4 Policy and Plan 4Fife are highlighted in more detail on Page 23.

POTENTIAL PARTNERS

Fife Council, NHS, Fife Voluntary Action, local community, Local Councillors, Primary Schools, local residents, Climate Action Fife, Climate Forth and community groups.



Credit: ©2024 Airbus, Getmappingplc, Maxar Technologies, Map data ©2024

A way forward for our local environmental Issues

The major community concerns over the negative health, environmental and social impact being experienced by local people in their daily lives who live within the area affected by Burrowine Quarry current working practices has to be addressed.

Bringing NPF4 policy 33 into play with a detailed alignment between this policy and the specific measures in Plan 4 Fife, here's how we can move forward:

NPF4 Policy 33 Overview

NPF4 Policy 33 mandates that mineral extraction operations must not harm communities or the environment.

Key aspects of this policy include:

- Minimising environmental damage.
- Reducing adverse effects on local communities.
- Ensuring sustainable practices.
- Implementing robust restoration and aftercare of sites.

Plan 4 Fife: Application of the plan to Burrowine Quarry

Plan 4 Fife should include specific measures to ensure compliance with Policy 33. Here's how Burrowine Quarry can align its operations:

1. Environmental Protection

Assessment and Monitoring:

- Conduct comprehensive Environmental Impact Assessments (EIA) before starting any extraction activities to identify potential impacts on local ecosystems, water sources, and biodiversity.
- Regularly monitor environmental parameters (air quality, water quality, noise levels) during operations to ensure they remain within acceptable limits.

Mitigation Measures:

- Implement advanced dust suppression systems to reduce air pollution.
- Use water recycling techniques to minimize water usage and prevent contamination of local water bodies.
- Establish buffer zones to protect sensitive areas and wildlife habitats from operational disturbances.

2. Community Impact Mitigation

Community Engagement:

- Establish a community liaison group to maintain open communication with local residents, address concerns, and provide updates on project developments.
- Organise public consultations to gather feedback and incorporate community suggestions into the planning and operational phases.

Impact Reduction:

- Restrict operational hours to minimize noise and disruption to local communities.
- Provide regular updates and transparent reporting on the measures taken to mitigate any negative impacts.

3. Sustainable Practices

Resource Management:

- Adopt sustainable extraction techniques that maximize resource efficiency and minimize waste.
- Utilise renewable energy sources where possible to power operations, reducing the carbon footprint.

Site Restoration:

- Develop a comprehensive restoration plan that outlines the steps to rehabilitate the site post-extraction, including soil replacement, re-vegetation, and habitat restoration.
- Ensure that the restoration process is continuous and not delayed until the end of the project, to allow for progressive rehabilitation and quicker recovery of the land.

4. Compliance and Reporting

Regulatory Compliance:

- Adhere strictly to all national and local regulations related to mineral extraction and environmental protection.
- Conduct regular internal audits and third-party inspections to ensure compliance with NPF4 Policy 33 and other relevant regulations.

Transparency

- Maintain detailed records of environmental and community impact assessments, mitigation measures, and restoration activities.
- Publish annual sustainability reports that provide stakeholders with insights into the environmental and social performance of the operations.

Conclusion

By integrating these measures into their operational framework, Burrowine Quarry can ensure adherence to NPF4 Policy 33. This alignment will protect both the environment and the local communities from the adverse impacts of mineral extraction, promoting sustainable and responsible resource management.

Regular monitoring, community engagement, and transparent reporting are key elements that will support this commitment.

MAKING THE LINKS TO THE FIFE COMMUNITY PARTNERSHIP PLAN

The Plan for Fife

Kincardine Local Place Plan and Community Action Priorities

Our Kincardine Local Place Plan and community action priorities comes from a bottom up approach. It sits together with the Plan for Fife to encourage a joined up approach to community development and improved service provision. This plan represents the views and aspirations of local people and can be used to help encourage partnership working. It promotes opportunities for local groups, public agencies and service providers to work together to improve the quality of life for the people of Kincardine.



The Plan for Fife Key Themes	Kincardine Community Action Priorities linked to Place and Wellbeing Outcomes
<p>OPPORTUNITIES FOR ALL</p> <p>Creating a level playing field where everyone has a fair chance to succeed and contribute to the economy.</p>	<p>Movement and Resources</p> <p>Well connected with path networks for active travel and public transport that serves the public need as well as appropriate services and support.</p>
<p>THRIVING PLACES</p> <p>Creating communities where residents can flourish and lead fulfilling lives across various dimensions, including social, economic, environmental, and cultural aspects.</p>	<p>Spaces and Movement</p> <p>A place with quality green and natural space for play and recreation. Well maintained roads with parking to meet community and business needs. Well Connected with path networks for active travel and public transport that serves the needs of everyone.</p>
<p>COMMUNITY LED SERVICES</p> <p>Initiatives that are driven, developed, and delivered by local communities to address specific needs or challenges within their area.</p>	<p>Civic and Stewardship</p> <p>A well maintained and cared for community where people can play an influential role in how their community's needs are met for residents of all ages and abilities, giving them a sense of ownership and belonging.</p>
<p>INCLUSIVE GROWTH AND JOBS</p> <p>Fostering economic development while ensuring that the benefits are shared equitably among all segments of society.</p>	<p>Resources</p> <p>A community that is well provided for with facilities and services to meet the needs everyone including access to local work and training opportunities to enable people to secure an independent lifestyle.</p>

We seek to work in partnership to make real progress and invite residents, local groups and businesses, local authority departments and outside agencies to work together with us. If you can help with any of these issues and help improve our community please get in touch with Kincardine Community Council.

Monitoring, Review and re-setting

The success of this Local Place Plan and Community Action Priorities depends on people in our community getting together to identify and address both the opportunities and threats the community faces.

For its part the Community Council commits itself to constantly monitoring the Plan's progress and, on an annual basis, to organise a public meeting with an agenda which provides for the reporting of progress, or lack of it, and the re-setting of priorities and targets where circumstances have changed.

Acknowledgements and thanks!

We would like to recognise the support that has been given from the following agencies and organisations who have played their part in one way or another in helping create the Kincardine Local Place Plan:

- Kincardine Community Council
- Kincardine Community Association Ltd
- Coalfields Regeneration Trust <http://crtconnect.org.uk>
- Fife Council <https://www.fife.gov.uk/>
- Improvement Services <https://www.improvementservice.org.uk/>
- Green Map System <https://www.greenmap.org/>
- Place and Wellbeing Alliance <https://www.ourplace.scot/>
- Scottish Government <https://www.gov.scot/publications/national-planning-framework-4/>

Special Thanks

We would also like to give a special thanks to Balfour Beatty for the support and contributions they have made to the community during the time they have been working on the Kincardine Bridge!

Making it Happen

To find out more information about this plan or to volunteer with any projects please contact by email to Kincardine Community Council kincardinecc.chair@gmail.com

Photo Credits : Geo Stewart and Enid Trevett

A big thank you to everyone in our local communities who helped make this Kincardine Local Place Plan possible!

Supporting Statements for Proposed Amendments to the Local Development Plan 2017: Kincardine Local Place Plan

Amendment 1: Add Tulliallan Woods and Moor Loch to Protected Green Space

Supporting Statement for Proposed Amendment to the Local Development Plan 2017

Proposal

Add Tulliallan Woods and Moor Loch to protected green space.

Introduction

This amendment proposes adding Tulliallan Woods and Moor Loch to the list of protected green spaces within Kincardine, Fife. This initiative aims to conserve the natural environment and promote biodiversity while providing recreational opportunities for the community.

Background and Context

Tulliallan Woods and Moor Loch are significant natural assets within Kincardine. These areas provide habitat for diverse wildlife and serve as important recreational spaces for residents and visitors. Protecting these green spaces will enhance the ecological health of the region and preserve its natural beauty.

Community Engagement and Support

Community engagement efforts, including surveys and public meetings, indicate strong support for the conservation of Tulliallan Woods and Moor Loch. Key points include:

- **Environmental Concerns:** Residents have expressed a desire to protect local green spaces from development.
- **Support for Recreation:** The community values these areas for walking, birdwatching, and other outdoor activities.

- **Local Endorsements:** Environmental groups and local organisations have endorsed this proposal, recognising the long-term benefits of conservation.

Justification for the Amendment

1. **Environmental Conservation:** Protecting these areas will preserve habitats for wildlife and maintain biodiversity.
2. **Recreational Value:** These green spaces provide vital recreational areas for physical activity and mental well-being.
3. **Community Health:** Enhancing green spaces contributes to the overall health and quality of life for residents.

Alignment with NPF4 Policies

- **NPF4 Policy 6:** Forestry, Woodland, and Trees: This proposal aligns with the policy's emphasis on conserving and enhancing natural woodlands and green spaces.

Technical Considerations

Environmental assessments need to be carried out to confirm the ecological value of Tulliallan Woods and Moor Loch. Future plans will include:

- **Biodiversity Studies:** Detailed studies to monitor and enhance local biodiversity.
- **Recreational Infrastructure:** Development of paths and signage to improve accessibility without disrupting the natural environment.

Conclusion

The proposed amendment to add Tulliallan Woods and Moor Loch to protected green space is vital for environmental conservation and community well-being. We urge the planning authorities to approve this amendment to safeguard these natural assets for future generations.

Amendment 2: Add the Bluebell Woods to Protected Green Space

Supporting Statement for Proposed Amendment to the Local Development Plan 2017

Proposal

Add Bluebell Woods (NS 93038 88355 and NS 92950 88439) to protected green space.

Introduction

This amendment seeks to protect Bluebell Woods by designating them as protected green spaces. This initiative supports environmental sustainability and enhances the natural beauty and biodiversity of Kincardine.

Background and Context

Bluebell Woods are known for their rich biodiversity and scenic beauty, particularly during the bluebell blooming season. These woods are valuable ecological sites that provide habitat for numerous species and offer a serene natural environment for community recreation.

Community Engagement and Support

Extensive community engagement has shown widespread support for protecting Bluebell Woods. Key findings include:

- **Ecological Importance:** Residents recognise the woods as important habitats for wildlife.
- **Aesthetic Value:** The community appreciates the natural beauty and seasonal appeal of the bluebell blooms.
- **Recreational Use:** The woods are popular for walking, photography, and nature observation.

Justification for the Amendment

1. **Biodiversity Protection:** Designating Bluebell Woods as protected spaces will preserve their rich biodiversity.
2. **Aesthetic and Recreational Benefits:** Protecting these woods ensures they remain accessible and

enjoyable for recreational purposes.

3. **Community and Environmental Health:** Enhanced green spaces contribute to both ecological health and community well-being.

Alignment with NPF4 Policies

- **NPF4 Policy 6:** Forestry, Woodland, and Trees: This proposal supports the conservation and enhancement of woodlands, contributing to biodiversity and ecological balance.

Technical Considerations

Preliminary studies highlight the ecological significance of Bluebell Woods. Future technical considerations include:

- **Ecological Surveys:** Regular surveys to monitor and protect local species.
- **Path Development:** Creation of paths to balance public access with conservation needs.

Conclusion

Adding Bluebell Woods to protected green spaces is crucial for preserving biodiversity and enhancing the quality of life in Kincardine. This amendment aligns with national policies on forestry and green spaces, supporting both environmental sustainability and community enjoyment.

Amendment 3: Solar Energy Site (NS 94292 86030)

Supporting Statement for Proposed Amendment to the Local Development Plan 2017

Proposal

Designate Solar Energy Site (NS 94292 86030) for energy generation.

Introduction

This amendment proposes designating a site for solar energy generation to support renewable energy initiatives in Kincardine, Fife. This aligns with national goals for reducing carbon emissions and promoting sustainable energy sources.

Background and Context

The proposed site for solar energy generation is strategically located to optimise solar exposure and integrate with existing energy infrastructure. Transitioning to renewable energy sources is essential for meeting climate goals and reducing the community's carbon footprint.

Community Engagement and Support

Community consultations have shown strong support for renewable energy projects. Key points include:

- **Environmental Impact:** Residents are aware of the positive environmental impact of solar energy.
- **Economic Benefits:** There is support for the potential economic benefits, including job creation and local investment.
- **Energy Independence:** The community values the move towards greater energy self-sufficiency.

Justification for the Amendment

1. **Renewable Energy Transition:** This site will contribute to national and local renewable energy targets.
2. **Environmental Benefits:** Solar energy reduces greenhouse gas emissions and supports sustainable development.

3. **Economic Advantages:** The project can generate economic opportunities and provide financial benefits to the local community.

Alignment with NPF4 Policies

- **NPF4 Policy 11: Green Energy:** This proposal supports the policy's goals of increasing renewable energy capacity and reducing carbon emissions.

Technical Considerations

Technical assessments need to be carried out to confirm the site's suitability for solar energy generation.

Key considerations include

- **Solar Potential:** Analysis of solar irradiance to ensure optimal energy production.
- **Grid Integration:** Plans for connecting the solar facility to the local power grid efficiently.
- **Environmental Impact:** Environmental impact assessments to mitigate any potential negative effects on the local ecosystem.

Conclusion

Designating the site for solar energy generation is a forward-thinking step towards sustainable energy in Kincardine. This amendment aligns with NPF4 policies and supports environmental, economic, and community benefits. Approval of this amendment will contribute to a greener and more resilient future.

Amendment 4: Geothermal Energy Site (NS 94292 86030)

Supporting Statement for Proposed Amendment to the Local Development Plan 2017

Proposal

Designate Geothermal Energy Site (NS 94292 86030) for energy generation.

Introduction

This amendment proposes the designation of a site for geothermal energy generation in Kincardine, contributing to renewable energy initiatives and sustainable development goals.

Background and Context

Geothermal energy harnesses the heat from the earth's subsurface, offering a reliable and sustainable energy source. The proposed site is well suited for geothermal energy production, leveraging local geological conditions.

Community Engagement and Support

Community feedback has indicated strong support for innovative renewable energy projects. Highlights include:

- **Environmental Sustainability:** Residents support the use of sustainable energy sources to reduce environmental impact.
- **Energy Security:** The community values the potential for reliable, continuous energy supply from geothermal sources.
- **Economic Opportunities:** There is enthusiasm for the economic benefits, including potential job creation and investment in local infrastructure.

Justification for the Amendment

1. **Sustainable Energy:** Geothermal energy is a low-emission, sustainable energy source that aligns with climate goals.
2. **Reliability:** Geothermal energy provides a stable and continuous energy supply, enhancing energy security.
3. **Economic Growth:** The project can stimulate local economic growth through job creation and infrastructure development.

Alignment with NPF4 Policies

- **NPF4 Policy 11: Green Energy:** This amendment supports the policy's emphasis on increasing renewable energy capacity and reducing dependency on fossil fuels.

Technical Considerations

Preliminary assessments confirm the feasibility of geothermal energy generation at the proposed site. Key technical considerations include:

- **Geological Surveys:** Detailed surveys to assess geothermal potential and resource sustainability.
- **Environmental Impact:** Comprehensive impact assessments to ensure minimal disruption to the local environment.
- **Infrastructure Development:** Plans for integrating geothermal energy systems with existing infrastructure.

Conclusion

Designating the site for geothermal energy generation supports Kincardine's move towards sustainable and reliable energy solutions. This amendment aligns with national and local energy policies, providing significant environmental and economic benefits. We recommend approval of this amendment to advance renewable energy development in the community.

These supporting statements provide a comprehensive justification for each proposed amendment, demonstrating alignment with NPF4 policies and emphasising the benefits for the Kincardine community.

MAKING IT HAPPEN

To find out more information about this plan or to volunteer with any projects please contact by email Kincardine Community Council: kincardinecc.chair@gmail.com

A big thank you to everyone in our local communities who helped make this Kincardine Local Place Plan possible.



Design: Arken Creative
LPP Maps: Colour & Light Ltd.
Print: Armstrong Printing (Alloa) Ltd.
Photography: Geo Stewart | Andy Willo | Enid Trevett



**Coalfields
Regeneration
Trust**

BUILDING PROSPERITY & OPPORTUNITY

The Coalfields Regeneration Trust
Registered Charity No.1074930 in England and Wales
A Charity Registered in Scotland No SCO39277



For a PDF version
of this Local Place
Plan and for further
information visit

www.crtconnect.org.uk