

Temporary Road Closure

WHERE ? C36, Saline (Jct. B913 to Jct. A977).

The alternative route for through traffic is via B913, A977, A907, B913.

Access for emergency service vehicles and residents will be maintained.

Pedestrian access will be maintained.

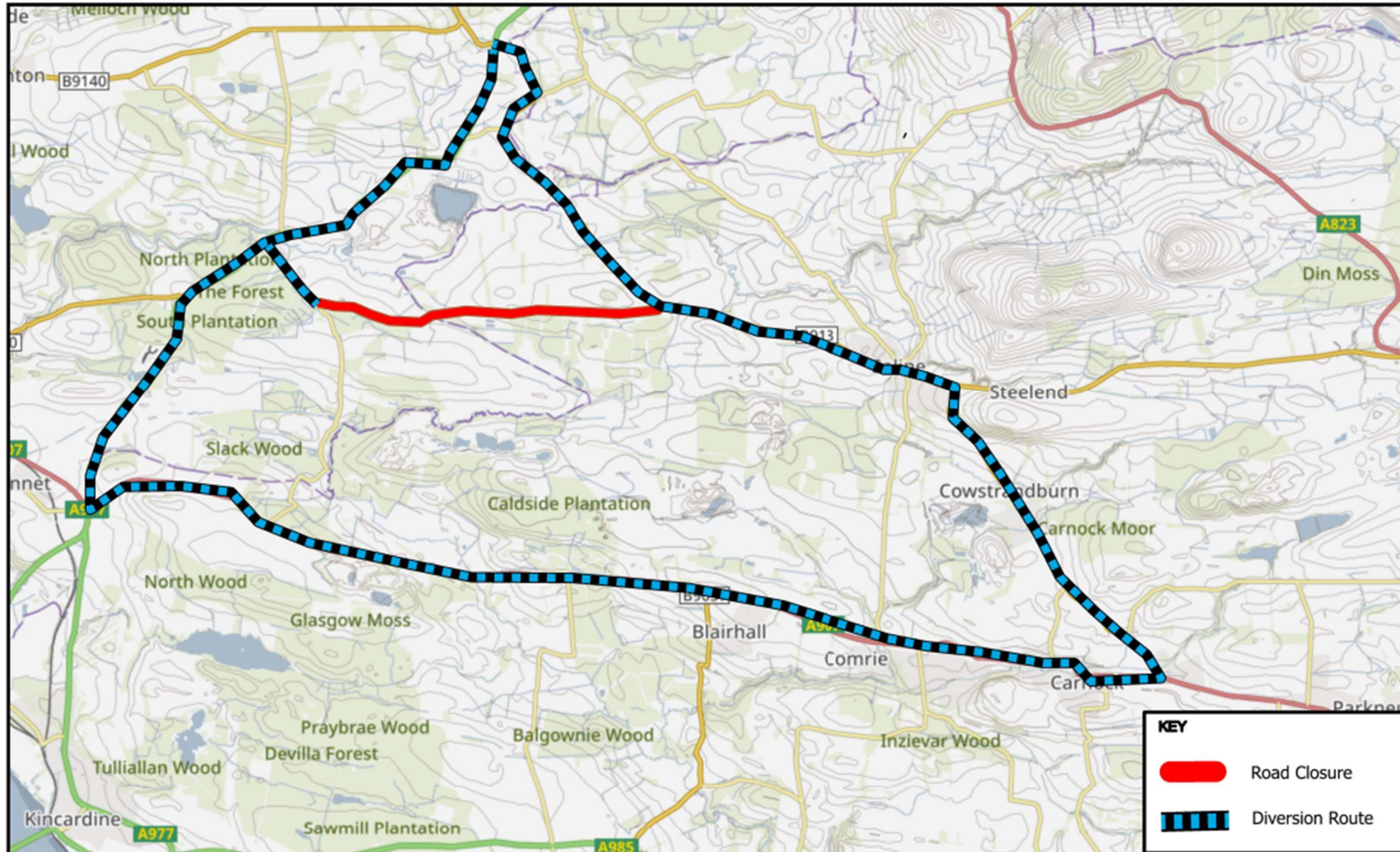
WHEN ? From 8am to 5pm Tuesday 26th November 2024.



WHY ? To allow BT pole instalation works to be carried out in safety.

WHO ? Circet UK are responsible for these works and can be contacted as follows:


Emergency/Out of Hours: 07834543556





KEY	
	Road Closure
	Diversion Route

© Crown copyright and database rights 2024.
 Ordnance Survey 100023385
 Aerial Photography © copyright Getmapping.

N

 Scale: 1:55,000

C36, Oakley
 Prepared By: NDD
 Service: Roads & Transportation

