

Temporary Road Closure

WHERE ? Harbour Drive, Dalgety Bay (from its junction with Parklands Crescent to Harbour Way Roundabout).

The alternative route for through traffic is via Link Road, Moray Way, Western Access Road & Harbour Way.

Access for emergency service vehicles will be maintained.

Pedestrian access will be maintained.

WHEN ? From 9am on Monday 17th March 2025 to 23.59pm on Tuesday 18th March 2025.

WHY ? To allow ironwork repair works to be carried out in safety.

WHO ? Contraflow are responsible for these works and can be contacted as follows:

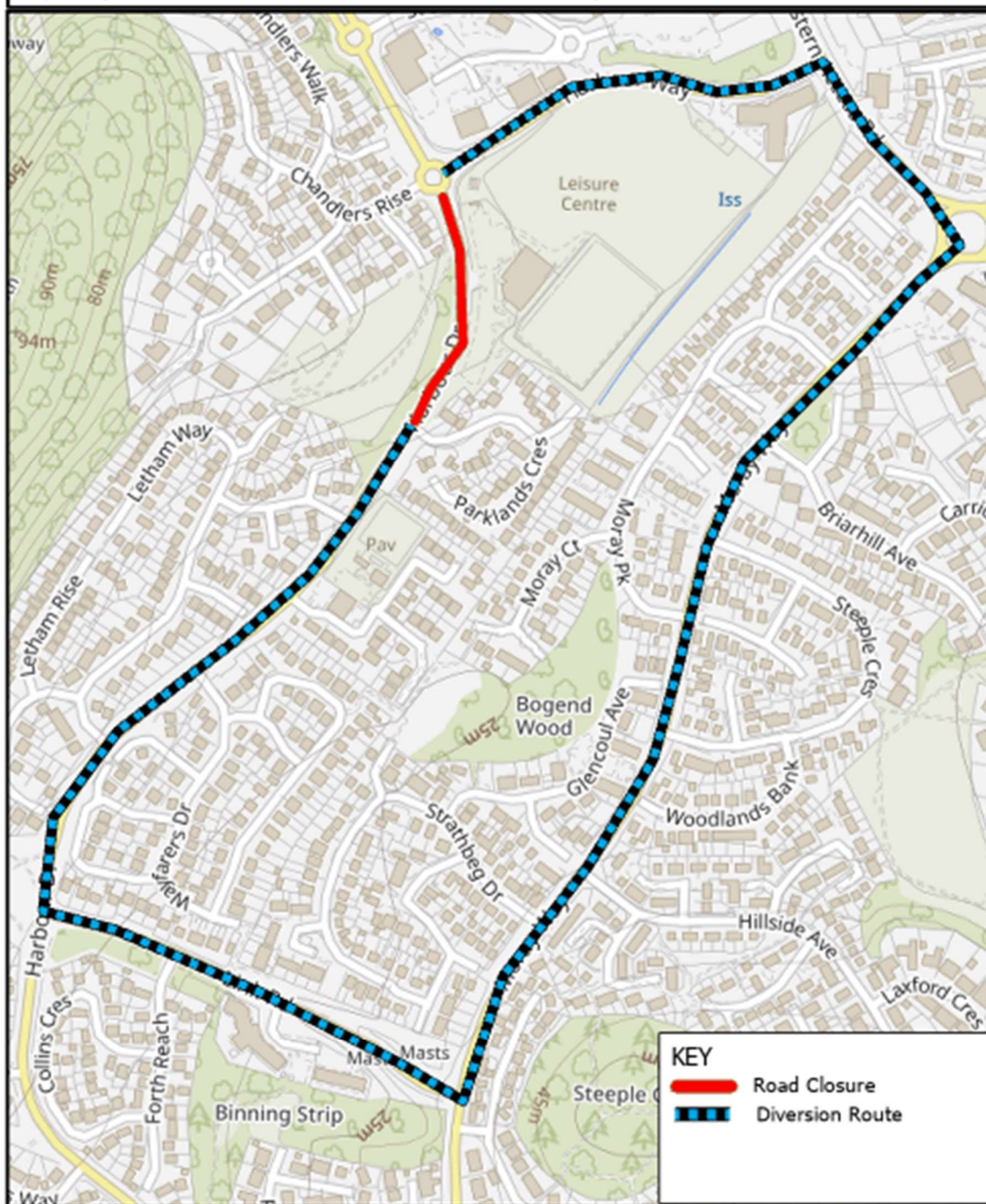
Project Engineer: 01236 862 400



Harbour Drive, Dalgety Bay

Prepared By: NDD

Service: Roads & Transportation



© Crown copyright and database rights 2025.
Ordnance Survey 100023385
Aerial Photography © copyright Getmapping.

Scale 1:4,300

Fife
COUNCIL